

FACTS & FIGURES 2026



Copenhagen Business School (CBS) is a globally recognised business school with deep roots in the Nordic socio-economic model.

At CBS, we transform society with business. Our extensive research and diverse range of programmes empower professionals and leaders in the private as well as the public sector.

In our CBS community in Frederiksberg, you will find an architecturally distinctive university campus open to the public and closely connected to the centre of Copenhagen.

CBS' global profile is a privilege and a responsibility. We provide students, graduates and business leaders with knowledge as well as transformative capabilities for a better future.

We work closely with partners across society – and societies – to engage ourselves in the opportunities and challenges facing businesses and communities.

In 2026, we focus on advancing knowledge and solutions within AI and digitalisation, geopolitics and business security as well as opportunities for lifelong learning.

We hope that this short overview will get you acquainted with – and perhaps update you on – our unique university.

We transform society with business	6
Developing Geopolitics and Business Security	8
Accelerating AI and Digitalisation	12
Creating the Educational Landscape for the Future	16
Green transition	20
Innovation and entrepreneurship	22
Organisation	26
CBS in totals	28
Research	30
Research highlights	32
Departments	34
Rankings	36
Education	40
Students	42
Continuing education	54
Internationalisation	56
Financial highlights	60
International recognition	62
Career partnerships	64
Our campus	66
Library	68
Campus map	70

We transform society with business

We are delivering our strategy across two categories:

Strategic initiatives

- Developing Geopolitics and Business Security
- Accelerating AI and Digitalisation
- Creating the Educational Landscape for the Future

Strategic activities

- Nordic Nine (Capabilities for a Positive Future)
- Green Transition
- Responsible Leadership

We draw on our Nordic heritage to take responsibility for driving societal change and create opportunities for transformation through self-reflection and engagement in a diverse learning community.

Our faculty has earned a global reputation for high-quality disciplinary and interdisciplinary research and education, which carries the obligation to address grand societal challenges in our research and to develop the transformative capabilities of students, graduates and business leaders.

Read more about selected strategic initiatives and activities on the following pages.

DEVELOPING GEOPOLITICS AND BUSINESS SECURITY

Research-based knowledge in an unpredictable world

Increasing geopolitical tensions are challenging our society. Wars, sanctions, trade barriers and hybrid threats are disrupting supply chains, markets and decision-making. Companies face a reality where security and resilience have become business-critical.

Through the Geopolitics and Business Security initiative, CBS connects researchers, business and public stakeholders to understand and address today's geopolitical risks. By turning research into dialogue and collaboration, this initiative helps leaders and organisations navigate and find solutions in an increasingly complex and uncertain world.

Business and leadership in the shadow of geopolitical tensions

Geopolitics and business security are no longer confined to foreign and defence policy.



They have become part of everyday life for Danish companies, and today the business community plays a central role in Denmark's security, resilience and geopolitical position.

If Denmark is to remain strong in a more uncertain world, this requires new knowledge and new forms of collaboration. Together with companies and public authorities, CBS aims to contribute with research-based knowledge, education and tools that strengthen competitiveness, resilience and societal security.

DEVELOPING GEOPOLITICS AND BUSINESS SECURITY

“It is becoming increasingly clear that if we are to safeguard the security and prosperity of Denmark and Europe, a broad effort is required. One in which not only public authorities, but also civil society and businesses, play important roles. Danish companies are affected by geopolitical uncertainty and hybrid threats. Today, geo and security policy is no longer something that concerns only states. It concerns all of us, and we must work together to find knowledge-based solutions”

Anja Dalgaard-Nielsen

Vice Dean for Geopolitics and Business Security



As Vice Dean for Geopolitics and Business Security, professor Anja Dalgaard-Nielsen is responsible for bringing together and strengthening CBS' academic environments in the field. She leads the effort to mobilise CBS' expertise in collaboration with companies, public authorities and society at large.

She holds a PhD from the Johns Hopkins School of Advanced International Studies and has previously held senior positions in the Danish Defence Intelligence Service and the Danish Security and Intelligence Service.

Get in touch with us at geosek@cbs.dk

ACCELERATING AI AND DIGITALISATION

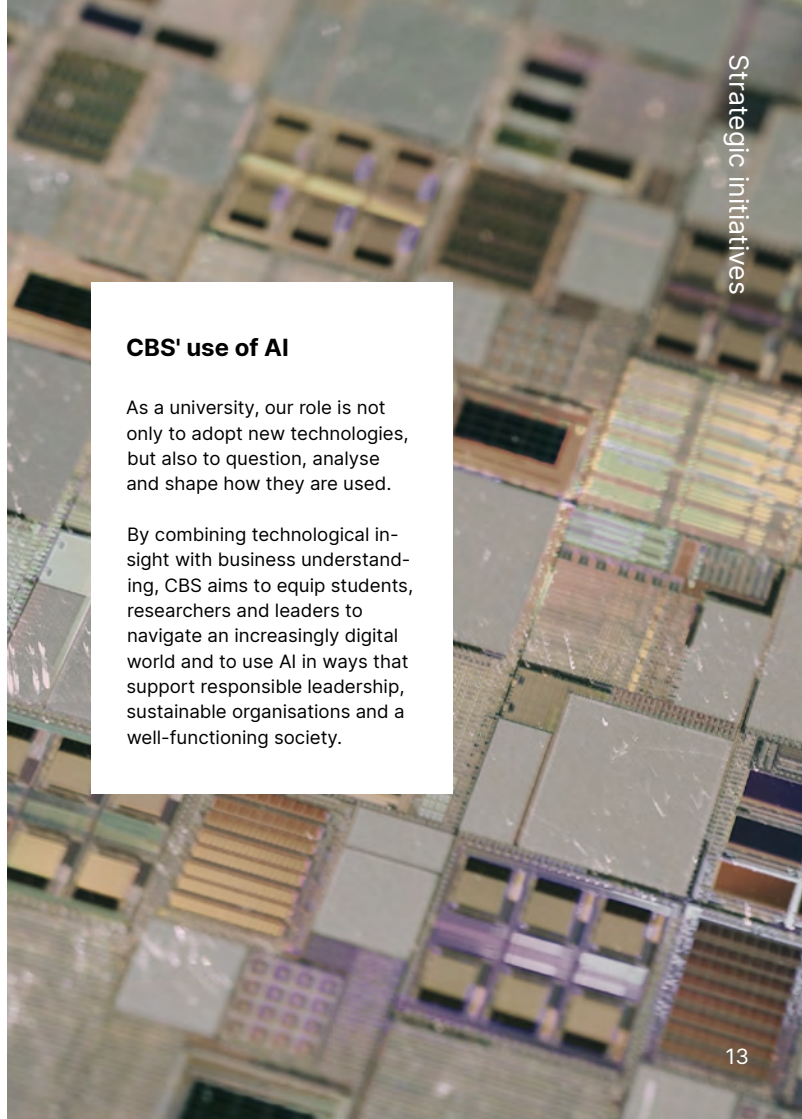
Digitalisation and artificial intelligence are transforming industries, redefining work and reshaping how organisations operate and compete

These technologies create new opportunities for innovation, productivity and value creation, while also raising important questions about governance, responsibility and the future of work.

At CBS, we seek to understand how AI technologies and digitalisation transform businesses, organisations and society.

Through interdisciplinary research and close collaboration with companies and public institutions, we generate knowledge about how digital technologies can be developed and applied responsibly and strategically.

At the same time, we examine the broader societal implications, risks and ethical dilemmas that follow in the wake of rapid technological change.



CBS' use of AI

As a university, our role is not only to adopt new technologies, but also to question, analyse and shape how they are used.

By combining technological insight with business understanding, CBS aims to equip students, researchers and leaders to navigate an increasingly digital world and to use AI in ways that support responsible leadership, sustainable organisations and a well-functioning society.

ACCELERATING AI AND DIGITALISATION

CBS is committed to exploring the potential of AI and digitalisation across learning, research and organisational development.

This includes integrating AI competences and critical technological understanding into education, enhancing research into the opportunities and risks of AI in business and society and applying digital technologies to enhance the way CBS operates.



“Artificial intelligence will change how businesses compete, organise and make decisions. But technology alone does not determine the future. At CBS, our responsibility is to ensure that the leaders and organisations shaping that future understand both the possibilities and the consequences of AI”

Peter Møllgaard
President, CBS

CREATING THE EDUCATIONAL LANDSCAPE FOR THE FUTURE

“Continuously developing our programme portfolio is essential. Development of new master programme formats is an opportunity to rethink flexibility and alignment with CBS’ strategy – always with the highest academic standards ensuring that all programmes, regardless of format are of the highest quality. These changes will strengthen our collaboration with businesses and inspire more students to embrace lifelong learning”

Anna Thomasson,
Dean of Education, CBS

Education is a lifelong journey. Continuously developing our programme portfolio is essential

Developing our programme portfolio it is an opportunity to rethink flexibility – always with the highest academic standards ensuring that all programmes, regardless of format, are of the highest quality and relevance. Our future educational landscape will strengthen our collaboration with businesses and inspire to embrace lifelong learning.

CBS is also committed to providing flexible learning opportunities that enable professionals to upskill, specialise and reflect throughout their careers. With shorter programme formats and part-time options, CBS is transforming into a lifelong companion for students and alumni.

Lifelong learning at CBS focuses on three areas

1. Employability
2. Personal development
3. Active citizenship

CREATING THE EDUCATIONAL LANDSCAPE FOR THE FUTURE



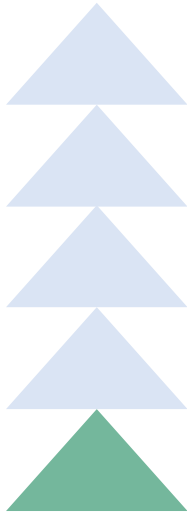
The new pathways introduced through the master programme reform enable graduates to build on their expertise in a flexible way, strengthening opportunities for lifelong learning

A lifelong relationship with CBS

We want you to stay connected to CBS – not just while you study, but throughout your career. That is why we invite you to keep updating your knowledge and skills with us. At the same time, we encourage you to drive social and organisational innovation and take shared responsibility for solving the challenges society faces. Together, we can shape tomorrow's sustainable and democratic communities.

Through our dynamic and multifaceted learning community we want to equip new generations of learners with the skills needed to balance economic and sustainable goals. This means fulfilling the UN Sustainable Development Goals and contributing to a more just and equal society.

GREEN TRANSITION



1 in 5 master theses at CBS address sustainability challenges and responsible business

9 

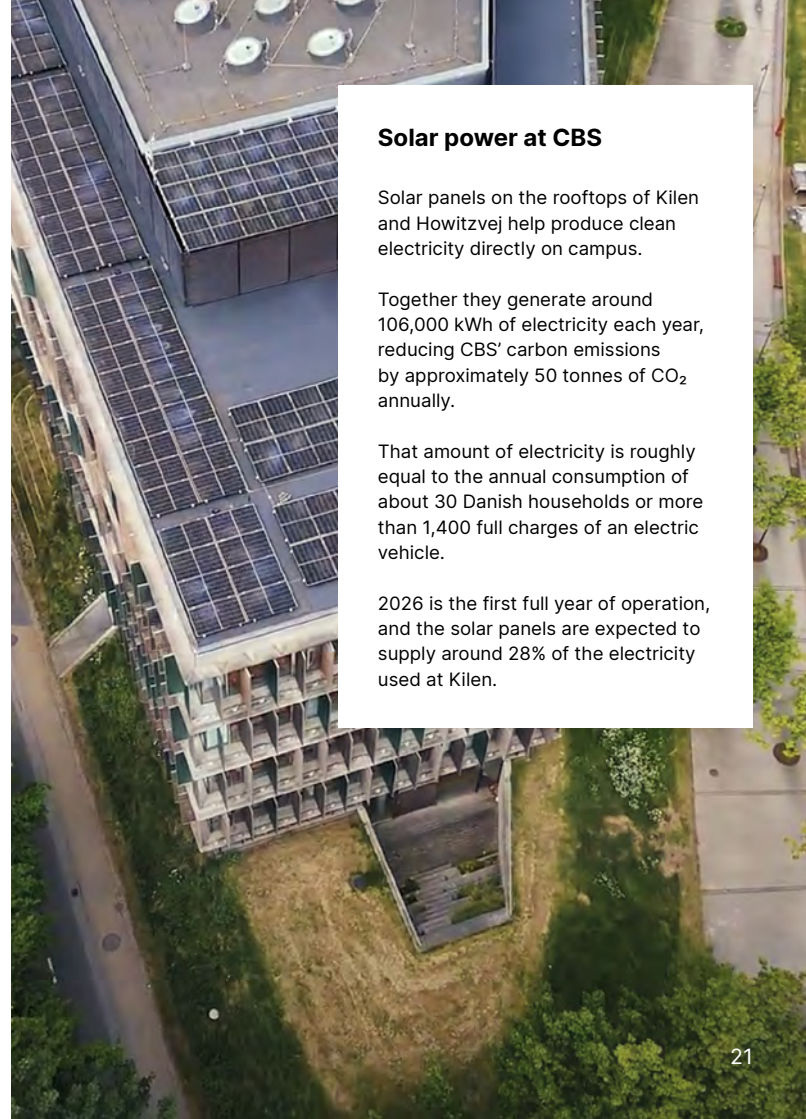
Ranked no. 9 out of 50 in the Case Centre Impact Index 2025

1/6 

1 in 6 publications at CBS relates to sustainability

85 

85 published real world cases brings a Nordic approach to leadership and sustainable business into the classroom



Solar power at CBS

Solar panels on the rooftops of Kilen and Howitzvej help produce clean electricity directly on campus.

Together they generate around 106,000 kWh of electricity each year, reducing CBS' carbon emissions by approximately 50 tonnes of CO₂ annually.

That amount of electricity is roughly equal to the annual consumption of about 30 Danish households or more than 1,400 full charges of an electric vehicle.

2026 is the first full year of operation, and the solar panels are expected to supply around 28% of the electricity used at Kilen.

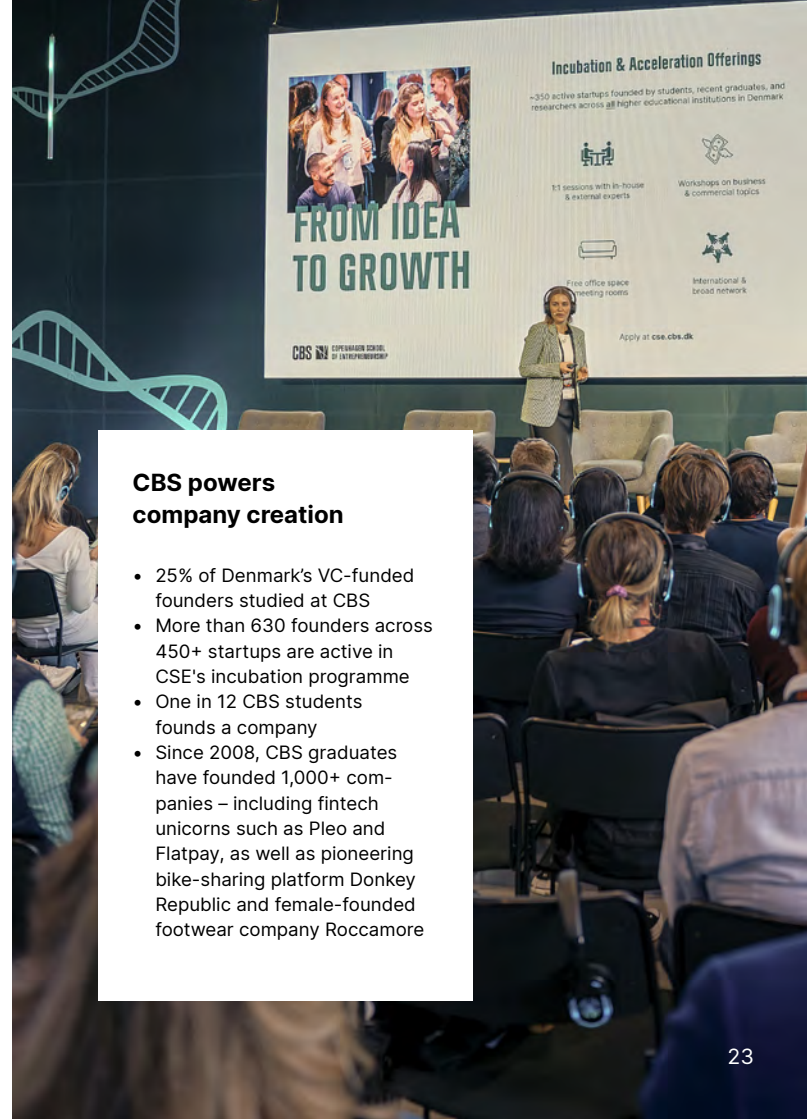
INNOVATION AND ENTREPRENEURSHIP

CBS plays an active role in boosting innovation and entrepreneurship in Denmark. Universities are central to building long-term innovation capacity by developing talent, applying research and enabling new ventures.

Through Copenhagen School of Entrepreneurship (CSE), CBS creates a platform where students, researchers and entrepreneurs can test ideas, build capabilities and develop ventures in close collaboration with the startup ecosystem.

As a business university, CBS focuses on how ideas are turned into companies. This includes developing business models, understanding markets and scaling organisations and entrepreneurial leadership. In this way, CBS complements technical and scientific environments and helps translate knowledge into practice.

Together, this strengthens founder pipelines, advances research-based innovation and contributes to a more robust and connected innovation ecosystem.



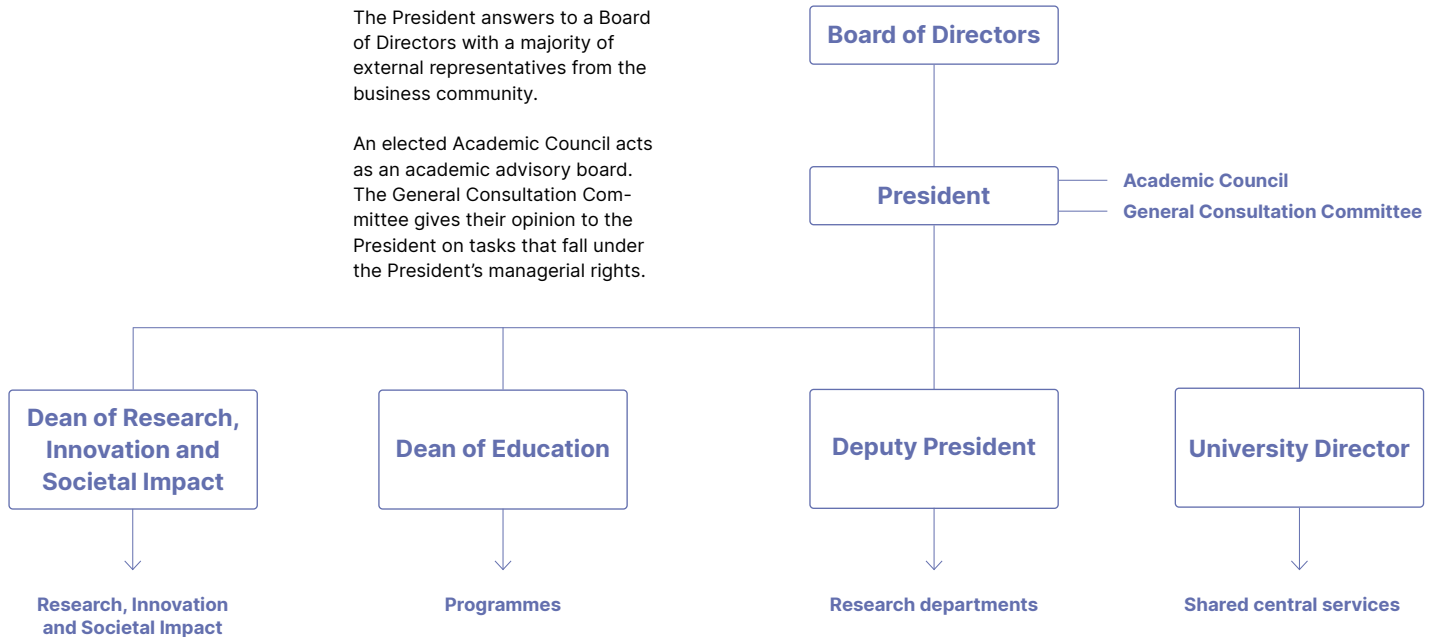
CBS powers company creation

- 25% of Denmark's VC-funded founders studied at CBS
- More than 630 founders across 450+ startups are active in CSE's incubation programme
- One in 12 CBS students founds a company
- Since 2008, CBS graduates have founded 1,000+ companies – including fintech unicorns such as Pleo and Flatpay, as well as pioneering bike-sharing platform Donkey Republic and female-founded footwear company Roccamoro



The President answers to a Board of Directors with a majority of external representatives from the business community.

An elected Academic Council acts as an academic advisory board. The General Consultation Committee gives their opinion to the President on tasks that fall under the President's managerial rights.



CBS' core activities (education and research) are organised under two deans: The Dean of Research, Innovation and Societal Impact has the strategic responsibility for CBS' research. The Dean of Education is responsible for all bachelor and master programmes, MBA and diploma programmes.

The Deputy President has the direct managerial responsibility of CBS' research departments and heads of department, i.e. all permanent and part-time faculty. The University Director has the overall responsibility of CBS' finances and the managerial responsibility of all cross-functional administrative units and the CBS Library.

CBS IN TOTALS

Students

21,062

Students in total

4,317

International students

PhD students

Headcount

157 PhD students

Departments

11

Staff

Full-time equivalent (FTE)

669 Full-time academic staff

193 Part-time academic staff

767 Administrative staff

Total income

240.14 million €

Programmes

Full-time bachelor programmes

15

Full-time master programmes

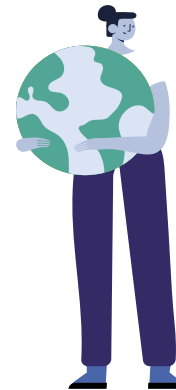
29

Diploma programmes

9

Executive master programmes

7



294

Exchange and cooperation agreements worldwide

Research



Responding to societal challenges

CBS provides research-based solutions to society's grand challenges. We constantly strive to increase the impact of our research in the academic world and through the knowledge we generate for society.

Research at CBS is organised in 11 departments dedicated to research areas and disciplines within business and social sciences. The departments deliver research-based teaching to CBS' various programmes and are home to research centres and research environments, some of which work across departments.

Excellent research

CBS delivers excellent research with high relevance for society and industry. This can be seen from the large amount of external funding that CBS attracts to research projects. In 2025, CBS received €26.88 million in external grants from public and private funds, national as well as international.

Advancing inclusive entrepreneurship in Denmark and beyond

This research group anchored at the Mærsk Mc-Kinney Møller Endowed Chair in Entrepreneurship brings together interdisciplinary insights to understand how entrepreneurship can become more inclusive and unlock untapped potential in society. It explores the barriers and opportunities shaping entrepreneurial activity across different stages of the venture lifecycle. By combining large-scale international data with in-depth studies of the Danish context and close collaboration with ecosystem partners, the project generates new knowledge on access to opportunities, firm growth and policy design – contributing to innovation, social mobility and sustainable economic development.

Consumer behaviour insights for sustainable transitions

CBS research explores how consumer behaviour shapes markets and societal change, including within The Consumer and Behavioural Insights Group at the Centre for Sustainability. Drawing on behavioural economics, researchers examine how preferences, norms and social influence drive decisions – including when and how sustainable behaviours spread between individuals. These insights support the transition towards more sustainable consumption patterns.

Driving sustainable transformation in the maritime industry

CBS Maritime brings together interdisciplinary research to address how the maritime industry can achieve economic and societal progress. By bridging core business disciplines with broader societal perspectives and collaborating closely with industry partners, CBS Maritime contributes new knowledge on regulation, innovation and sustainable transformation in global shipping as well as on security, geopolitics and industry competitiveness.

DEPARTMENTS

Accounting (ACC)

Business Humanities and Law (BHL)

Digitalization (DIGI)

Economics (ECON)

Finance (FI)

**International Economics, Government
and Business (EGB)**

Management, Society and Communication (MSC)

Marketing (MARKTG)

Operations Management (OM)

Organization (IOA)

Strategy and Innovation (SI)



RANKINGS

Rankings are viewed as indicators of how the quality of CBS' research is recognised internationally.

CBS is ranked highest in the Nordic countries by QS within Business and Management Studies, Social Sciences and Management and Accounting & Finance.

When it comes to Business & Management Studies, CBS is ranked 8th in Europe and within the overall category of Social Sciences & Management in Europe, CBS is ranked 17th.

In a Financial Times ranking from 2025, CBS ranked 24th out of the world's top 100 business schools for the societal impact of research.

**CBS'
placement**

QS Social Sciences and Management 2025	51	+20
---	----	-----

ShanghaiRanking Global Ranking of Academic Subjects 2025

Business Administration	1	+0
Management	6	-1
Finance	19	+7
Library & Information Science	32	-21
Hospitality & Tourism Management	51-75	
Economics	76-100	
Public Administration	76-100	

Financial Times Research Insights Ranking 2025: measuring impact	24	-2
---	----	----

Financial Times Europe's Leading Start-up Hubs Ranking 2025	84	
--	----	--

OPEN DAY

for master programmes

CBS



OPEN DAY

5 February
10:00–14:00
Solbjerg Plads 3

for master programmes

OPEN DAY

for master programmes

MS in Economics and Business Administration
Finance and Strategic Management

General Management and Analytics

Healthcare

International

Leadership

Leadership in Business
Strategic Management
International Business and Strategy

Education

CBS offers a comprehensive range of university degrees in economics and business administration. Other programmes combine business studies with social sciences and the humanities, offering education in the fields of IT, philosophy, politics, sociology, law, communication etc.

We offer a broad selection of full-time programmes at three levels:

- 3-year bachelor programmes
- 2-year full-time master programmes including part-time master programmes (erhvervskandidat)
- 3-year PhD programmes

Furthermore, we offer continuing education, part-time as well as full-time:

- MBA programmes
- Executive master programmes
- Diploma programmes (HD)

CBS' faculty also teach a diverse catalogue of executive non-degree programmes for leaders, board leaders and organisations at the CBS Executive Foundation.

3-year PhD degree

Continuing education

2-year MSc degree
120 ECTS

4-year part-time MSc degree
120 ECTS

3-year BSc degree
180 - 240 ECTS

STUDENTS

Total number of students

21,062

Enrolment

2,546 Bachelor students

3,444 Master students

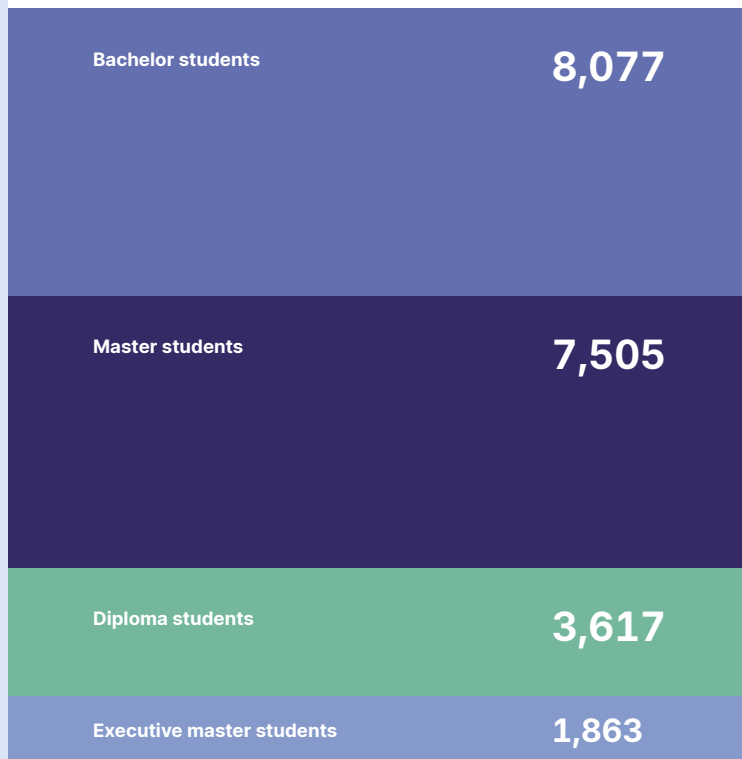
Graduates

2,181 Bachelor students

3,225 Master students



Student population



Full-time bachelor programmes

	Language	Students	Enrolment	Graduates
HA i erhvervsøkonomi BSc in Economics and Business Administration	Danish	1,848	691	514
HA i markeds- og kulturanalyse BSc in Business Administration and Market Dynamics and Cultural Analysis	Danish	292	108	75
HA i projektledelse BSc in Business Administration and Project Management	Danish	377	136	112
HA(fil.) – erhvervsøkonomi og filosofi BSc in Business Administration and Philosophy	Danish	202	68	43
HA(it.) – erhvervsøkonomi og informationsteknologi BSc in Business Administration and Information Systems	Danish	424	155	82
HA(jur.) – erhvervsøkonomi og erhvervsjura BSc in Business Administration and Commercial Law	Danish	605	215	177
HA(kom.) – erhvervsøkonomi og virksomhedskommunikation BSc in Business Administration and Organisational Communication	Danish	445	149	141
HA(mat.) – erhvervsøkonomi og matematik BSc in Business Administration and Mathematical Business Economics	Danish	277	96	64
HA(psyk.) – erhvervsøkonomi og psykologi BSc in Business Administration and Psychology	Danish	425	146	134

Full-time bachelor programmes

	Language	Students	Enrolment	Graduates
BSc in Business Administration and Digital Management	English	506	173	112
BSc in Business Administration and Service Management	English	412	137	113
BSc in Business Administration and Sociology	English	242	81	63
BSc in International Business	English	650	220	164
BSc in International Business and Politics	English	371	137	102
BSc in International Shipping and Trade	English	195	66	48

Full-time and part-time master programmes

	Language	Students	Enrolment	Graduates
Cand.merc. i erhvervsøkonomi i				
MSc in Economics and Business Administration in				
finansiering og regnskab Finance and Accounting	Danish	309	159	126
finansiering og regnskab – erhvervskandidat Finance and Accounting – part-time master	Danish	<5		
økonomisk markedsføring Economics and Marketing	Danish	156	85	63
økonomisk markedsføring – erhvervskandidat Economics and Marketing – part-time master	Danish	<5	<5	
MSc in Economics and Business Administration in				
Cand.merc. i erhvervsøkonomi				
Accounting, Strategy and Control	English	195	95	66
Finance and Investments	English	266	136	91
Finance and Strategic Management	English	308	138	145
General Management and Analytics	English	869	437	242
Management of Innovation and Business Development	English	328	160	115
Sales Management	English	141	58	48
Strategy, Organisation and Leadership	English	232	115	72
Supply Chain Management	English	162	79	34
Supply Chain Management – part-time master	English	<5		

Full-time and part-time master programmes

	Language	Students	Enrolment	Graduates
Cand.merc.(jur.) – erhvervsøkonomi og erhvervsjura MSc in Business Administration and Commercial Law	Danish	354	187	139
Cand.merc.(kom.) – erhvervsøkonomi og virksomhedskommunikation MSc in Business Administration and Organisational Communication	Danish	329	153	126
Cand.merc.(mat.) – erhvervsøkonomi og matematik MSc in Business Administration and Mathematical Business Economics	Danish	141	66	62
Cand.merc.(psyk.) – erhvervsøkonomi og psykologi MSc in Business Administration and Psychology	Danish	258	113	87
MSc in Business Administration and Bioentrepreneurship	English	72	39	37
MSc in Business Administration and Data Science	English	311	143	110
MSc in Business Administration and Digital Business	English	458	211	166
MSc in Business Administration and Digital Business – part-time master	English	22	8	<5
MSc in Business Administration and Information Systems	English	221	113	115
MSc in Business Administration and Innovation in Health Care	English	102	47	38
MSc in Business Administration and Philosophy	English	64	30	31
MSc in International Business and Politics	English	315	149	96

Full-time and part-time master programmes

	Language	Students	Enrolment	Graduates
Cand.soc. i Human Resource Management MSSc in Human Resource Management	Danish	195	89	101
MSSc in Organisational Innovation and Entrepreneurship	English	140	68	78
MSSc in Strategic Design and Entrepreneurship	English	45	21	13
MSSc in Public Management and Social Development	English			
Cand.merc.aud. – revision MSc in Business Administration and Auditing	Danish	185	92	75
Cand.merc.aud. – revision – erhvervs kandidat MSc in Business Administration and Auditing – part-time master	Danish	479	136	145
MSc in Business, Language and Culture – Business and the Global South	English			
MSc in Economics and Finance – Advanced Economics and Finance	English	118	55	
MSc in Economics and Finance – Applied Economics and Finance	English	265	130	

CONTINUING EDUCATION

Today, we are students for life. Modern worklife is fast-changing and requires adaptive change and continuous, transformative learning to deal with changing job markets and a knowledge economy in constant development.

A key aspect of our profile is the wide range of part-time programmes and courses targeting executives and business professionals.

Our continuing education programmes range from diploma programmes (HD) and executive master programmes to MBAs, Summer University courses and short-format courses.

With our continuing education, we ensure that business professionals have updated business knowledge and gain skills through our research-based programmes. We inspire them to engage in social and organisational innovation to take active part in shaping the future of sustainable and democratic societies.

MBA programmes

Full-time MBA [EN](#)

Executive MBA [EN](#)

Executive MBA in Shipping and Logistics [EN](#)

Executive master programmes

Master of Business Development [DA/EN](#)

Master of Management Development [DA](#)

Master of Public Governance [DA](#)

Master of Tax [DA](#)

HD (diploma programmes)

HD1 (graduate certificate in business administration) [DA](#)

HD2 (graduate diploma in business administration):

- HD2 Business [DA](#)
- HD2 Finance [DA](#)
- HD2 Financial and Management Accounting [DA](#)
- HD2 International Business [EN](#)
- HD2 Maritime [EN](#)
- HD2 Organisation and Management [DA](#)
- HD2 Strategic Sales and Marketing [DA](#)
- HD2 Supply Chain Management [EN](#)

Executive non-degree programmes

CBS Executive Foundation offers high-level, targeted supplementary training and management development programmes

INTERNATIONALISATION

Exchange students

North America

308 ingoing
236 outgoing

Exchange students

Europe

533 ingoing
561 outgoing

Exchange students

Asia and Oceania

397 ingoing
395 outgoing

Exchange students

Central and South America

112 ingoing
68 outgoing

Exchange students

Africa and the Middle East

15 ingoing
7 outgoing

294 Exchange and cooperation agreements worldwide

29 Programmes taught in English

4,317 International students

CBS is a highly international university. We maintain a strong focus on our students' possibility to take parts of their education at a partner university abroad. At the same time, the integration of foreign students is a natural and important added value to the internationalisation of CBS' own student environment. CBS has exchange and cooperation agreements with universities and business schools all over the world.



FINANCIAL HIGHLIGHTS

31 December 2025

Income (in million €)

Government subsidies	182.11
Other grants	26.88
Sale of goods and services	2.94
Other income	28.21

Total income €240.14

Expenses (in million €)

Staff costs	151.36
Rent	14.21
Depreciation and impairment losses	6.13
Other operating expenses	51.88
Financial expenses	0.79

Total expenses €224.36



Around 76% of CBS' financial base comes from state funding, research grants and performance-based education grants. CBS strives to increase the external share of research funding.

Approximately 11% of CBS' income comes from tuition fees (included in other income), 11% from external funding (other grants) and 1% from sale of goods and services.

INTERNATIONAL RECOGNITION

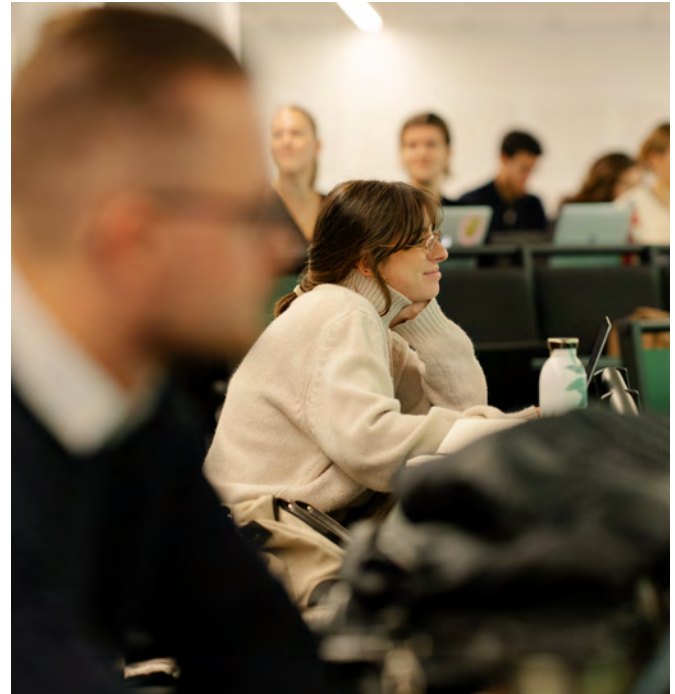


Since 2000, CBS has been accredited by EQUIS (European Quality Improvement System) and since 2007, also by AMBA (Association of MBAs). On 1 August 2011, CBS received accreditation by AACSB (Association to Advance Collegiate Schools of Business) as the first school in Scandinavia.

CBS has thus acquired 'The Triple Crown', an acknowledgement shared by less than 150 institutions worldwide.



CBS is the Danish member of CEMS – The Global Alliance in Management Education and a member of Partnership in International Management (PIM).



CAREER PARTNERSHIPS

CBS Careers connects students with the business community, bridging academia and the labour market.

In collaboration with 37 Career Partners, CBS Careers helps students build career readiness and gain relevant experience during their studies.

Through events, seminars, networking, student jobs, project collaborations and mentorships, students engage directly with companies and organisations.

This gives them practical insights, strengthens their skills and prepares them for professional life.

CBS Career Partners



OUR CAMPUS

CBS is located centrally in Copenhagen in the independent municipality of Frederiksberg.

Every day, we enjoy the advantages of an architecturally attractive university campus. The central location of our buildings provides us with a valuable foundation for well-being among students and staff and close cooperation with the business community, authorities and society.

We continuously strive to develop a unique and attractive campus environment. We encourage students and staff to use our campus and make it their own, create lasting friendships and experience personal growth through learning, knowledge sharing and transforming together.

Most research and teaching activities take place in four modern buildings. The main complex at Solbjerg Plads, the architecturally acclaimed building by architect Henning Larsen in Dalgas Have and Kilen (the Wedge) all reflect the characteristic Scandinavian style. CBS has also rebuilt parts of the former Royal Copenhagen porcelain factory, and all parts of CBS Campus are within walking distance.



Campus area

About 138,000 m² distributed on 16 locations



In 2025, the library had approximately 850.000 visitors and almost 6 mio. physical loans and e-downloads.

CBS Library and Academic Services supports education, research and communication at CBS by making information, knowledge and services available on campus and through online resources.

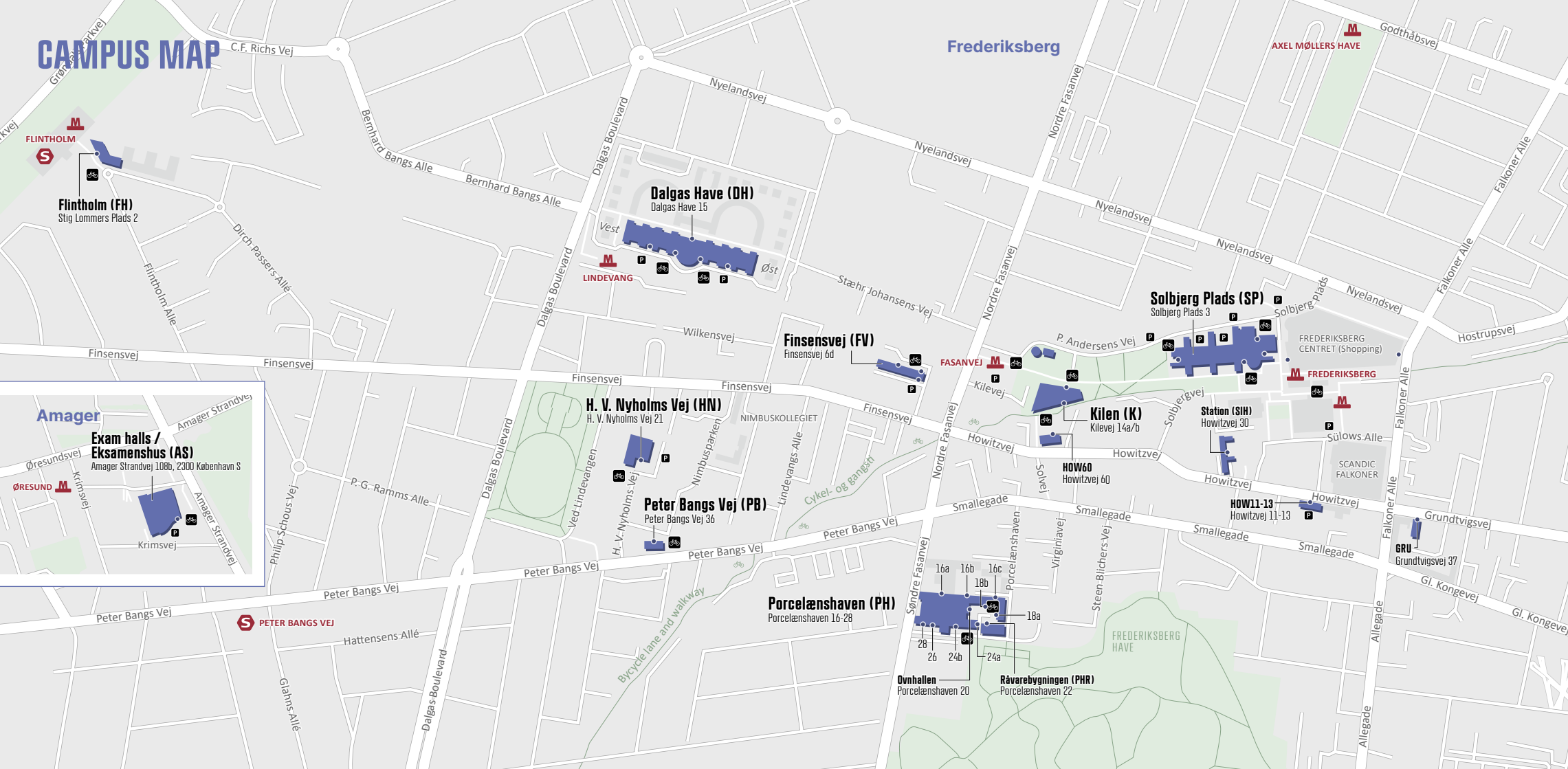
As an integral part of CBS, the library guides and teaches students and faculty how to navigate and search in a knowledge-intensive world. In 2025, CBS Library hosted or contributed to almost 400 lessons with more than 9000 attendees.

Furthermore, the library also provides extensive data and research support, including High Performance Computing, Open Access, Open Science, Research Data Management and research publication services.

The library also leads the strategic focus area “AI and Digitalisation”, strengthening CBS’ research and educational ambitions in a rapidly evolving digital landscape.

In addition, the library is open to the public, thereby expanding its reach to people who are not currently enrolled at CBS. More than 600 study seats are offered all over CBS’ campus.

CAMPUS MAP



FLINTHOLM

Flintholm (FH)
Stig Lommers Plads 2

Dalgas Have (DH)
Dalgas Have 15

LINDEVANG

Finsensvej (FV)
Finsensvej 6d

Kilen (K)
Kilevej 14a/b

H. V. Nyholms Vej (HN)
H. V. Nyholms Vej 21

Peter Bangs Vej (PB)
Peter Bangs Vej 36

PorcelænsHAVEN (PH)
PorcelænsHAVEN 16-28

Solbjerg Plads (SP)
Solbjerg Plads 3

Station (SIH)
Howitzvej 30

HOW60
Howitzvej 60

HOW11-13
Howitzvej 11-13

Øvnhallen
PorcelænsHAVEN 20

Råvarebygningen (PHR)
PorcelænsHAVEN 22

FREDERIKSBERG CENTRET (Shopping)

SCANDIC FALKONER

GRU
Grundtvigsvej 37

Amager

Exam halls / Eksamenhus (AS)
Amager Strandvej 108b, 2300 København S

ØRESUND

PETER BANGS VEJ