

# **CBS SUMMER UNIVERSITY**

*2026*

# CBS SUMMER 2026



*“I’ve always been attracted to the city of Copenhagen; it’s a beautiful place, and CBS is a high-quality academic institution. I’ve always wanted to study here”*

**MARTON**

WIRTSCHAFTSUNIVERSITÄT WIEN, AUSTRIA

- 6. *Welcome*
- 8. *CBS in numbers*
- 10. *Academic info*
- 12. *Courses and faculty*
- 16. *Social programme*
- 18. *Accommodation*
- 20. *Copenhagen life*
- 22. *How to apply*



## IMPORTANT DATES FOR 2026:

### APPLICATION ROUND FOR INTERNATIONAL STUDENTS

The application portal opens at [cbs.dk/summer](https://cbs.dk/summer) on 27 January 2026.  
The deadline for applying is 14 April 2026 at 12:00 CEST.

### ARRIVAL DAY

19 June 2026 (also earliest possible day to  
move into CBS Accommodation)

### ORIENTATION ACTIVITIES:

Social meet-up for international students 20 June 2026  
Introduction Sessions 22 June 2026

### COURSE PERIOD:

6-week courses (7.5 ECTS): 22 June - 31 July 2026  
3-week courses (7.5 ECTS): 22 June - 10 July 2026  
2-week courses (3 ECTS): 22 June - 3 July 2026

*NB! Some exams may extend beyond the course period.  
You can find more information about the exam for specific  
courses in the CBS Course Catalogue.*

*Exam dates are visible at [cbs.dk/summer](https://cbs.dk/summer)*



# WELCOME

We invite you to join us on a journey of learning and cultural exploration at the CBS Summer University, Copenhagen Business School (CBS).

Established in 1999, the CBS Summer University embarked on a transformative journey marked by growth and innovation. Today, it stands as one of Europe's most enduring and expansive programmes, offering approximately 50 diverse business courses and attracting more than 2000 students every year.

Enrolling in your CBS Summer opens the gateway for you to immerse yourself in the academic excellence of Copenhagen Business School, an internationally accredited university.

Studying in Copenhagen also allows you to expand your network in one of the world's best cities to live in. Our programme welcomes both domestic and international students, as well as professionals, providing a unique global perspective.

Beyond academics, we offer a vibrant cultural and social programme, immersing you in Copenhagen's lively spirit and Danish traditions.

Join CBS Summer University and be part of an international community focused on curiosity, discovery, and shared experiences.



# CBS IN NUMBERS

## *Facts & Figures 2025:*

**1999**

80 CBS SUMMER STUDENTS ACROSS 4 COURSES

**2021**

2300+ CBS SUMMER STUDENTS ACROSS 40 COURSES

**2025**

2,549 CBS SUMMER STUDENTS ACROSS 50 COURSES

**291**

EXCHANGE AND COOPERATIVE AGREEMENTS WORLDWIDE

**21,108**

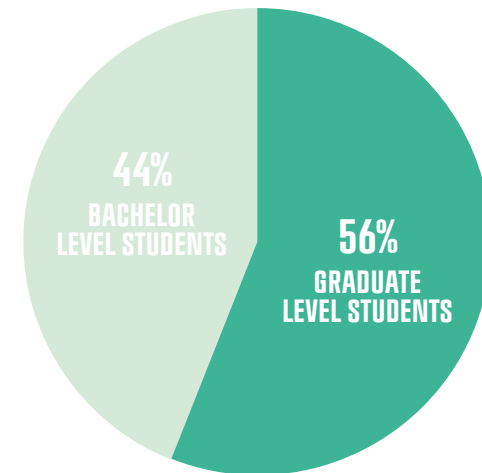
STUDENT POPULATION

**4,174**

INTERNATIONAL STUDENTS

**2,549**

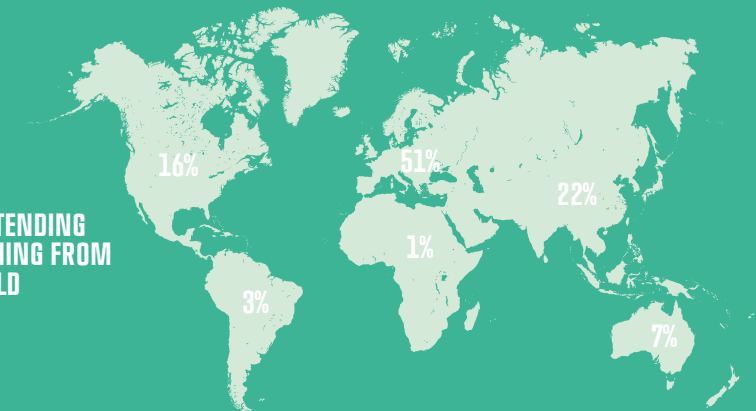
CBS SUMMER STUDENTS



*(out of total 2,549 students)*

**50+**

NATIONALITIES ATTENDING CBS SUMMER COMING FROM AROUND THE WORLD



# ACADEMIC INFO



*“It’s been quite interesting to work on the same common problem we want to solve in class, but from such different perspectives and cultural identities.”*

**BETHANY**  
DEAKIN UNIVERSITY, AUSTRALIA

## WE OFFER THREE TYPES OF COURSES:

**6-week courses:** You can combine up to two of these courses (7.5 ECTS each, that is 15 ECTS in total).

**3-week courses:** These courses are intensive (7.5 ECTS) and cannot be combined with any other course type.

**2-week courses:** These courses are intensive (3 ECTS) and cannot be combined with any other course type.

## FIRST DAY OF TEACHING

All courses start on 22 June, 2026.

## CLASSROOM HOURS

You can expect 30, 38 (7.5 ECTS courses) or 16-18 (3 ECTS courses) classroom hours depending on your course type and its academic level.

## BACHELOR AND GRADUATE COURSES

We offer courses at both bachelor and graduate level.

Courses within classic business disciplines as well as more diverse and innovative academic areas.

All courses are taught in English.

## COURSE PREREQUISITIES:

Make sure to read the course description in the course catalogue for any prerequisites.

## EXAMS:

You can find all exam dates online at our webpage. Visit: [cbs.dk/summer](https://cbs.dk/summer).

## FURTHER INFO:

Visit our webpage [cbs.dk/summer](https://cbs.dk/summer) for up-to-date information on courses, application procedures, exam dates, and more.

# COURSES AND FACULTY



## COURSES

Within classic business disciplines, such as:

- *Accounting*
- *Communication*
- *Economics*
- *Finance*
- *Management*
- *Marketing*
- *Organisation*
- *Strategy*
- *Statistics*

Combined with courses in more diverse disciplines, such as:

- *CSR and sustainability*
- *Entrepreneurship*
- *Globalisation*
- *Information technology*
- *Innovation*
- *Psychology*
- *Supply chain management and logistics*

## LECTURES

6-week courses will be taught either on Mondays and Wednesdays or Tuesdays and Thursdays and in addition on two Fridays. Most 2-week and 3-week courses will be taught every weekday

## TEACHING METHOD

Based on in-class learning, few blended learning courses

## COURSE APPROVAL

All CBS Summer courses are approved by CBS Study Boards and have the status of electives for all CBS full degree programmes.

## FACULTY

Each year CBS Summer invites a strong field of outstanding and dedicated faculty members. They are all highly experienced and have strong backgrounds within research. The vast majority holds a PhD from renowned universities.







# SOCIAL PROGRAMME



*“On my first day here, it seemed like the entire city of Copenhagen was gathered around the water, jumping into the harbor. It was very vibrant and such a unique cultural experience.”*

**ABRAHAM**  
TULANE UNIVERSITY, USA

## CULTURAL ACTIVITIES

The CBS Summer University offers a variety of cultural and social activities throughout its duration, including a welcoming meet-up, guided tours of Copenhagen, Danish folk dancing, cultural day trips, comedy nights, and more.

The Social Programme aims to introduce you to Danish culture, the lively city of Copenhagen, and help participants connect. It is not included in the tuition fees, and a nominal fee is required for those who wish to join. In 2025, the all-inclusive package for these activities was priced at DKK 800.

## DAY EXCURSION

Join us on a day excursion to unearth the wonders of Denmark beyond the confines of Copenhagen. For instance, in 2025 we visited Møns Klint, a natural wonder on the island of Møn.

## FURTHER INFO

Visit [cbs.dk/summer](https://cbs.dk/summer) for more information on the Social Programme, and other activities offered in connection with the introduction to CBS and Copenhagen. You are always welcome to contact our Social Programme Coordinators at [esp.intoff@cbs.dk](mailto:esp.intoff@cbs.dk).

# ACCOM- MODATION

## MOVE IN DATE

19 June is the earliest possible date to move in. Check in at 12 noon.

## ARRIVAL SERVICE

Key pick-up at the airport.

## 6 DIFFERENT DORMS

Most dorms are located within 10-20 minutes walking distance from the main CBS Campus. All dorm rooms are fully furnished and have access to Wi-Fi.

## PRICE

Price range depending on room size, if it is a single or shared room. We also offer housing to students taking 2-week or 3-week courses, but you will have to rent the room for one entire month.

## MOVE OUT DATE

2 August is the latest possible date to move out for students taking 6-week courses. Check out at 12 noon. 19 July is the latest possible date to move out for students taking 3-week courses. Check out at 12 noon.

## FURTHER INFO:

Go to [cbs.dk/summer](https://cbs.dk/summer) for more information on accommodation offers, room sizes, latest prices and everything else you need to know about accommodation through CBS.

Contact CBS Housing Department at [housing.intoff@cbs.dk](mailto:housing.intoff@cbs.dk)





# COPENHAGEN LIFE

## NO. 2

HAPPIEST NATION IN  
THE WORLD ACCORDING  
TO 'WORLD HAPPINESS  
REPORT'

## BIKING

IS ONE OF THE EASIEST  
WAYS TO GET AROUND AND  
IS ALMOST A MUST FOR  
A TRULY COPENHAGEN  
EXPERIENCE

## NO. 2

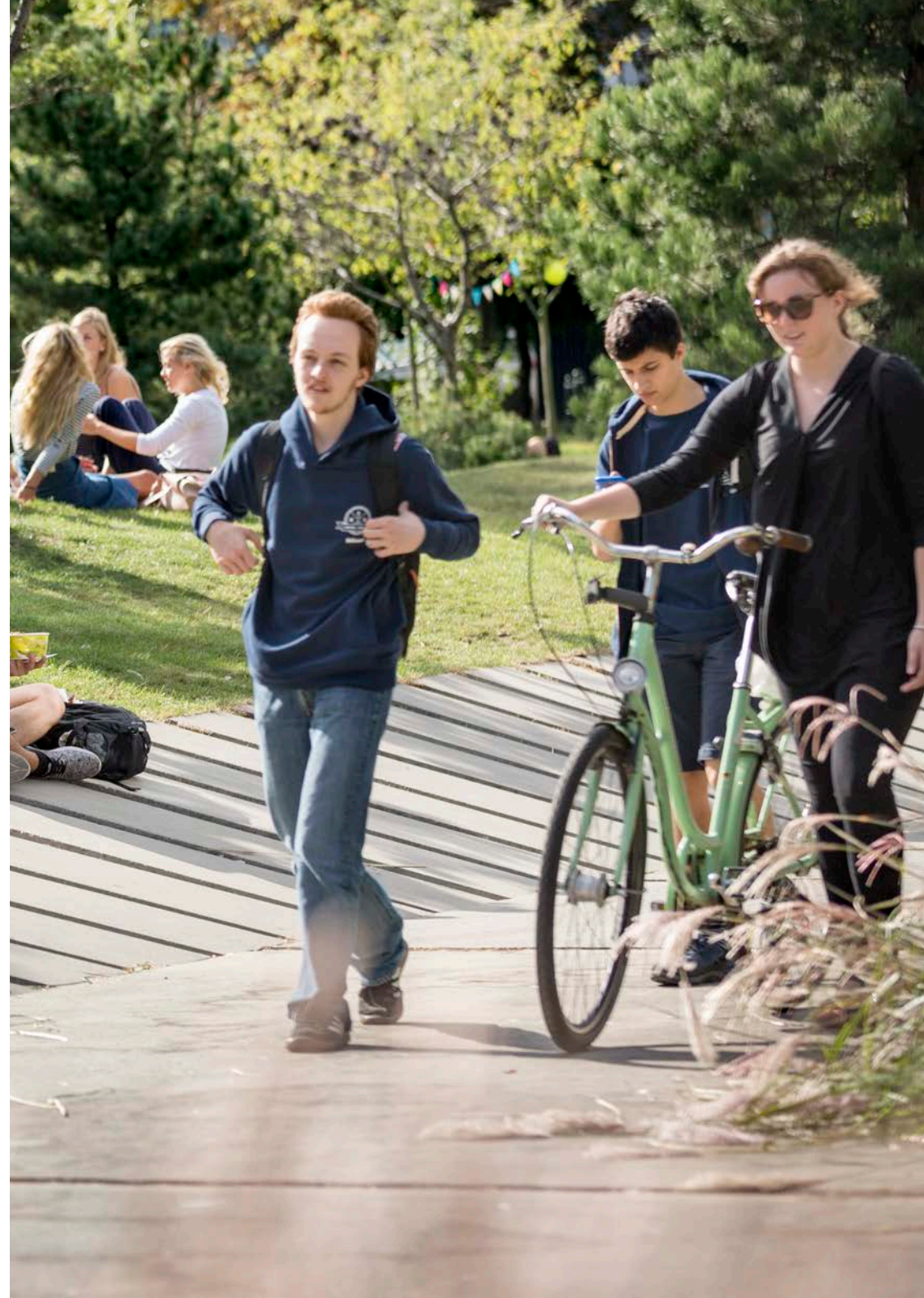
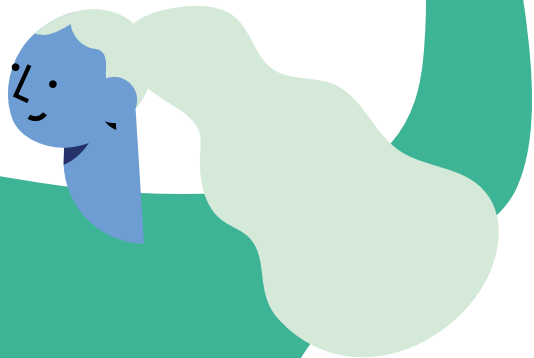
BEST QUALITY OF LIFE'  
CITY IN THE WORLD  
ACCORDING TO  
DEUTSCHE BANK

## NO. 1

CITY TO SWIM IN  
ACCORDING TO CNN

## 50%

BIKE TO AND FROM  
WORK EVERY DAY





# APPLYING FOR CBS SUMMER UNIVERSITY



*“I liked the selection of courses. The academic level was really good, and there was always someone you could reach out to if you needed any assistance.”*

**FELICITY**

UNIVERSITY OF LEEDS, UK

## APPLICATION PERIOD:

**27 January - 14 April 2026**

We welcome International students from both EU-member countries and non-EU countries, as well as business professionals and lifelong learners.

## FEES\*

You can read more about the different student categories and whether you are required to pay tuition fees at [cbs.dk/summer](https://cbs.dk/summer).

## HOW TO APPLY

Students must apply through the online application system.

Link to the online application system will only be available online at [cbs.dk/summer](https://cbs.dk/summer) under “Application and fees”.

## ENGLISH PROFICIENCY

All courses at CBS Summer University are taught in English.

We therefore recommend that students have an english proficiency corresponding to:

**Cambridge Certificate of Advanced English (CAE):**

Minimum result of 185.

**Cambridge Certificate of Proficiency in English (CPE):**

Minimum of 185.

**IELTS Academic Test:**

Minimum result of 7.0.

**TOEFL IBT:**

Minimum result of 94.

## FURTHER INFO:

Visit [cbs.dk/summer](https://cbs.dk/summer) for up-to-date information on courses, the full academic outline, application procedures, and exam dates.

