

CBS LEARNING LAB
EVALUATION UNIT



Evaluation of Study Programmes at CBS

2009/10

**Programmes in English
To be published**

November 10

CONTENTS:

THE SURVEY	3
1. OVERVIEW	4
1.1 REPLY RATES. GROUP OF PROGRAMMES.....	4
1.2 EVALUATION BY GROUPS OF PROGRAMMES	5
2. BACHELOR PROGRAMMES IN DANISH	11
2.1. EVALUATION OF BACHELOR PROGRAMMES IN DANISH.....	11
3. BACHELOR PROGRAMMES IN ENGLISH	17
3.1. EVALUATION OF BACHELOR PROGRAMMES IN ENGLISH	17
4. CM CONCENTRATIONS IN DANISH	23
4.1. EVALUATION OF CM CONCENTRATIONS IN DANISH	23
5. CM CONCENTRATIONS IN ENGLISH	30
5.1. EVALUATION OF CM CONCENTRATIONS IN ENGLISH.....	30
6. OTHER CM PROGRAMMES	36
6.1. EVALUATION OF “OTHER CM PROGRAMMES”	36
7. CAND.SOC. PROGRAMMES	42
7.1. EVALUATION OF CAND. SOC. PROGRAMMES	42

List of Tables

<i>Tabel 1.1 Reply rates. All programmes at CBS</i>	4
<i>Tabel 1.2 Evaluation of all Programmes at CBS</i>	5
<i>Figure 1.1 Evaluation. Selected questions. All programmes at CBS</i>	6
<i>Table 2.1 Evaluation of Bachelor Programmes in Danish</i>	11
<i>Figure 2.1 Evaluation Selected questions. Bachelor Programmes in Danish</i>	12
<i>Table 3.1 Evaluation of Bachelor Programmes in English</i>	17
<i>Figure 3.1 Evaluation Selected questions. Bachelor Programmes in English</i>	18
<i>Table 4.1 Evaluation of CM concentrations in Danish</i>	23
<i>Figure 4.1 Evaluation Selected questions. CM concentrations in Danish</i>	24
<i>Table 5.1 Evaluation of CM concentrations in English</i>	30
<i>Figure 51 Evaluation Selected questions. CM concentrations in English</i>	31
<i>Table 6.1 Evaluation of Other CM Programmes</i>	36
<i>Figure 6.. Evaluation. Selected questions. Other CM Programmes</i>	37
<i>Table 7.1 Evaluation of Cand. Soc. Programmes</i>	42
<i>Figure 7.1 Evaluation Selected questions. Cand. Soc. Programmes</i>	43

The Survey

During the academic year 2008/2009, CBS initiated evaluations of each year of study of individual programmes, by means of standard evaluation forms which were sent to students for the first time in June 2009. Thus, students in each year of a specific programme received an evaluation form in which they were asked about the year of study which was just completed.

These evaluations serve three main purposes:

1. to collect information about the student experience as regards the continuity and progression of a programme, covering, in particular, areas that are not evaluated in the regular course evaluations
2. to collect information to serve as documentation in the national and international accreditation process
3. to ensure that evaluation results are systematically published on CBS' homepage without risking identification of individual teachers (under the heading 'Act of transparency' at http://uk.cbs.dk/about_cbs_campus/quality/act_on_transparency)

We hope you will find the report useful in its present form and welcome any feedback regarding structure etc.

Best regards,
The Evaluation Unit
CBS Learning Lab

1. Overview

1.1 Reply rates. Group of Programmes

Tabel 1.1 Reply rates. All programmes at CBS

Total number of invited students

			Year					Total
			1st year	2nd year	3rd year	4th year	5th year	
Group of Programmes	Bachelor programmes in Danish	Count	1552	1444	1522			4518
		%	100%	100%	100%			100%
	Bachelor programmes in English	Count	560	420	434			1414
		%	100%	100%	100%			100%
	CM Concentrations in Danish	Count				657	732	1389
		%				100%	100%	100%
	CM Concentrations in English	Count				1053	821	1874
		%				100%	100%	100%
	Other CM programmes	Count				1134	344	1478
		%				100%	100%	100%
	Cand.Soc. programmes	Count				278	100	378
		%				100%	100%	100%
Total		Count	2112	1864	1956	3122	1997	11051
		%	100%	100%	100%	100%	100%	100%

Number of replies

			Year					Total
			1st year	2nd year	3rd year	4th year	5th year	
Group of Programmes	Bachelor programmes in Danish	Count	420	438	476			1334
		Reply rate	27%	30%	31%			30%
	Bachelor programmes in English	Count	194	137	157			488
		Reply rate	35%	33%	36%			34%
	CM Concentrations in Danish	Count				253	180	433
		Reply rate				39%	25%	32%
	CM Concentrations in English	Count				320	326	646
		Reply rate				30%	40%	35%
	Other CM programmes	Count				220	65	285
		Reply rate				19%	19%	19%
	Cand.Soc. programmes	Count				79	56	135
		Reply rate				28%	56%	42%
Total		Count	614	575	633	872	627	3321
		Reply rate	31%	31%	34%	23%	28%	29%

1.2 Evaluation by groups of programmes

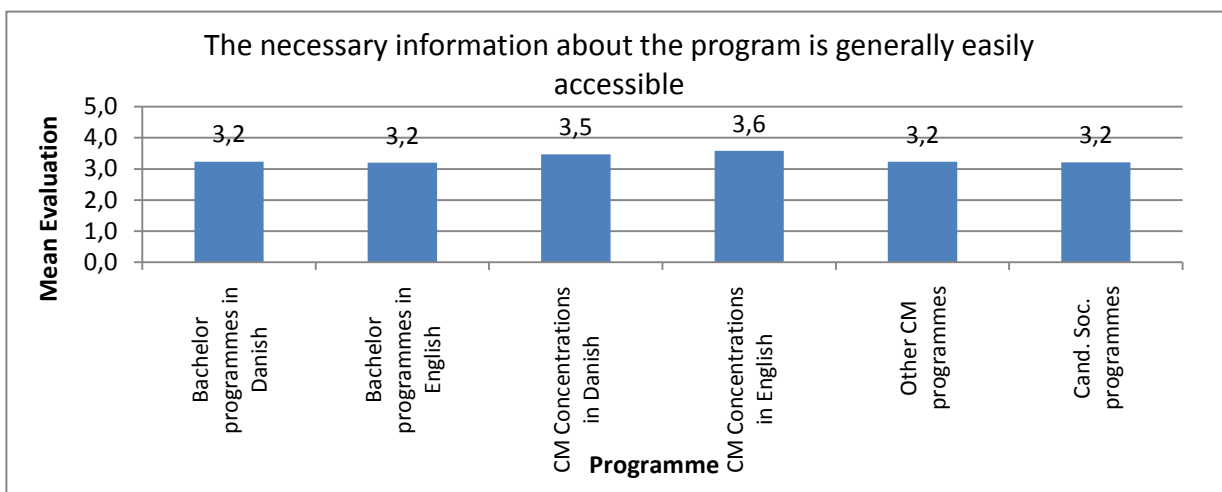
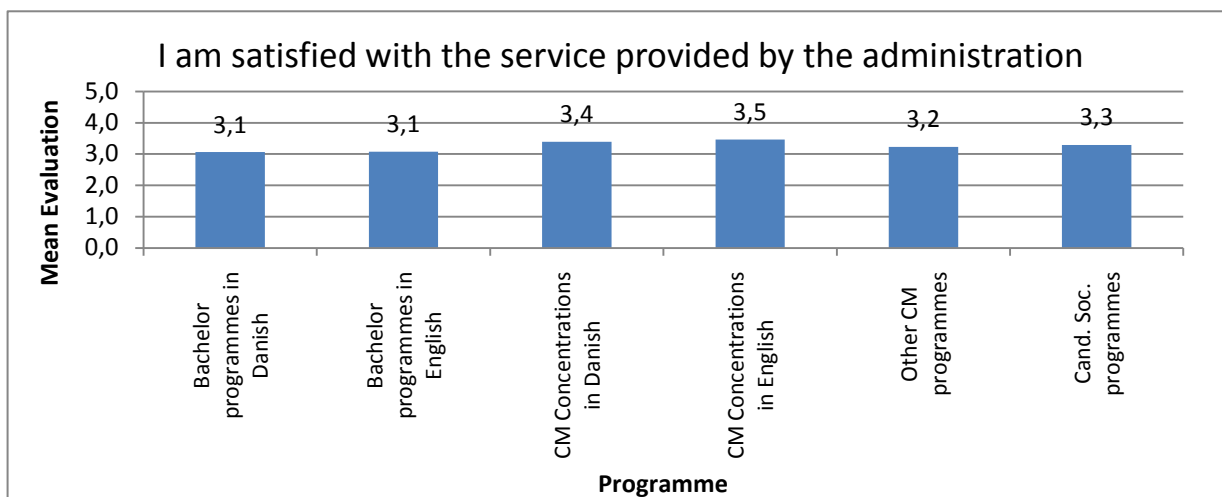
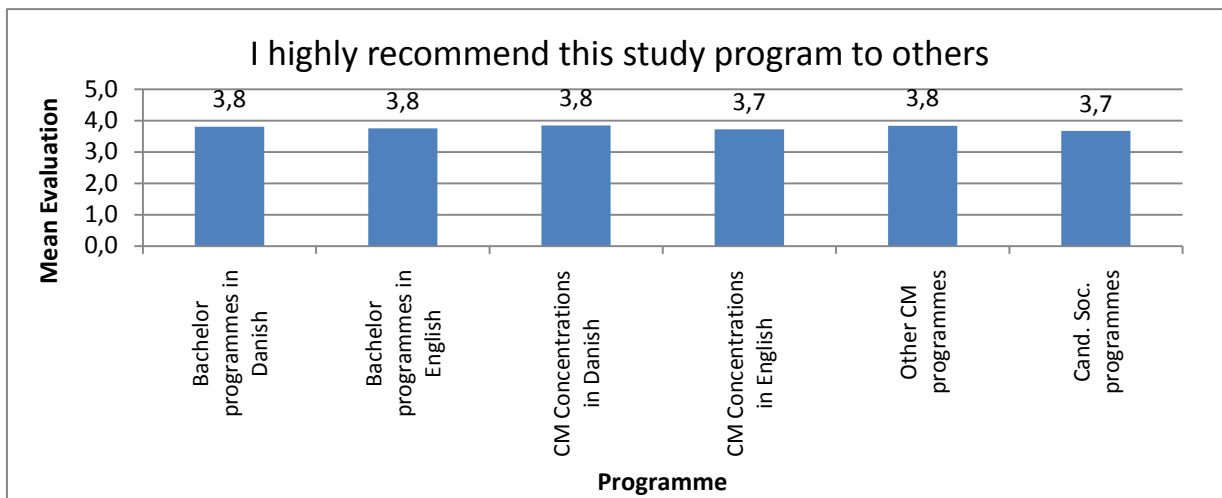
Tabel 1.2 Evaluation of all Programmes at CBS

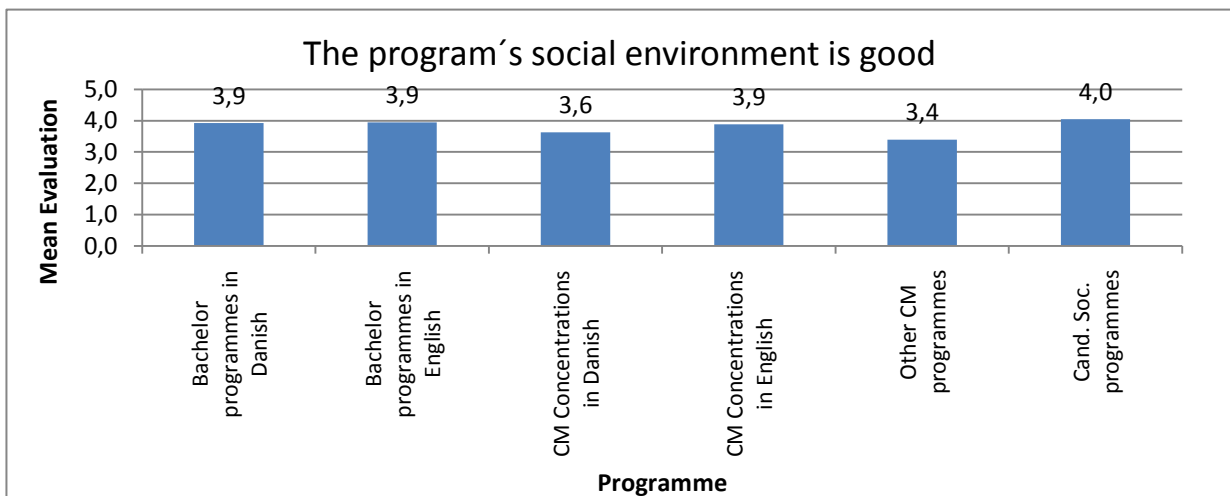
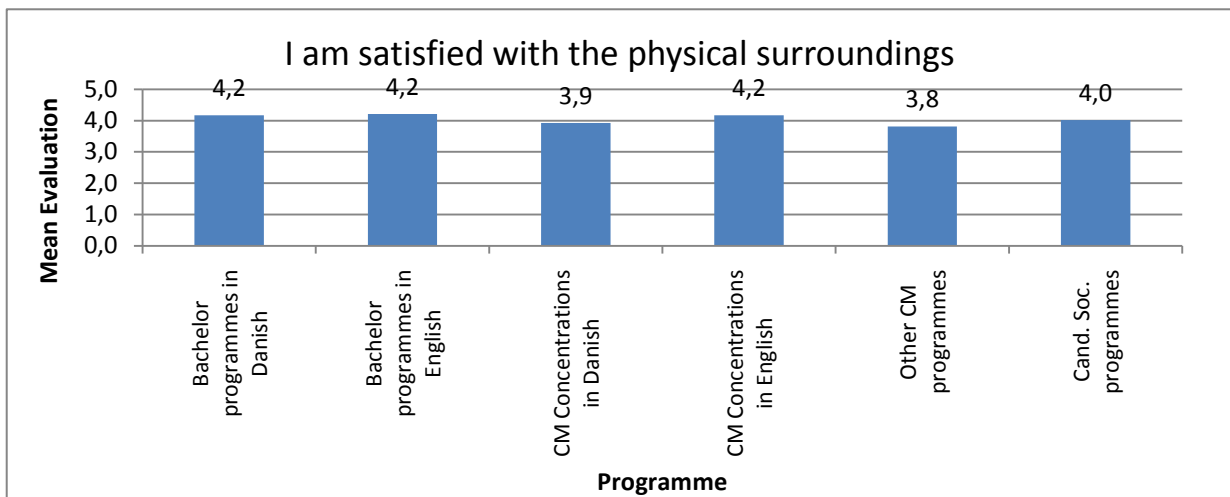
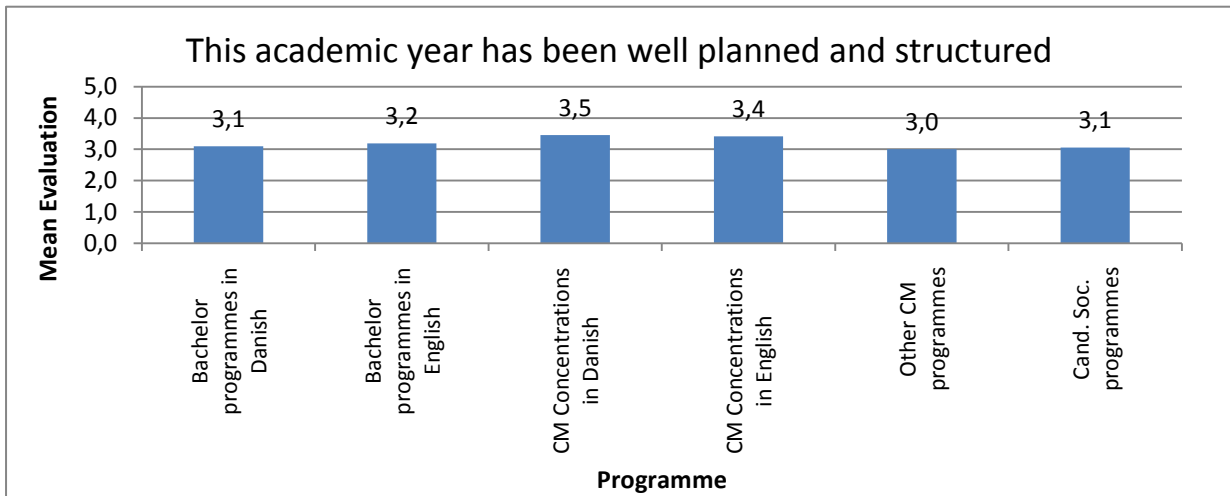
		Programmes						
		Bachelor programmes in Danish	Bachelor programmes in English	CM Concentrations in Danish	CM Concentrations in English	Other CM programmes	Cand. Soc. programmes	Total
I highly recommend this study program to others	Mean	3,8	3,8	3,8	3,7	3,8	3,7	3,8
	No. of valid answers	1334	488	433	646	285	135	3321
I am satisfied with the service provided by the administration	Mean	3,1	3,1	3,4	3,5	3,2	3,3	3,2
	No. of valid answers	1309	476	422	633	277	133	3250
The necessary information about the program is generally easily accessible	Mean	3,2	3,2	3,5	3,6	3,2	3,2	3,3
	No. of valid answers	1313	478	423	632	280	133	3259
This academic year has been well planned and structured	Mean	3,1	3,2	3,5	3,4	3,0	3,1	3,2
	No. of valid answers	1312	478	408	619	265	133	3215
I am satisfied with the physical surroundings	Mean	4,2	4,2	3,9	4,2	3,8	4,0	4,1
	No. of valid answers	1318	479	423	628	276	134	3258
The program's social environment is good	Mean	3,9	3,9	3,6	3,9	3,4	4,0	3,8
	No. of valid answers	1312	477	406	624	254	132	3205
This academic year has been intellectually challenging	Mean	4,1	4,2	4,1	4,1	4,1	3,9	4,1
	No. of valid answers	1295	475	409	606	265	133	3183
All subjects have contributed to the overall study program and its context	Mean	3,6	3,8	3,6	3,6	3,6	3,3	3,6
	No. of valid answers	1291	475	393	594	249	133	3135
The way examinations are held allows me to demonstrate the knowledge I have acquired	Mean	3,5	3,4	3,5	3,3	3,4	3,2	3,5
	No. of valid answers	1290	476	397	602	255	132	3152
The academic year has given me the opportunity to immerse myself in already familiar academic problems, theories and methods	Mean	3,7	3,7	3,8	3,8	3,7	3,6	3,7
	No. of valid answers	1277	469	402	604	264	132	3148
The academic year has familiarized me with new academic problems, theories and methods	Mean	4,2	4,2	4,1	4,0	4,0	4,1	4,1
	No. of valid answers	1297	474	406	608	264	133	3182
Overall, the classes have been able to involve and motivate me whilst maintaining my interest	Mean	3,5	3,5	3,7	3,5	3,5	3,6	3,5
	No. of valid answers	1296	472	399	600	259	133	3159
The academic year has given me competencies that I expect to apply in my future job	Mean	3,9	3,6	4,0	3,7	3,9	3,8	3,8
	No. of valid answers	1267	459	405	600	264	132	3127
CBS is a highly internationally-oriented university	Mean	3,7	3,6	3,7	3,8	3,6	3,5	3,7
	No. of valid answers	1255	470	405	619	257	130	3136
Population		4518	1414	1389	1874	1478	378	

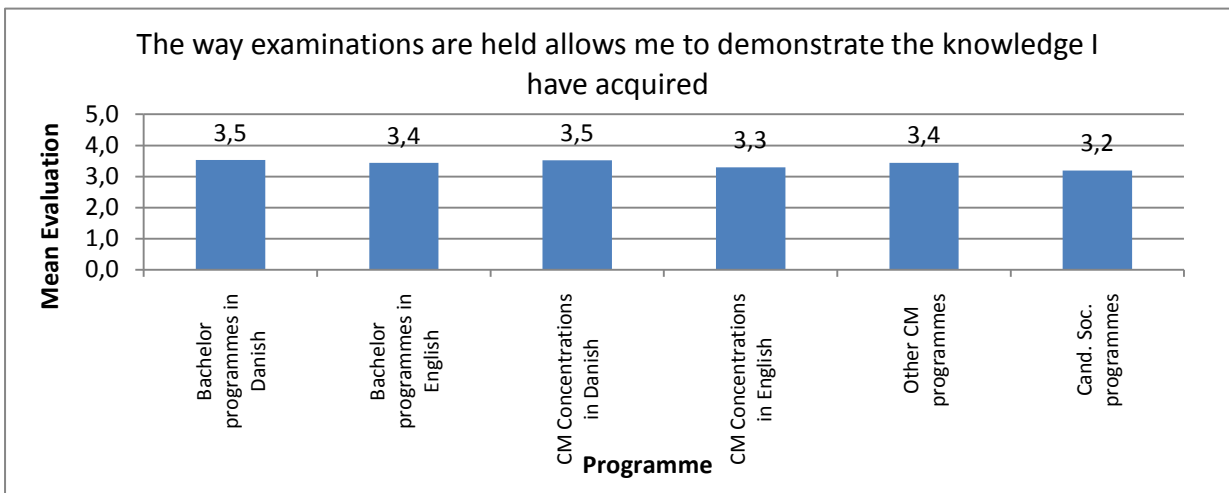
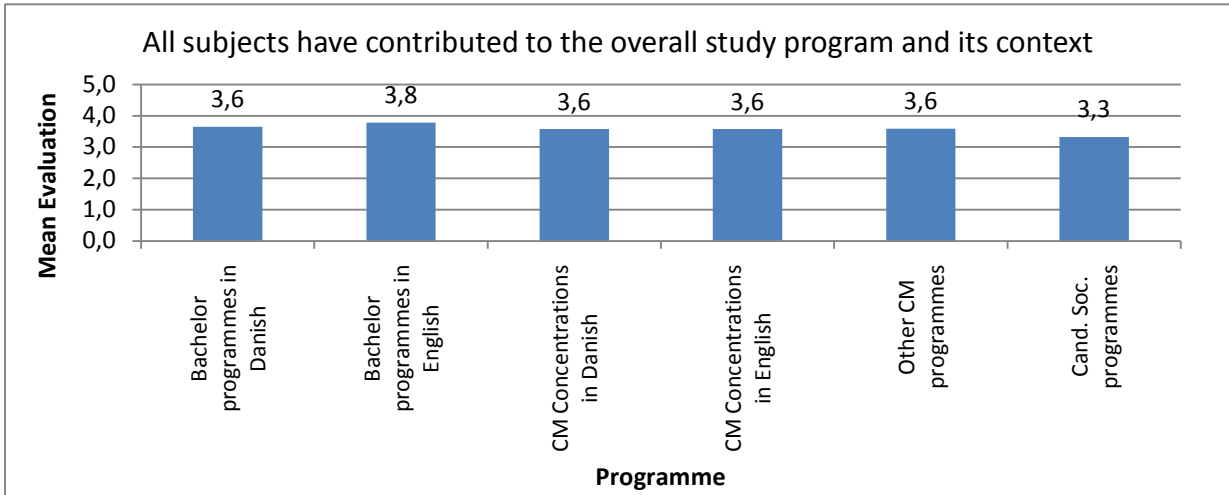
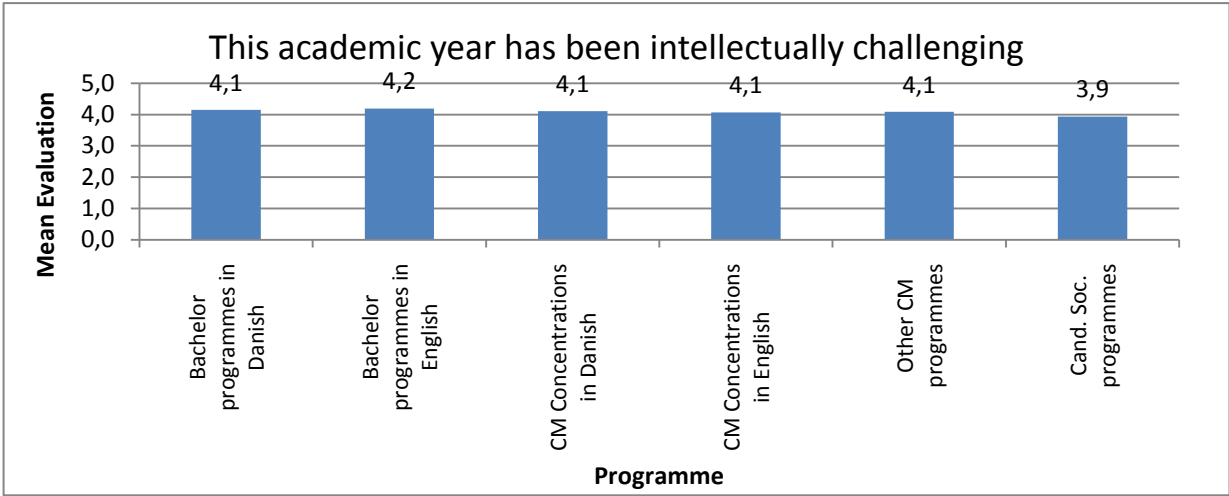
Values for calculating means:

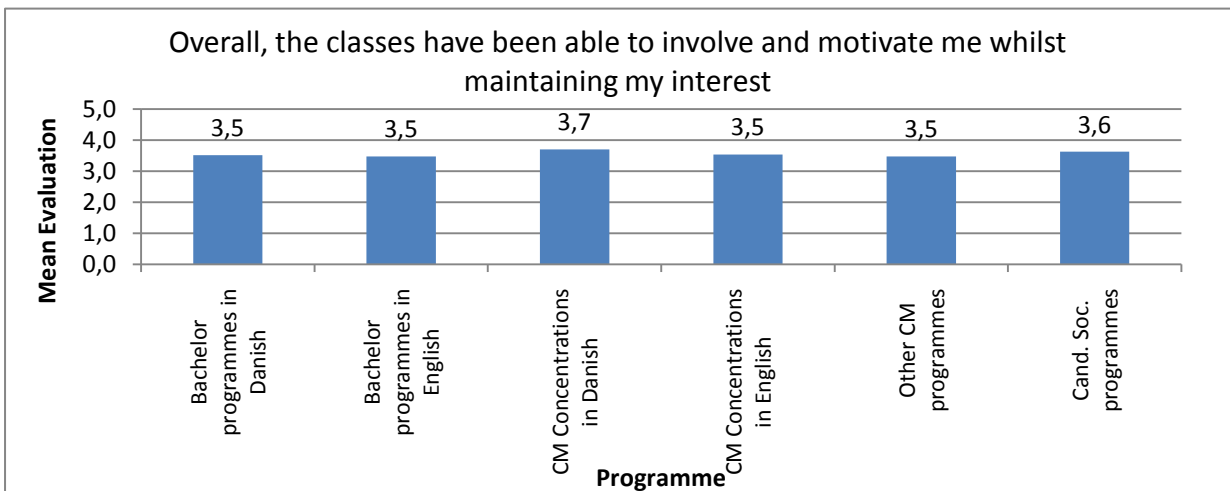
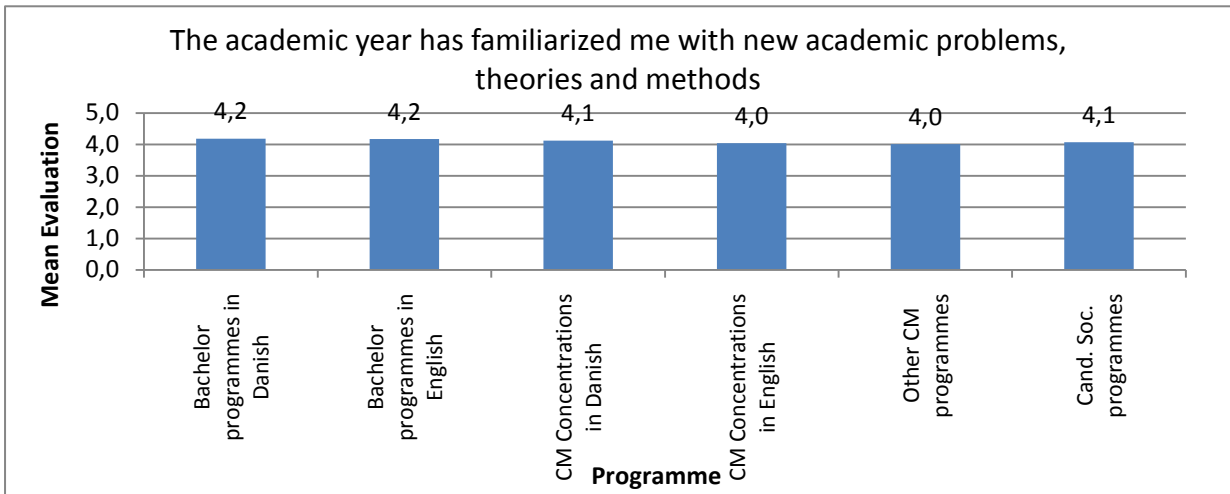
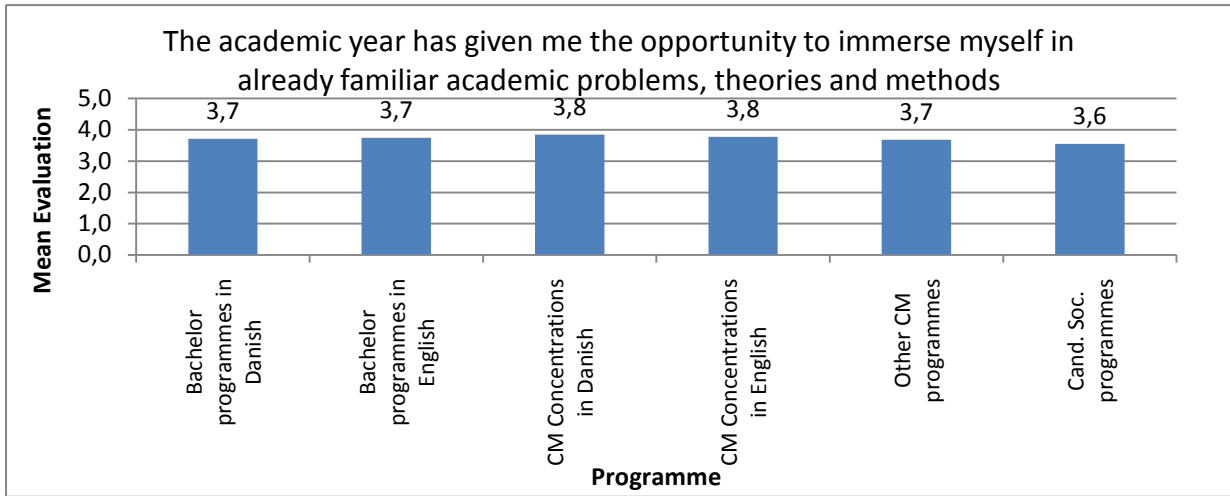
1= "Completely disagree"; 2= "Mostly disagree"; 3= "Neither agree nor disagree"; 4= "Mostly agree"; 5= "Completely agree"

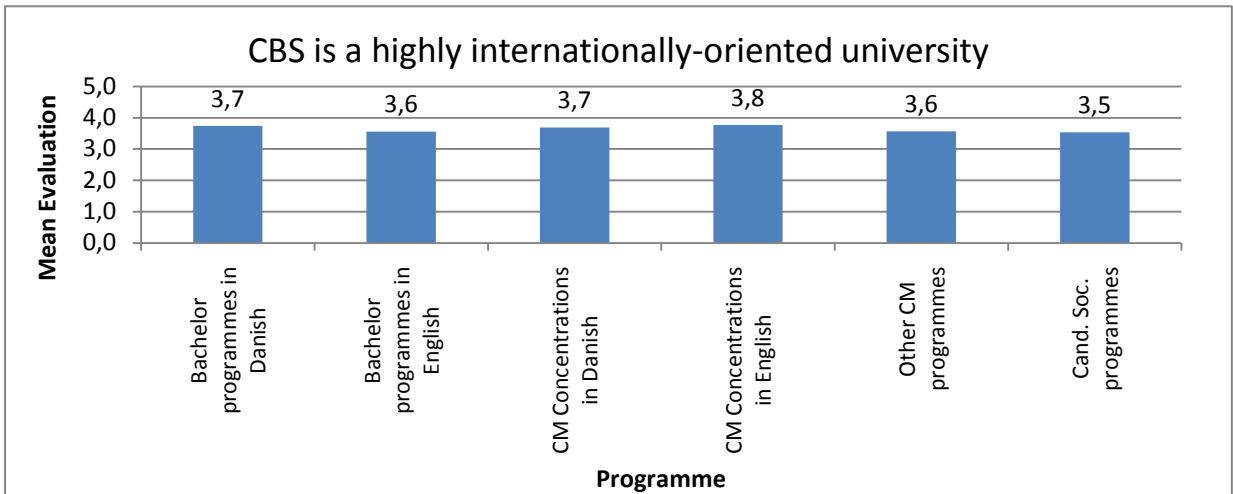
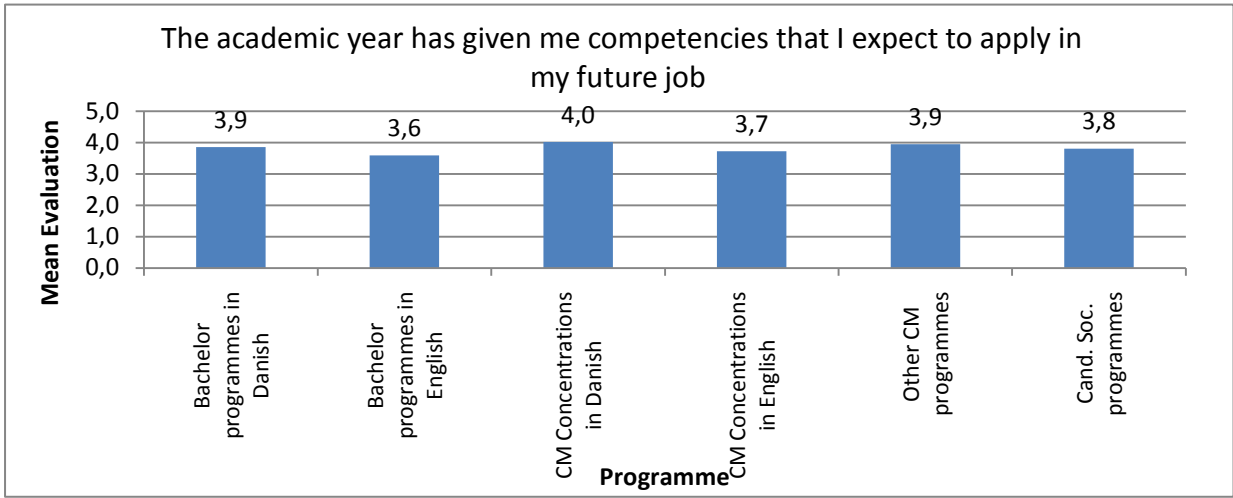
Figure 1.1 Evaluation. Selected questions. All programmes at CBS











2. Bachelor programmes in Danish

2.1. Evaluation of Bachelor Programmes in Danish

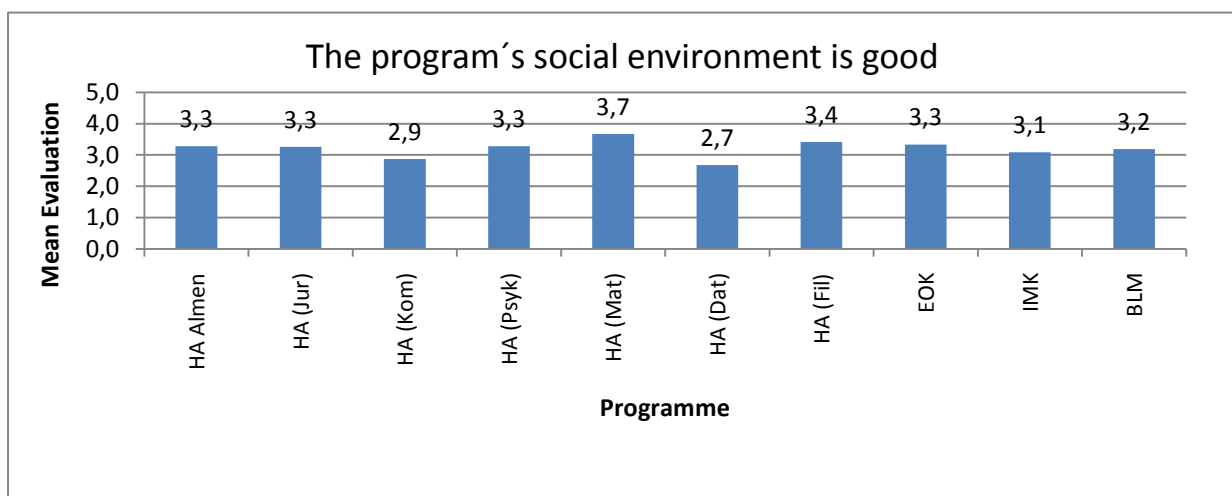
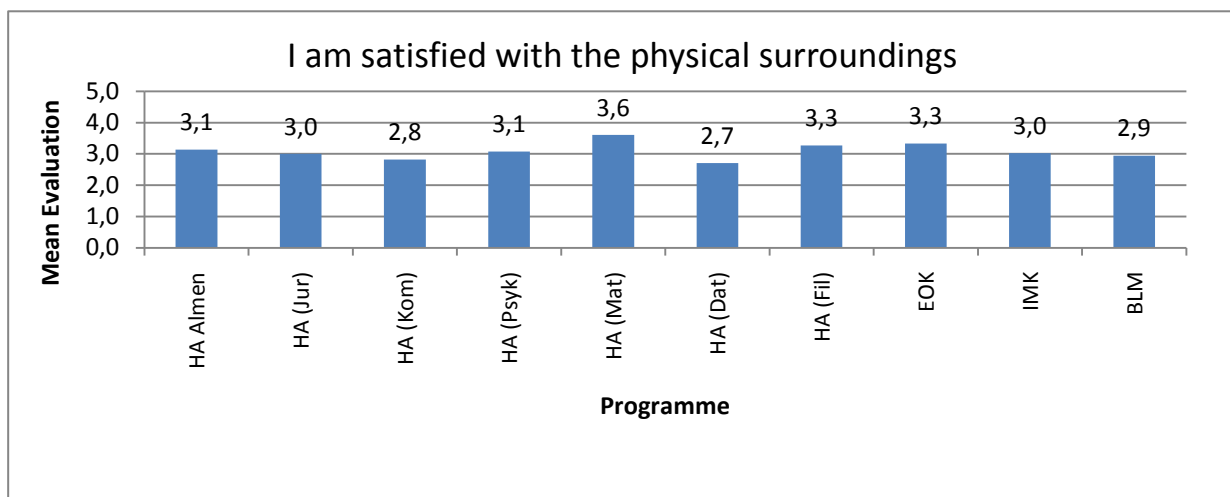
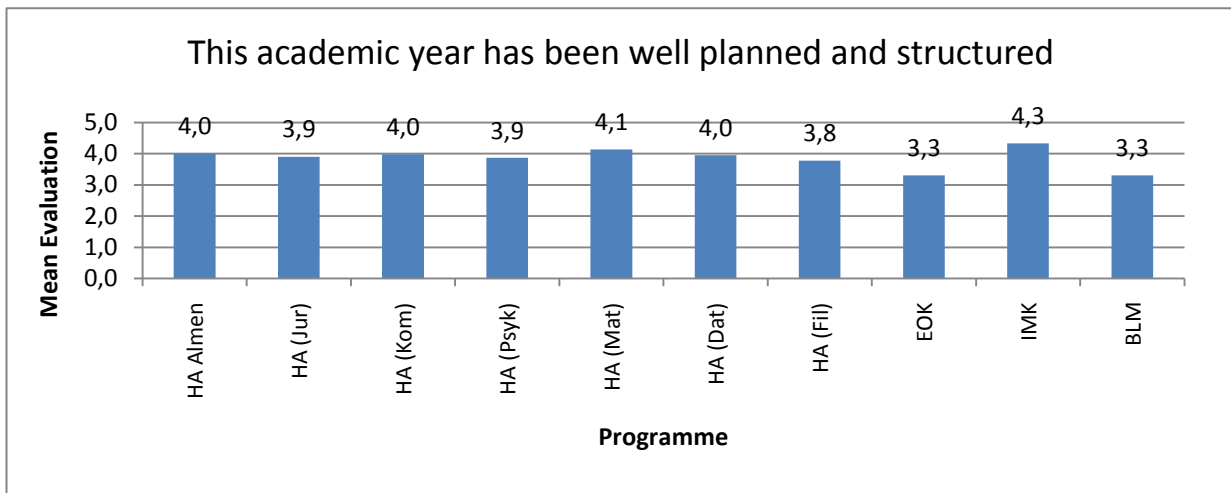
Table 2.1 Evaluation of Bachelor Programmes in Danish

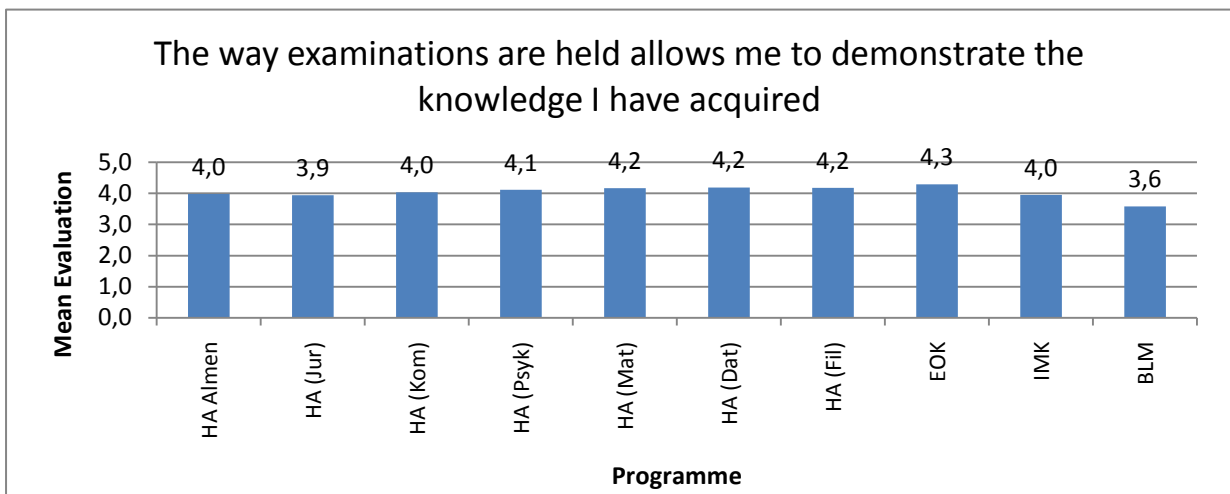
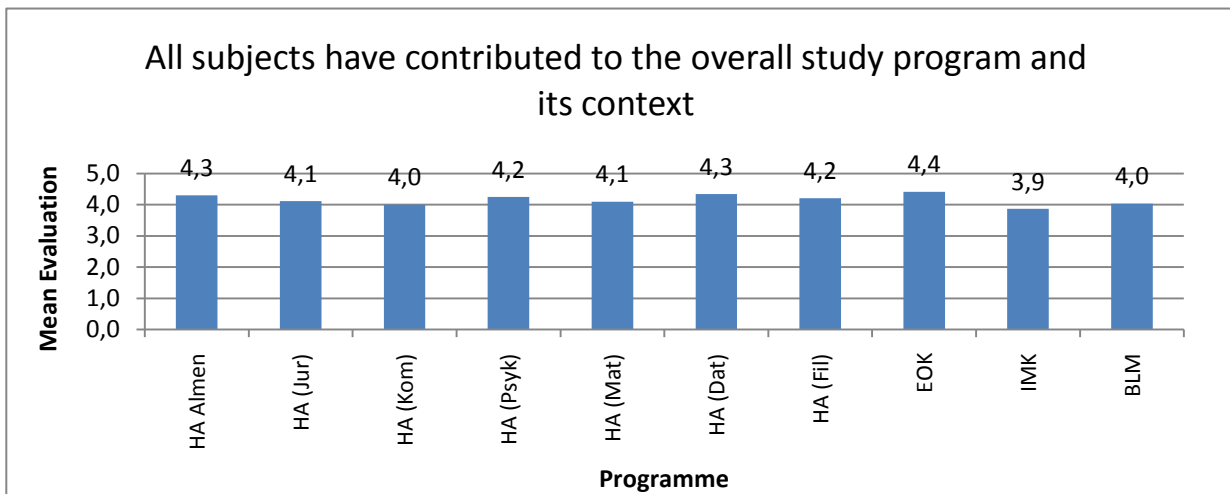
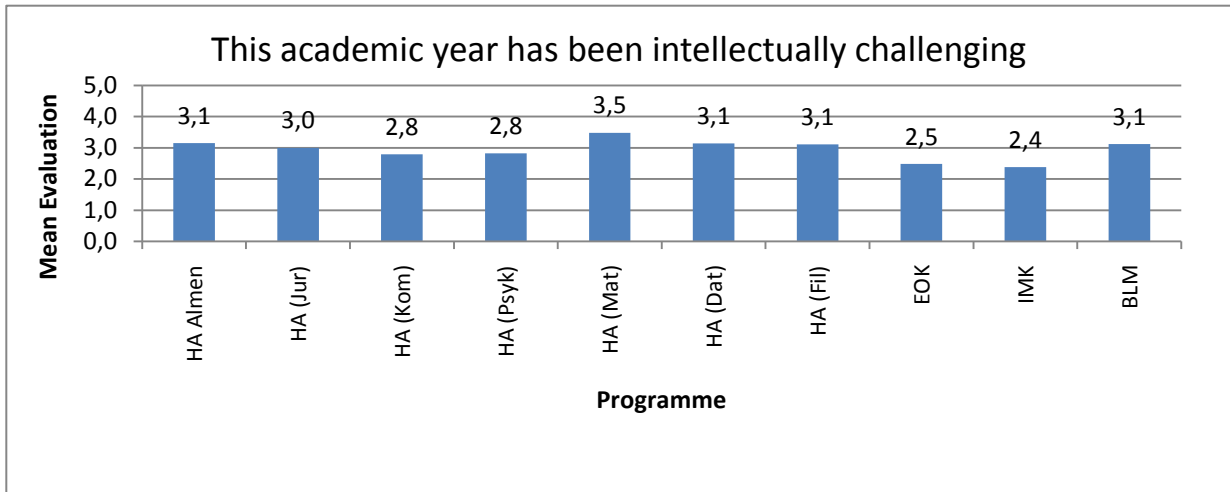
		Bachelor programmes in Danish										Total
		HA Almen	HA (Jur)	HA (Kom)	HA (Psyk)	HA (Mat)	HA (Dat)	HA (Fil)	EOK	IMK	BLM	
I highly recommend this study program to others	Mean	4,0	3,9	4,0	3,9	4,1	4,0	3,8	3,3	4,3	3,3	3,8
	No. of valid answers	443	134	104	89	81	43	63	23	45	309	1334
I am satisfied with the service provided by the administration	Mean	3,1	3,0	2,8	3,1	3,6	2,7	3,3	3,3	3,0	2,9	3,1
	No. of valid answers	432	132	99	89	78	44	63	24	45	303	1309
The necessary information about the program is generally easily accessible	Mean	3,3	3,3	2,9	3,3	3,7	2,7	3,4	3,3	3,1	3,2	3,2
	No. of valid answers	434	131	101	88	81	44	63	24	45	302	1313
This academic year has been well planned and structured	Mean	3,1	3,0	2,8	2,8	3,5	3,1	3,1	2,5	2,4	3,1	3,1
	No. of valid answers	435	133	99	89	81	44	63	23	45	300	1312
I am satisfied with the physical surroundings	Mean	4,3	4,1	4,0	4,2	4,1	4,3	4,2	4,4	3,9	4,0	4,2
	No. of valid answers	435	133	101	89	80	44	63	24	45	304	1318
The program's social environment is good	Mean	4,0	3,9	4,0	4,1	4,2	4,2	4,2	4,3	4,0	3,6	3,9
	No. of valid answers	433	130	101	89	81	43	63	24	45	303	1312
This academic year has been intellectually challenging	Mean	4,2	4,4	4,1	4,1	4,5	4,1	4,2	4,1	4,2	3,9	4,1
	No. of valid answers	426	129	97	88	79	43	63	24	44	302	1295
All subjects have contributed to the overall study program and its context	Mean	3,8	4,0	3,8	3,7	3,7	3,9	3,5	2,9	3,8	3,3	3,6
	No. of valid answers	425	129	95	87	79	43	63	24	44	302	1291
The way examinations are held allows me to demonstrate the knowledge I have acquired	Mean	3,6	3,5	3,7	3,6	3,6	3,8	3,6	3,5	3,8	3,3	3,5
	No. of valid answers	425	130	96	84	79	43	63	24	43	303	1290
The academic year has given me the opportunity to immerse myself in already familiar academic problems, theories and methods	Mean	3,7	3,7	4,0	3,8	3,6	4,2	3,7	3,7	3,8	3,6	3,7
	No. of valid answers	418	129	94	89	76	43	63	23	42	300	1277
The academic year has familiarized me with new academic problems, theories and methods	Mean	4,3	4,4	4,2	4,3	4,4	4,3	4,0	4,4	4,4	3,9	4,2
	No. of valid answers	426	131	96	89	79	43	63	24	44	302	1297
Overall, the classes have been able to involve and motivate me whilst maintaining my interest	Mean	3,5	3,7	3,7	3,5	3,5	3,6	3,5	3,5	3,8	3,3	3,5
	No. of valid answers	426	130	95	89	79	43	63	24	44	303	1296
The academic year has given me competencies that I expect to apply in my future job	Mean	3,9	4,2	3,9	4,0	4,0	4,1	3,5	3,6	4,3	3,5	3,9
	No. of valid answers	421	127	93	88	76	41	60	23	42	296	1267
CBS is a highly internationally-oriented university	Mean	3,7	3,9	3,8	3,7	3,8	3,7	3,7	4,0	3,8	3,7	3,7
	No. of valid answers	408	125	98	83	76	38	62	24	43	298	1255
Population		1443	429	369	339	249	167	239	65	168	1050	

Values for calculating means:

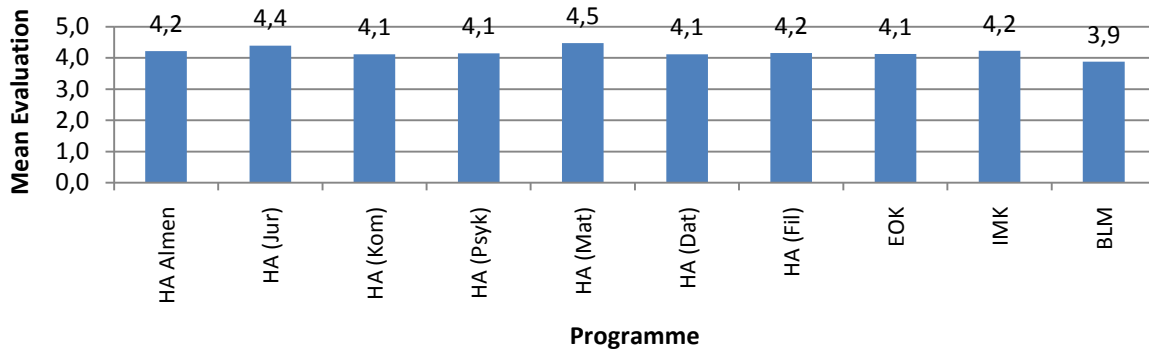
1= "Completely disagree"; 2= "Mostly disagree"; 3= "Neither agree nor disagree"; 4= "Mostly agree"; 5= "Completely agree"

Figure 2.1 Evaluation Selected questions. Bachelor Programmes in Danish

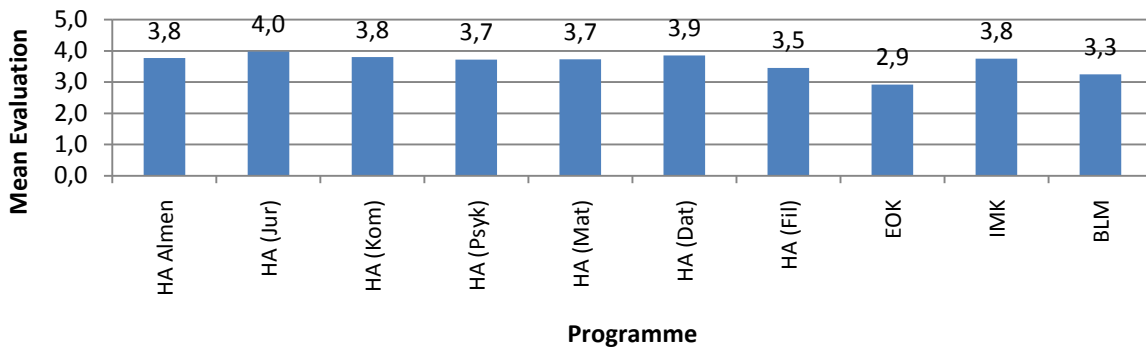




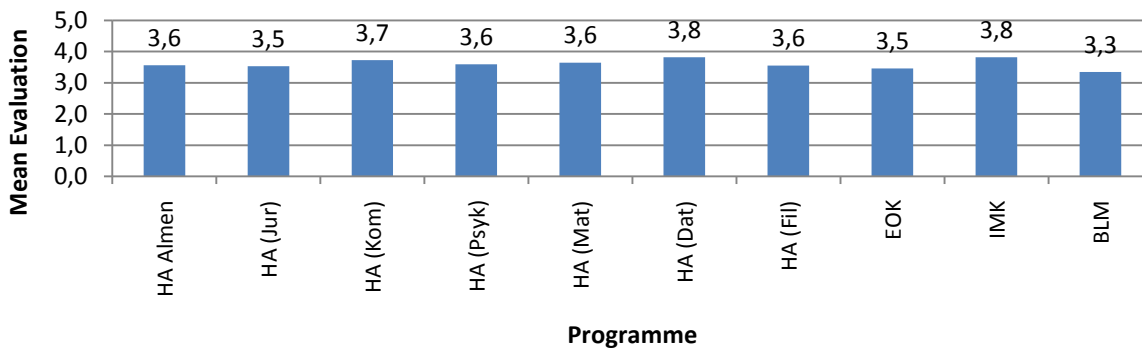
The academic year has given me the opportunity to immerse myself in already familiar academic problems, theories and methods



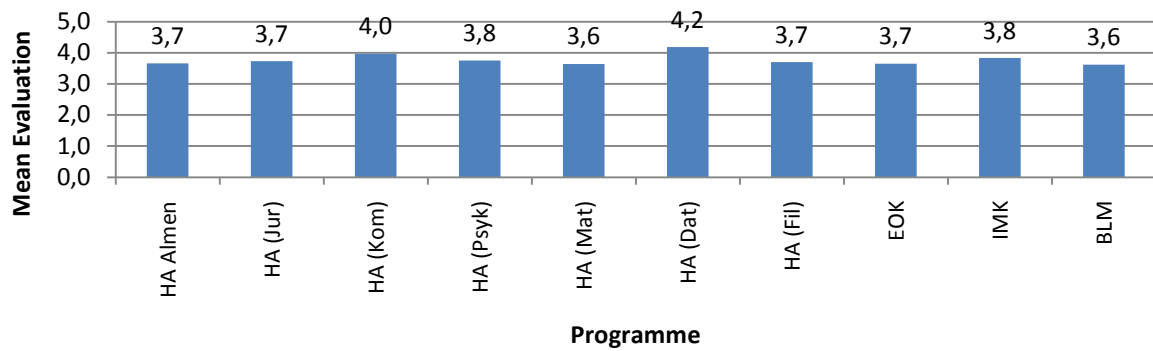
The academic year has familiarized me with new academic problems, theories and methods



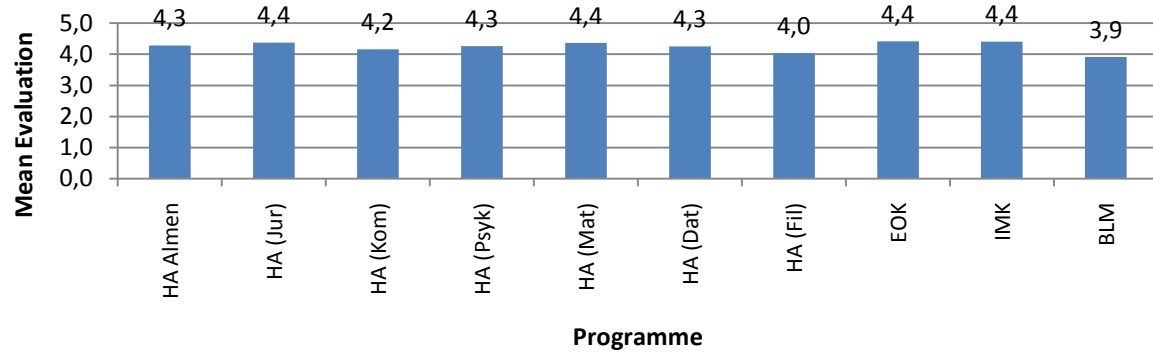
Overall, the classes have been able to involve and motivate me whilst maintaining my interest



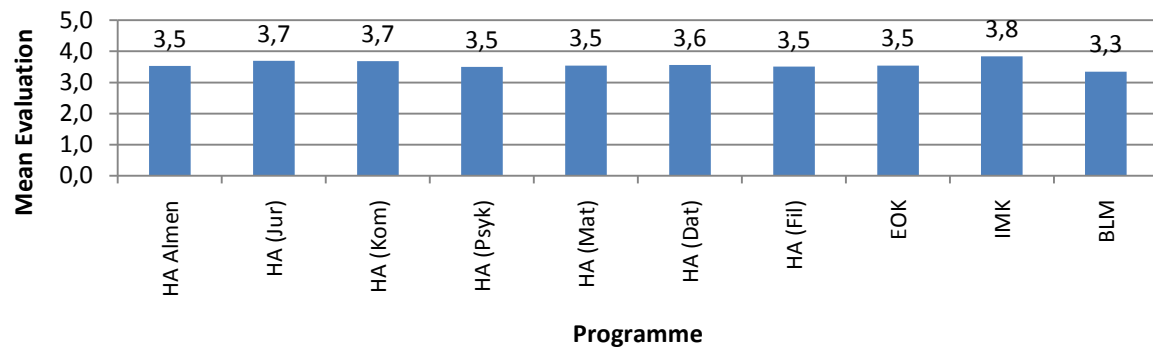
The academic year has given me the opportunity to immerse myself in already familiar academic problems, theories and methods



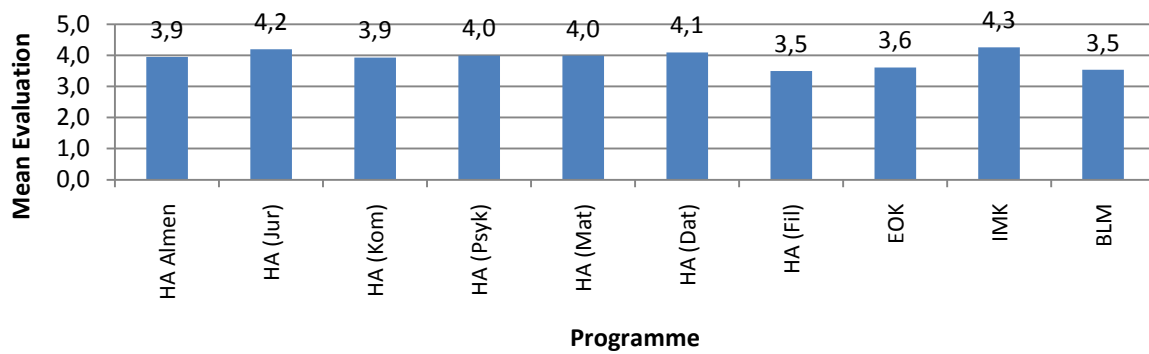
The academic year has familiarized me with new academic problems, theories and methods



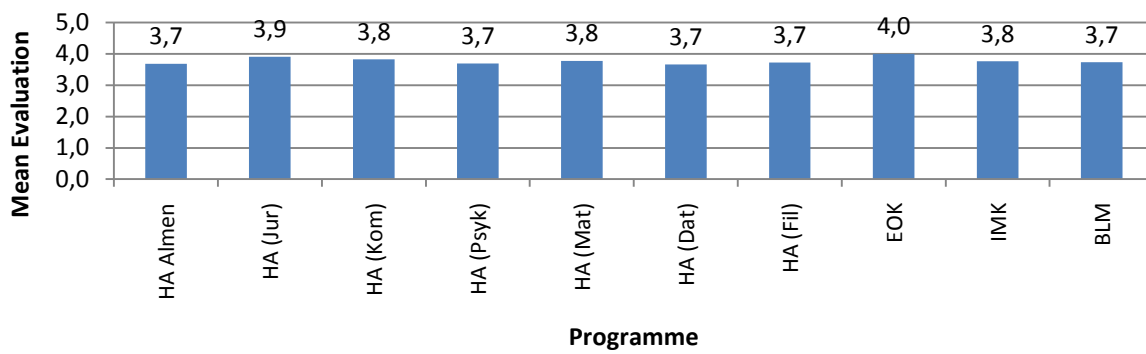
Overall, the classes have been able to involve and motivate me whilst maintaining my interest



The academic year has given me competencies that I expect to apply in my future job



CBS is a highly internationally-oriented university



3. Bachelor programmes in English

3.1. EVALUATION OF BACHELOR PROGRAMMES IN ENGLISH

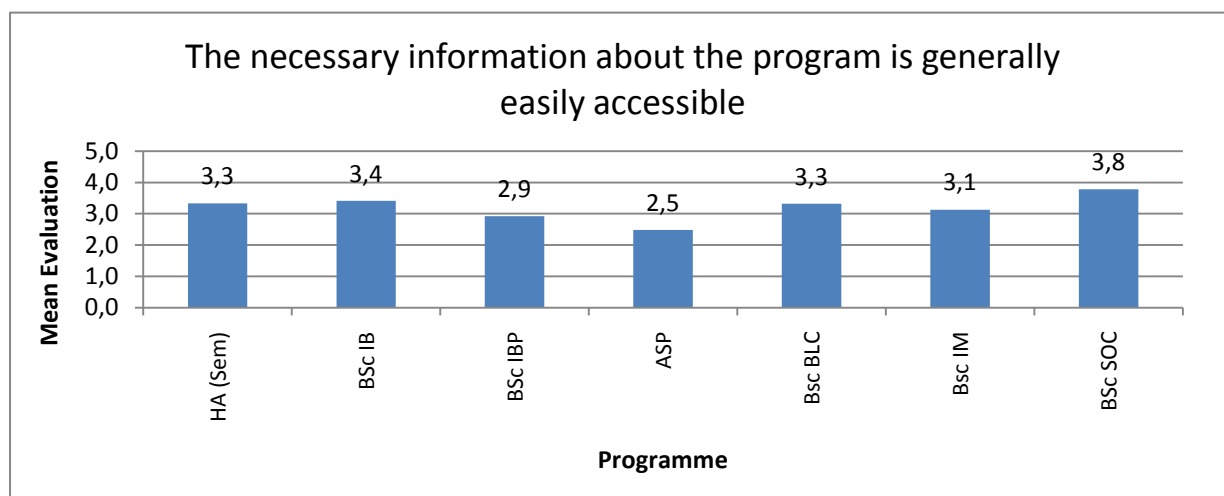
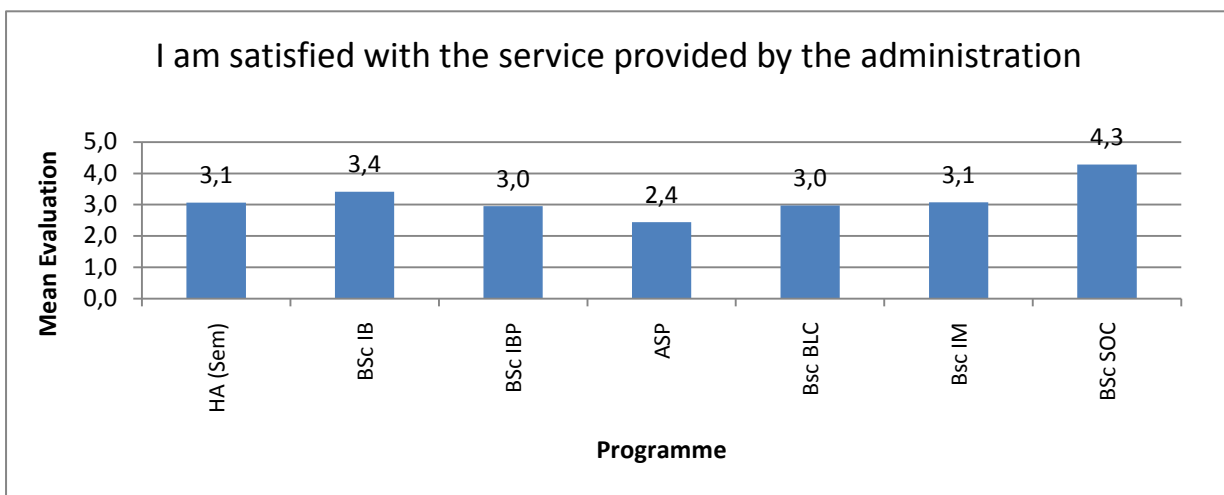
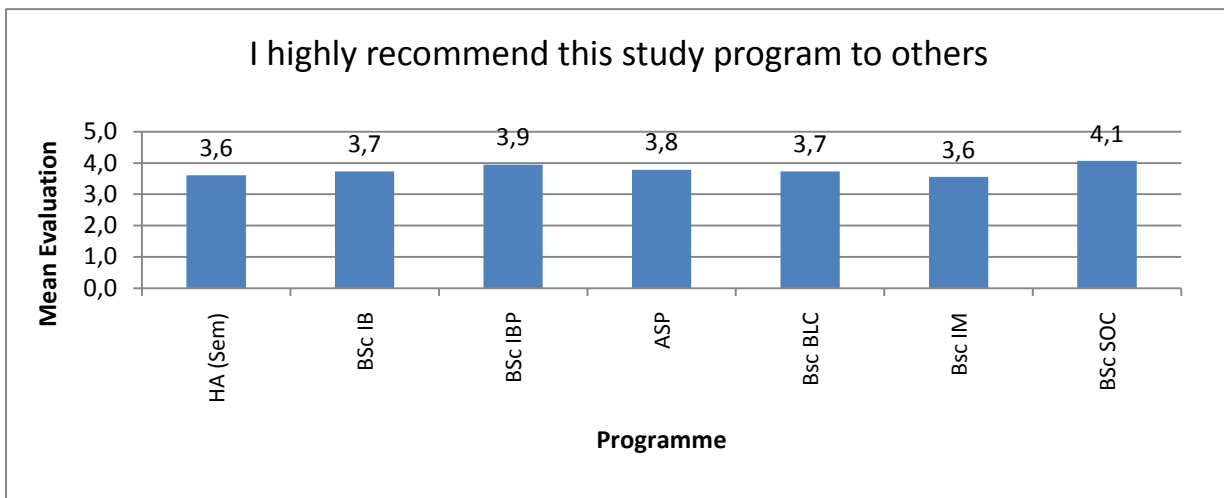
Table 3.1 Evaluation of Bachelor Programmes in English

		Bachelor programmes in English							
		HA (Sem)	BSc IB	BSc IBP	ASP	Bsc BLC	Bsc IM	BSc SOC	Total
I highly recommend this study program to others	Mean	3,6	3,7	3,9	3,8	3,7	3,6	4,1	3,8
	No. of valid answers	78	86	105	28	124	52	15	488
I am satisfied with the service provided by the administration	Mean	3,1	3,4	3,0	2,4	3,0	3,1	4,3	3,1
	No. of valid answers	75	83	101	27	122	54	14	476
The necessary information about the program is generally easily accessible	Mean	3,3	3,4	2,9	2,5	3,3	3,1	3,8	3,2
	No. of valid answers	76	83	101	27	123	54	14	478
This academic year has been well planned and structured	Mean	3,1	3,7	3,2	2,8	3,0	3,1	3,5	3,2
	No. of valid answers	76	84	101	27	122	54	14	478
I am satisfied with the physical surroundings	Mean	4,3	4,2	4,1	4,1	4,2	4,3	4,3	4,2
	No. of valid answers	76	85	101	27	122	54	14	479
The program's social environment is good	Mean	4,0	3,9	3,8	3,7	4,1	3,9	4,8	3,9
	No. of valid answers	75	84	101	27	122	55	13	477
This academic year has been intellectually challenging	Mean	4,0	4,2	4,3	4,2	4,2	3,9	4,7	4,2
	No. of valid answers	75	84	101	27	121	53	14	475
All subjects have contributed to the overall study program and its context	Mean	3,5	3,6	4,0	4,0	3,9	3,6	4,2	3,8
	No. of valid answers	75	84	100	27	121	54	14	475
The way examinations are held allows me to demonstrate the knowledge I have acquired	Mean	3,5	3,2	3,4	3,7	3,5	3,2	3,9	3,4
	No. of valid answers	75	85	101	26	121	54	14	476
The academic year has given me the opportunity to immerse myself in already familiar academic problems, theories and methods	Mean	3,8	3,5	3,8	4,0	3,8	3,8	3,9	3,7
	No. of valid answers	75	83	99	27	119	52	14	469
The academic year has familiarized me with new academic problems, theories and methods	Mean	4,1	4,1	4,2	4,1	4,2	4,1	4,4	4,2
	No. of valid answers	75	84	101	27	120	53	14	474
Overall, the classes have been able to involve and motivate me whilst maintaining my interest	Mean	3,3	3,5	3,5	3,7	3,5	3,3	4,0	3,5
	No. of valid answers	75	83	100	27	119	54	14	472
The academic year has given me competencies that I expect to apply in my future job	Mean	3,7	3,6	3,5	3,9	3,5	3,6	3,8	3,6
	No. of valid answers	71	85	97	25	117	51	13	459
CBS is a highly internationally-oriented university	Mean	3,5	3,5	3,6	3,4	3,8	3,5	3,4	3,6
	No. of valid answers	75	83	101	27	120	50	14	470
Population		206	236	274	116	362	168	52	

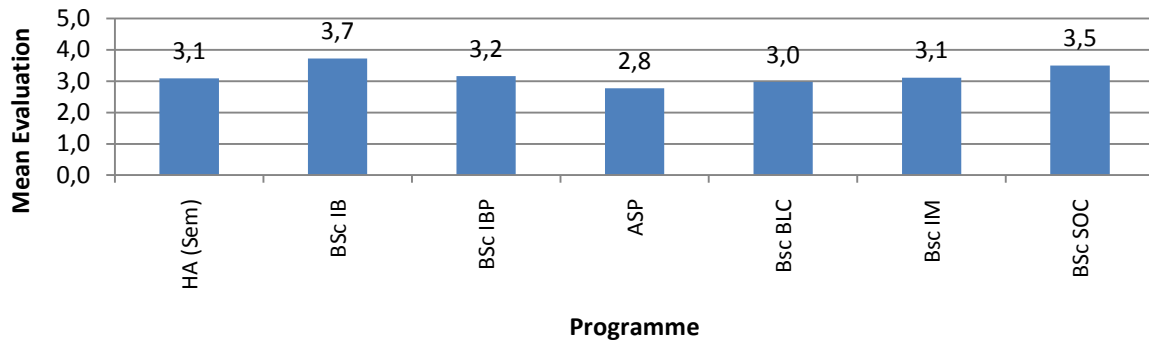
Values for calculating means:

1= "Completely disagree"; 2= "Mostly disagree"; 3= "Neither agree nor disagree"; 4= "Mostly agree"; 5= "Completely agree"

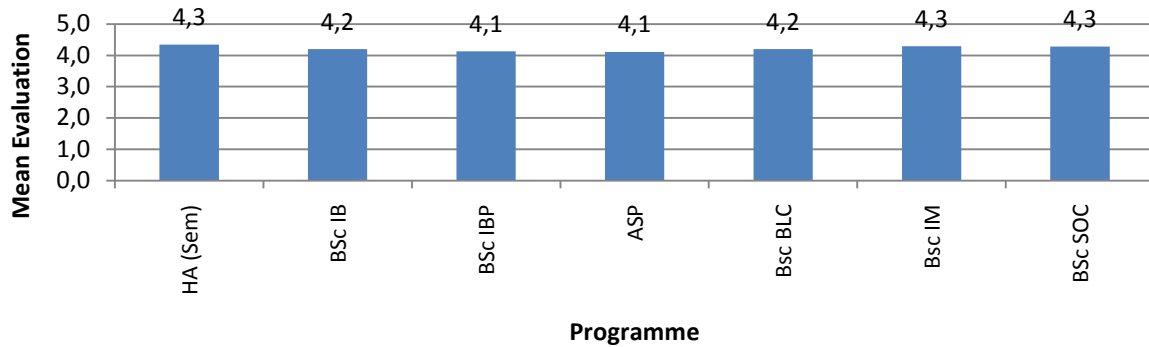
Figure 3.1 Evaluation Selected questions. Bachelor Programmes in English



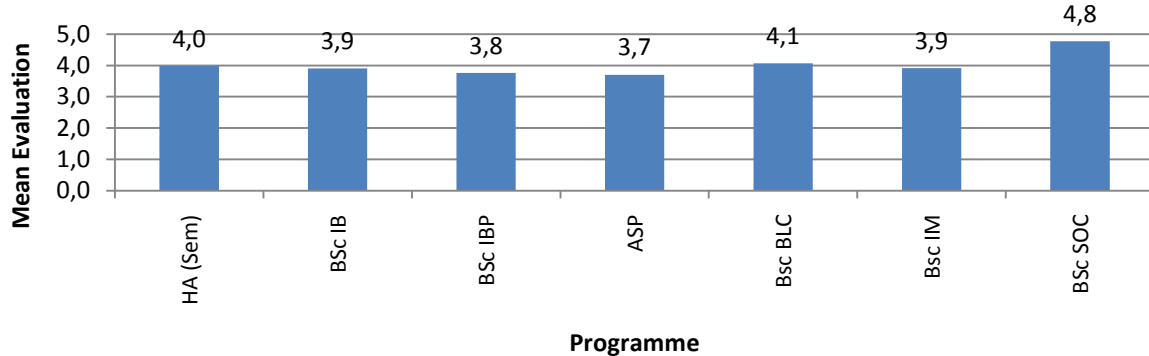
This academic year has been well planned and structured

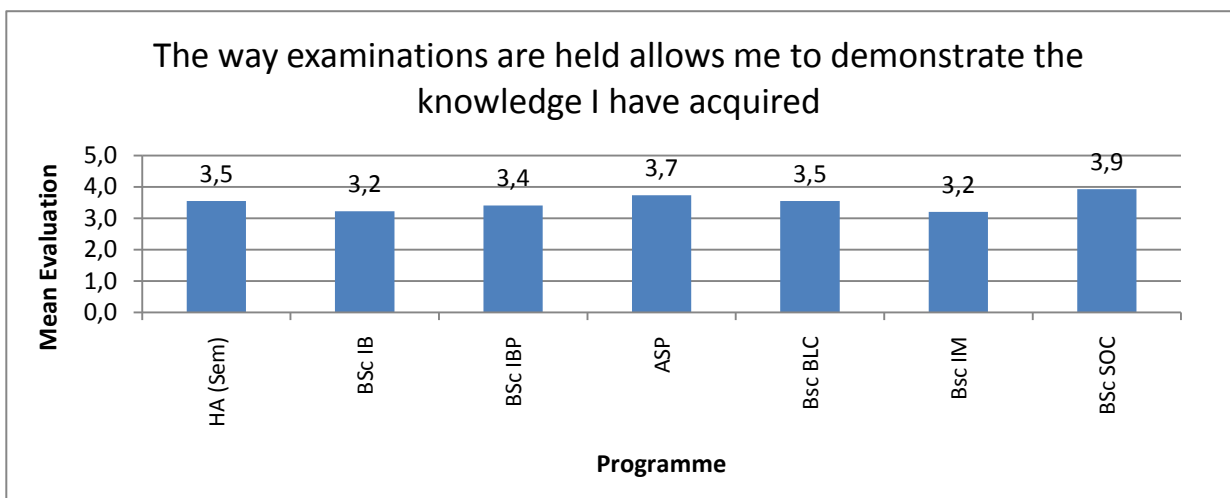
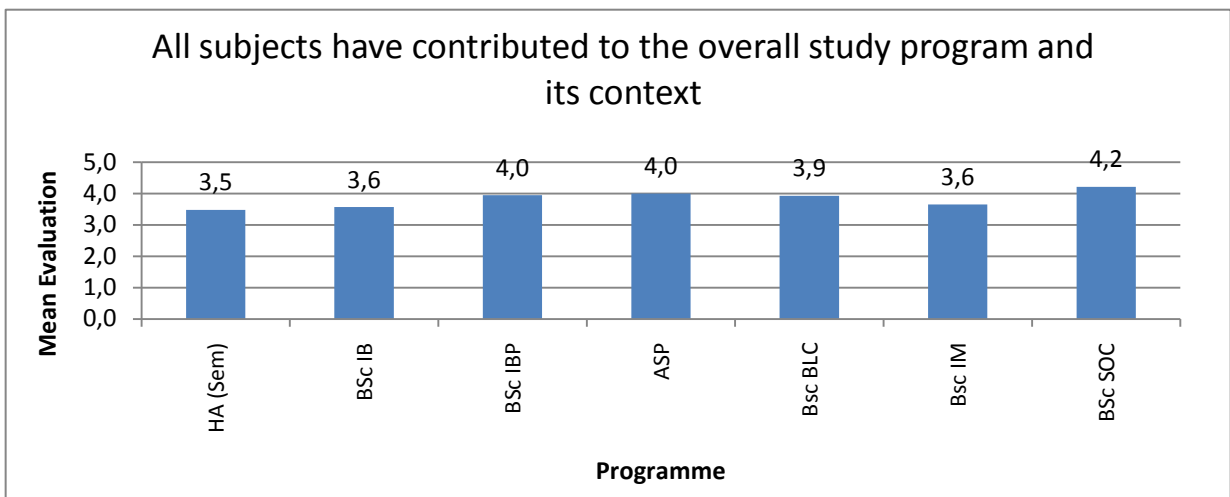
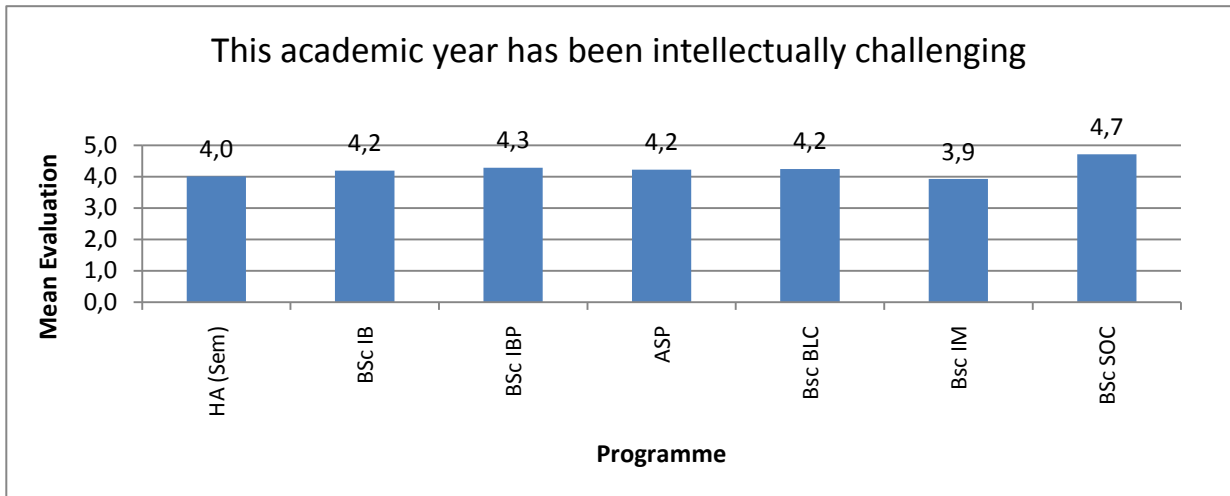


I am satisfied with the physical surroundings

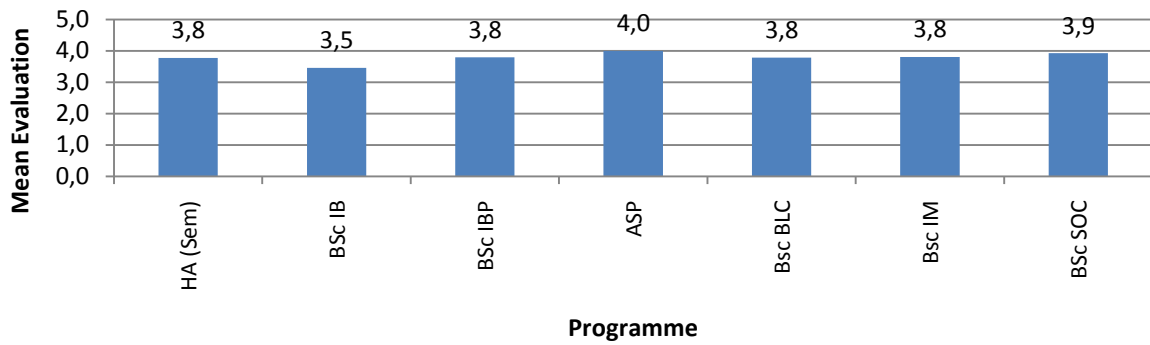


The program's social environment is good

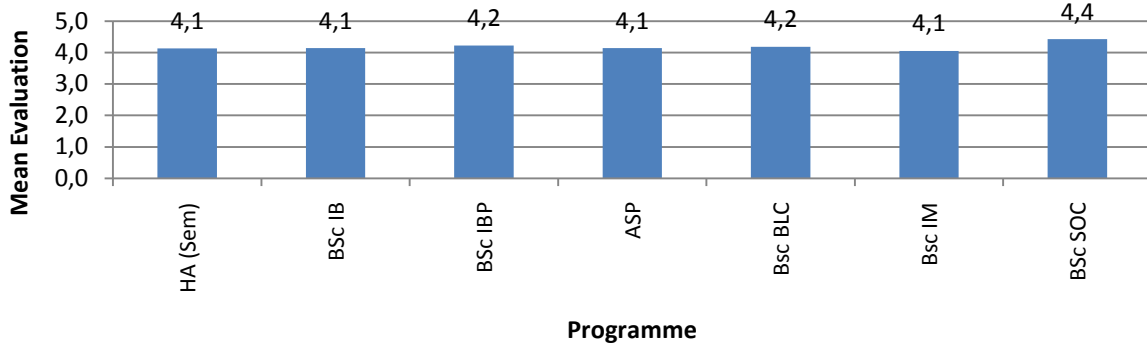




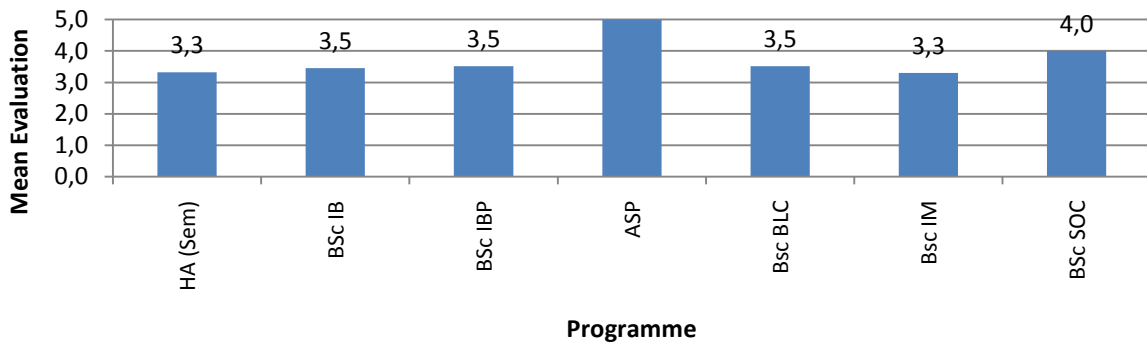
The academic year has given me the opportunity to immerse myself in already familiar academic problems, theories and methods

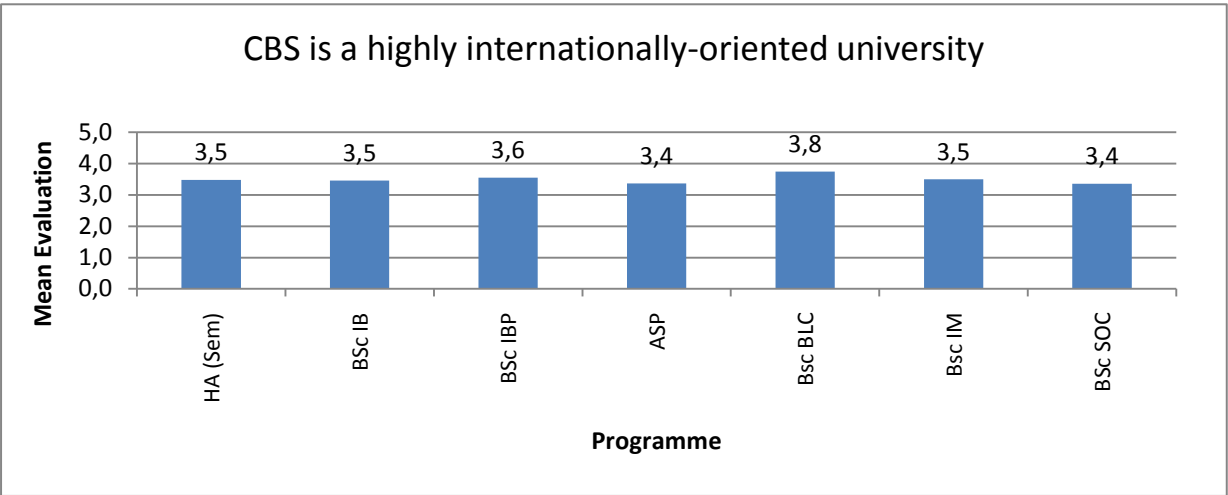
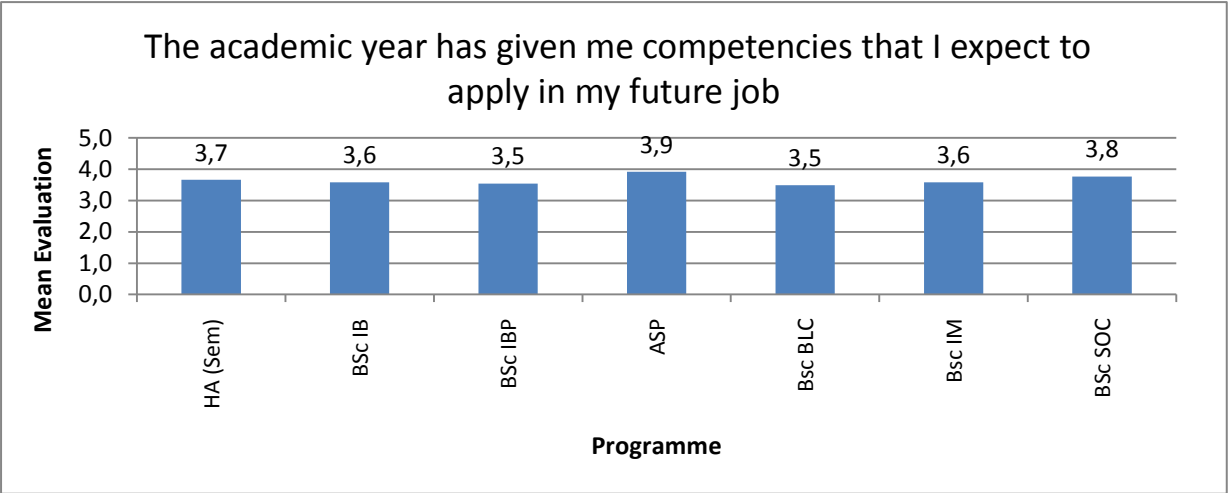


The academic year has familiarized me with new academic problems, theories and methods



Overall, the classes have been able to involve and motivate me whilst maintaining my interest





4. CM Concentrations in Danish

4.1. Evaluation of CM concentrations in Danish

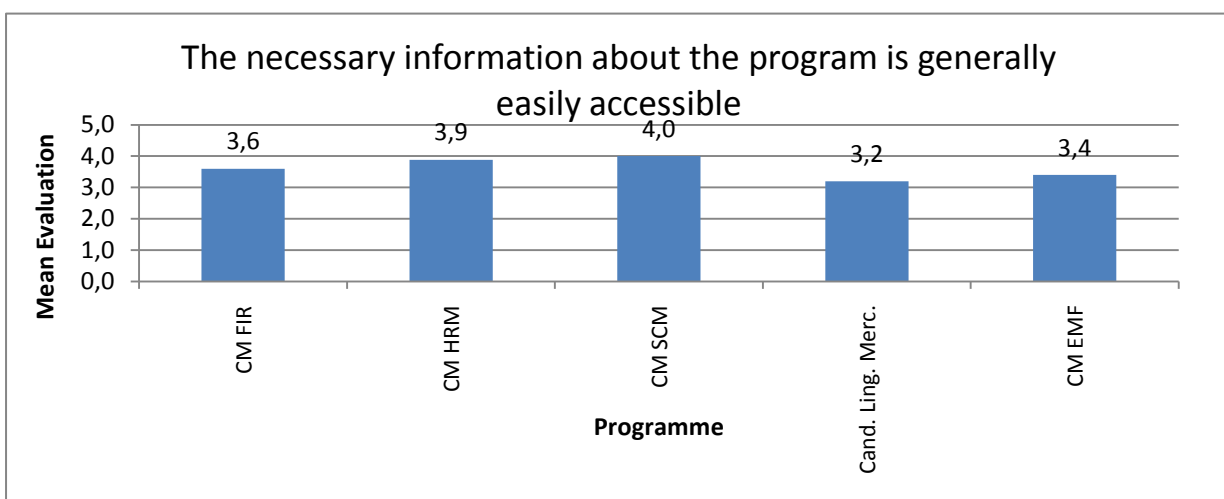
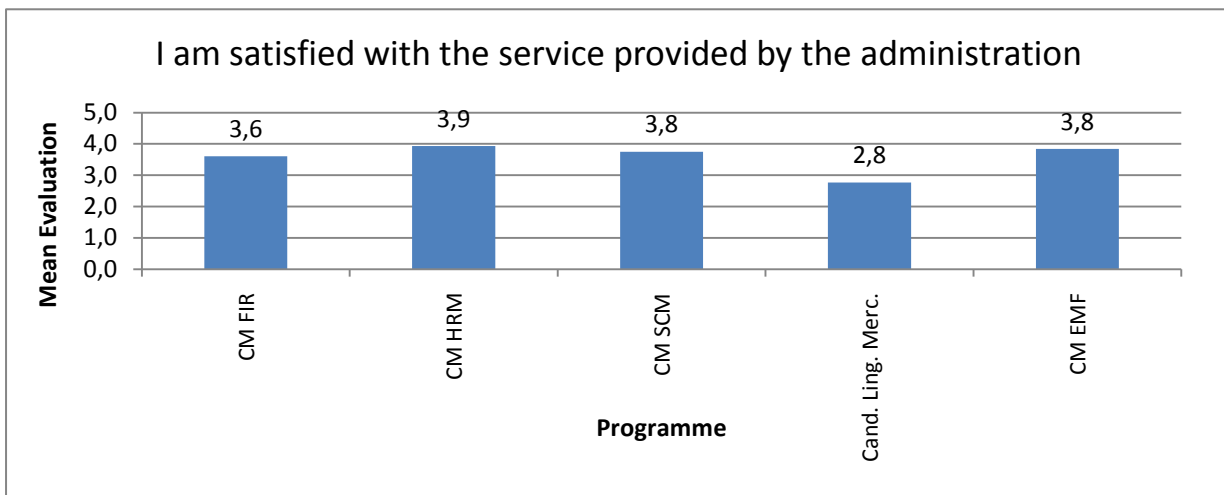
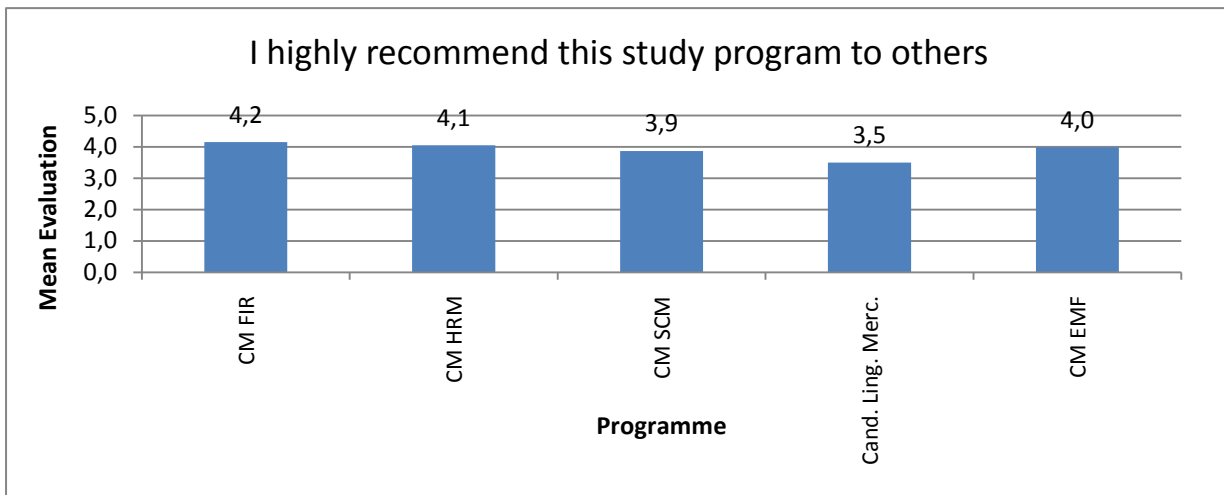
Table 4.1 Evaluation of CM concentrations in Danish

		CM Concentrations in Danish					Total
		CM FIR	CM HRM	CM SCM	Cand. Ling. Merc.	CM EMF	
I highly recommend this study program to others	Mean	4,2	4,1	3,9	3,5	4,0	3,8
	No. of valid answers	103	60	24	162	84	433
I am satisfied with the service provided by the administration	Mean	3,6	3,9	3,8	2,8	3,8	3,4
	No. of valid answers	98	61	24	158	81	422
The necessary information about the program is generally easily accessible	Mean	3,6	3,9	4,0	3,2	3,4	3,5
	No. of valid answers	97	61	24	158	83	423
This academic year has been well planned and structured	Mean	3,6	3,6	3,9	3,1	3,7	3,5
	No. of valid answers	95	58	24	152	79	408
I am satisfied with the physical surroundings	Mean	4,1	3,5	4,3	3,8	4,1	3,9
	No. of valid answers	100	60	24	157	82	423
The program's social environment is good	Mean	3,6	4,0	4,4	3,3	3,8	3,6
	No. of valid answers	94	58	23	150	81	406
This academic year has been intellectually challenging	Mean	4,5	4,0	4,2	4,0	3,9	4,1
	No. of valid answers	97	59	24	151	78	409
All subjects have contributed to the overall study program and its context	Mean	3,8	3,7	4,0	3,3	3,5	3,6
	No. of valid answers	95	58	24	139	77	393
The way examinations are held allows me to demonstrate the knowledge I have acquired	Mean	3,4	3,4	3,7	3,6	3,5	3,5
	No. of valid answers	94	58	24	144	77	397
The academic year has given me the opportunity to immerse myself in already familiar academic problems, theories and methods	Mean	4,0	3,8	3,8	3,7	3,9	3,8
	No. of valid answers	96	56	24	149	77	402
The academic year has familiarized me with new academic problems, theories and methods	Mean	4,3	4,1	4,3	4,0	4,0	4,1
	No. of valid answers	96	59	24	150	77	406
Overall, the classes have been able to involve and motivate me whilst maintaining my interest	Mean	3,8	3,9	4,0	3,4	3,9	3,7
	No. of valid answers	96	59	24	144	76	399
The academic year has given me competencies that I expect to apply in my future job	Mean	4,4	4,1	4,2	3,8	4,1	4,0
	No. of valid answers	97	60	24	148	76	405
CBS is a highly internationally-oriented university	Mean	3,7	3,8	3,5	3,7	3,7	3,7
	No. of valid answers	95	61	24	149	76	405
Population		307	169	55	565	293	

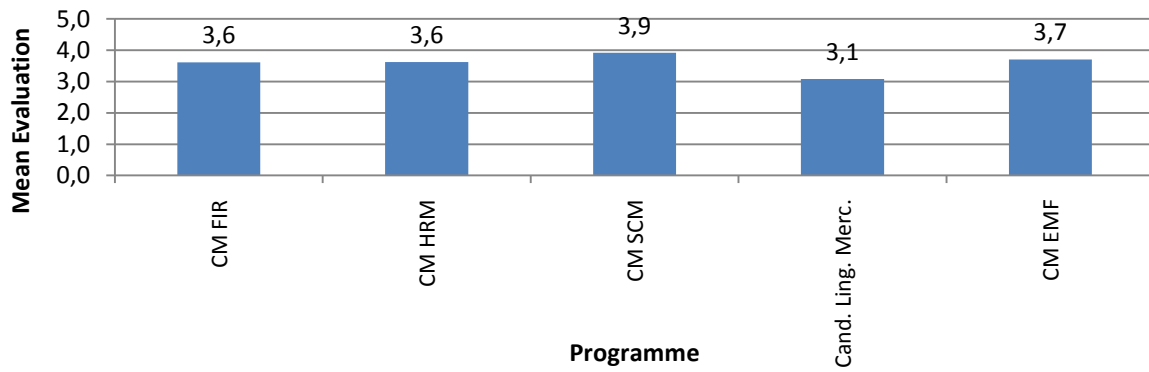
Values for calculating means:

1= "Completely disagree"; 2= "Mostly disagree"; 3= "Neither agree nor disagree"; 4= "Mostly agree"; 5= "Completely agree"

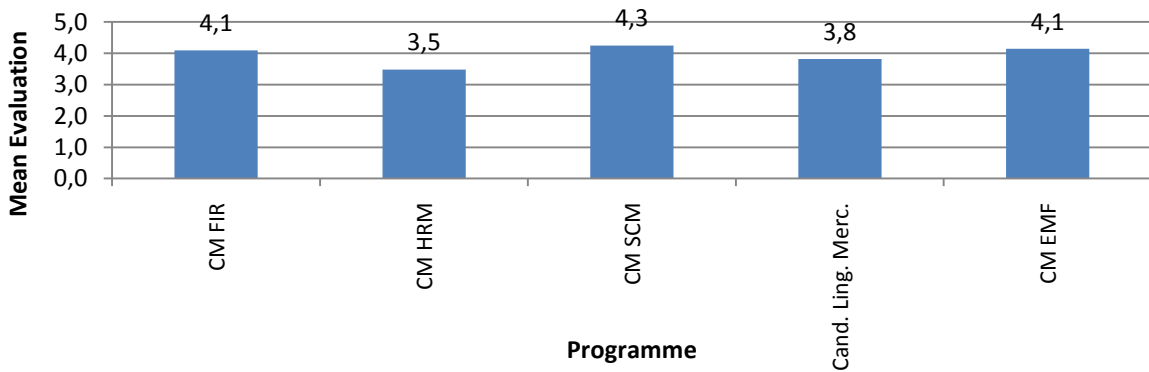
Figure 4.1 Evaluation Selected questions. CM concentrations in Danish



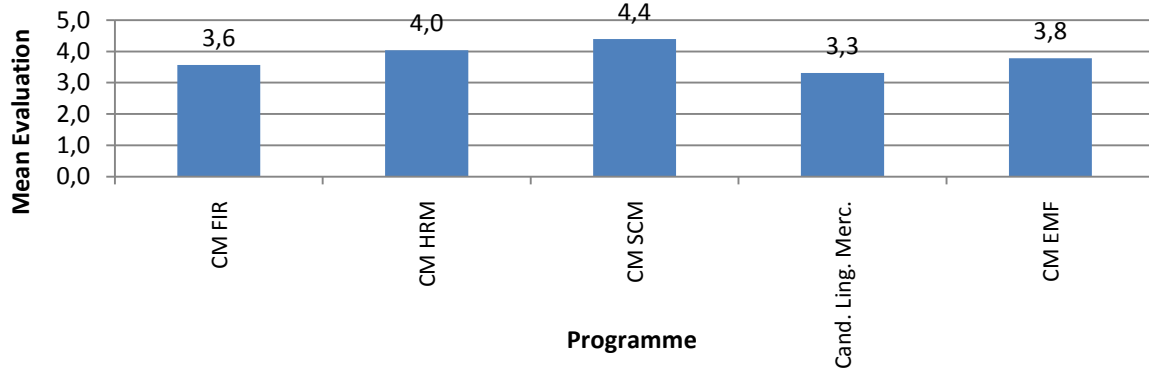
This academic year has been well planned and structured

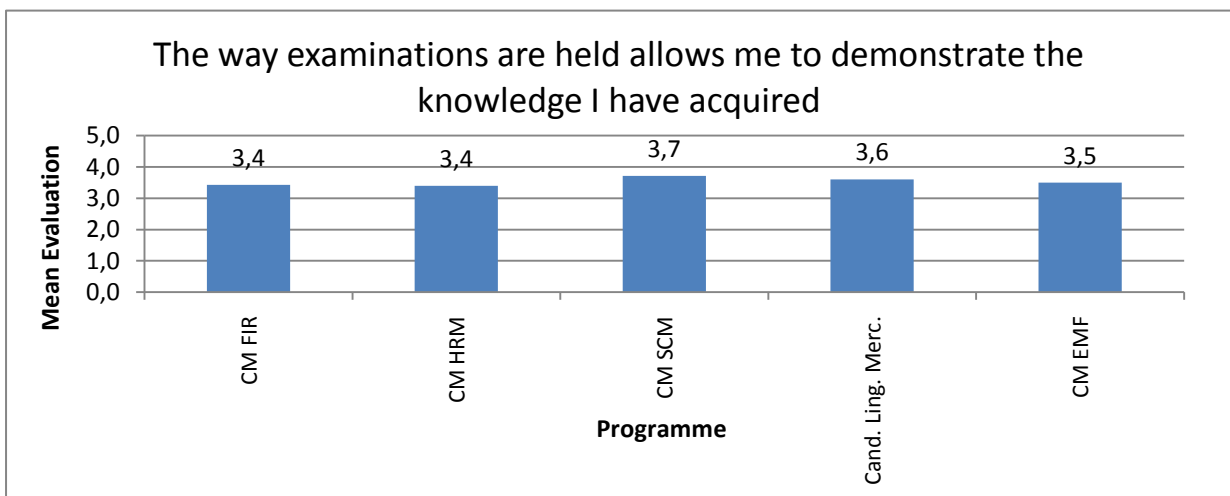
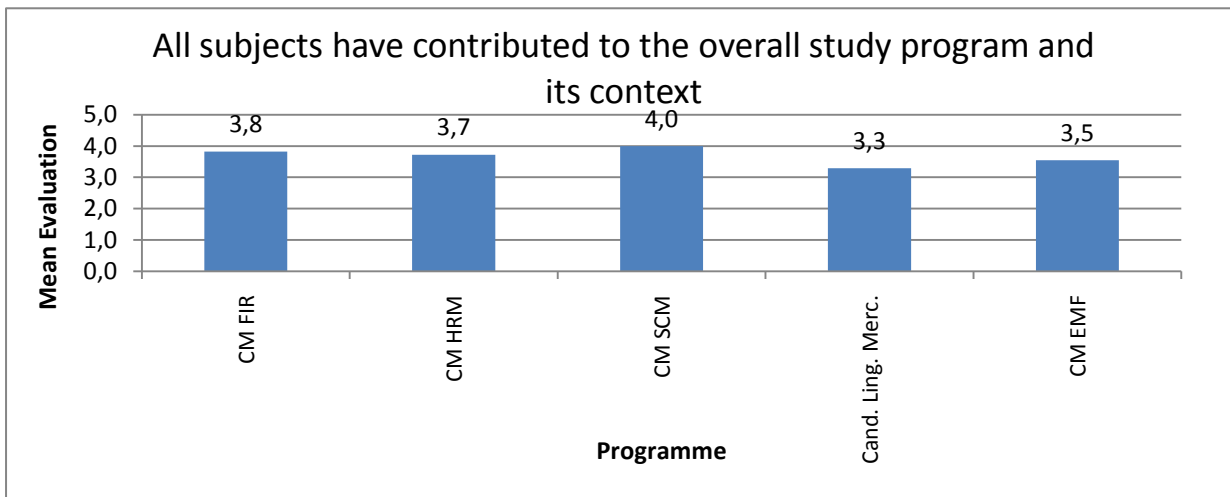
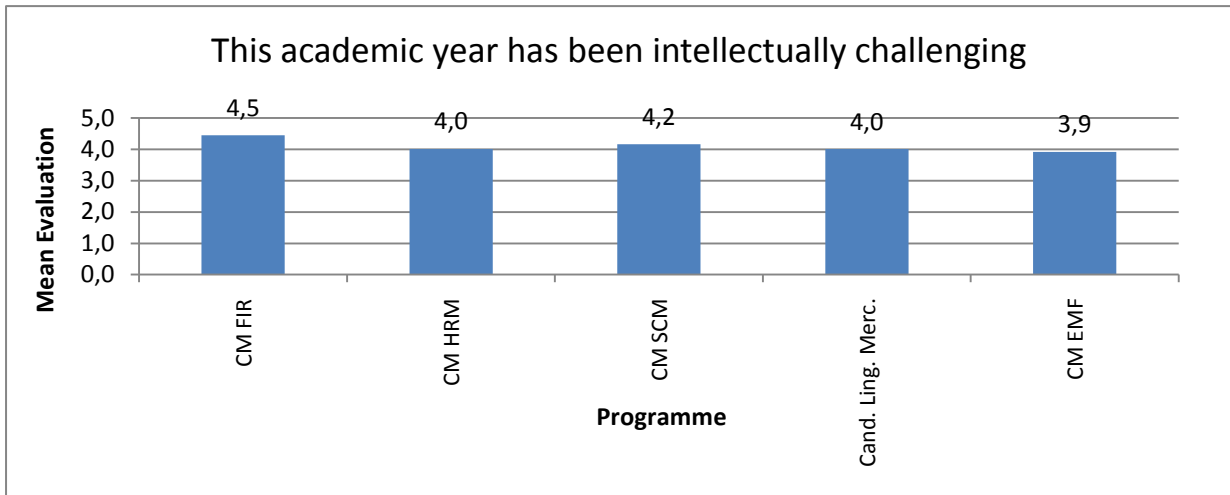


I am satisfied with the physical surroundings

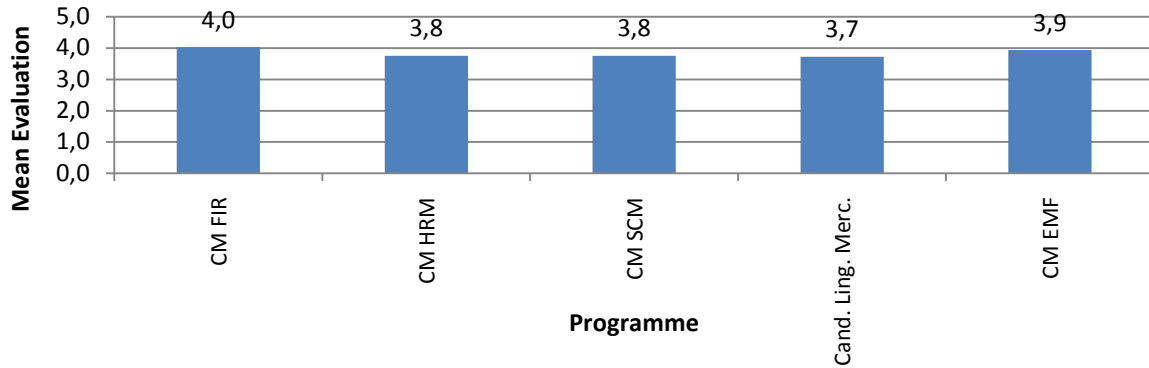


The program's social environment is good

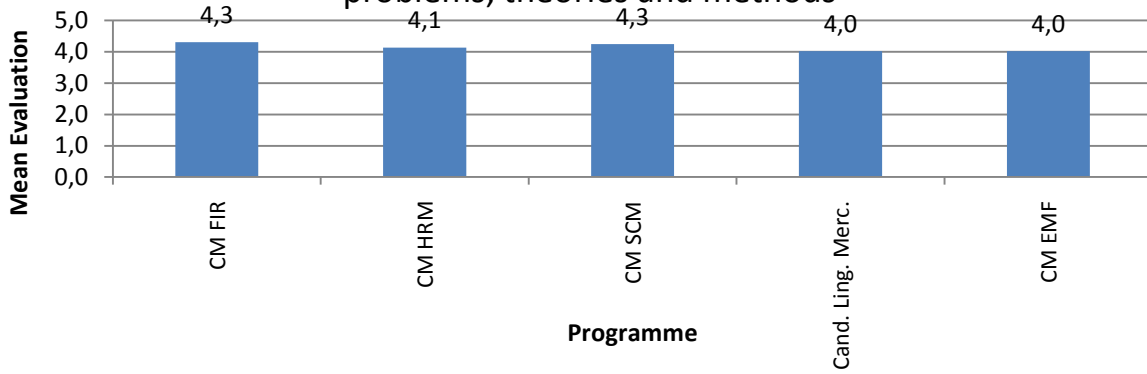




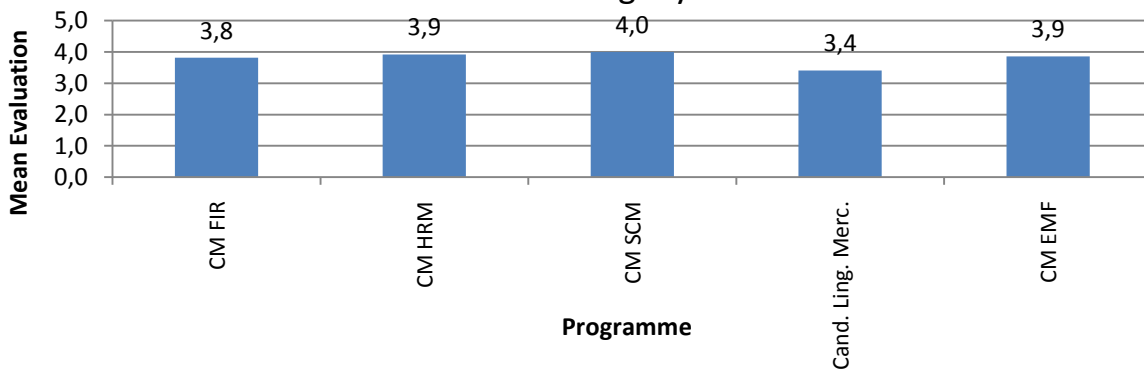
The academic year has given me the opportunity to immerse myself in already familiar academic problems, theories and methods

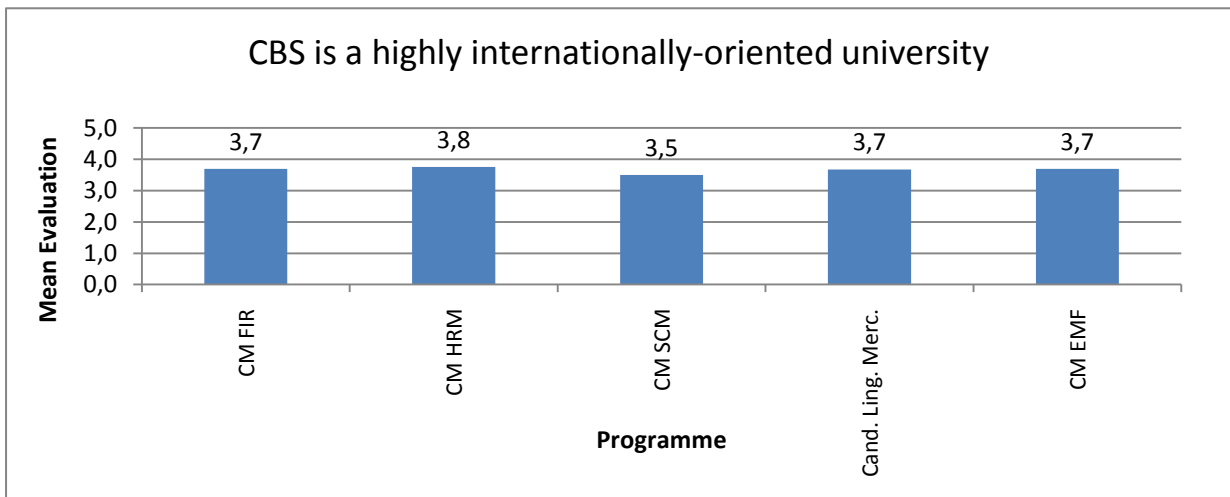
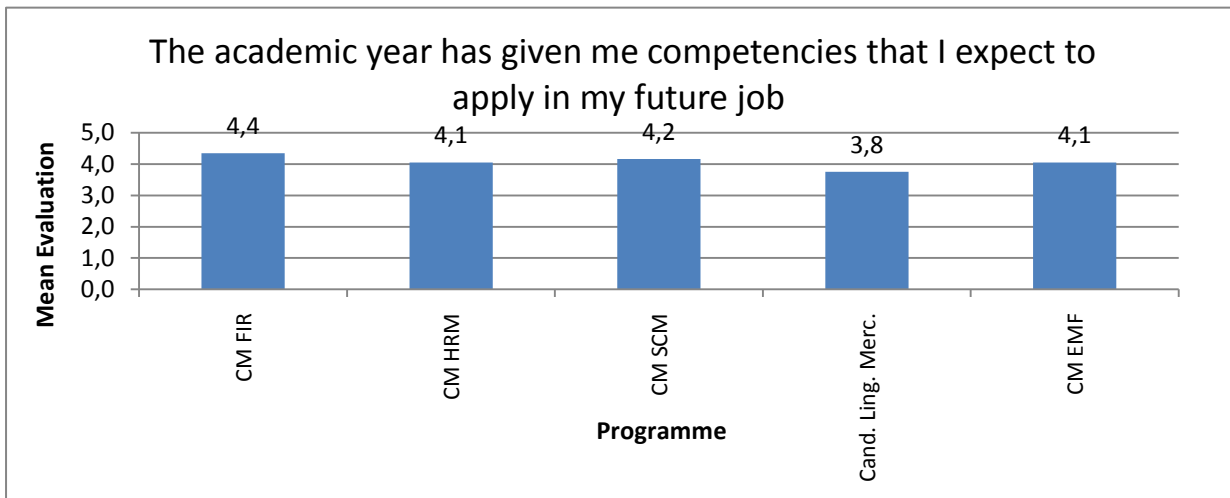


The academic year has familiarized me with new academic problems, theories and methods



Overall, the classes have been able to involve and motivate me whilst maintaining my interest





5. CM concentrations in English

5.1. Evaluation of CM concentrations in English

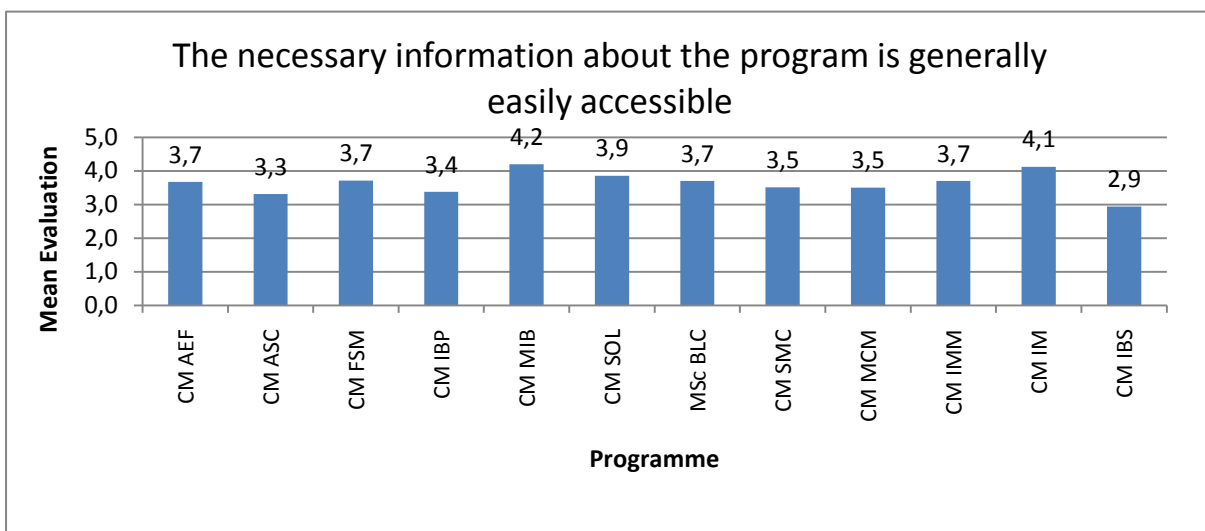
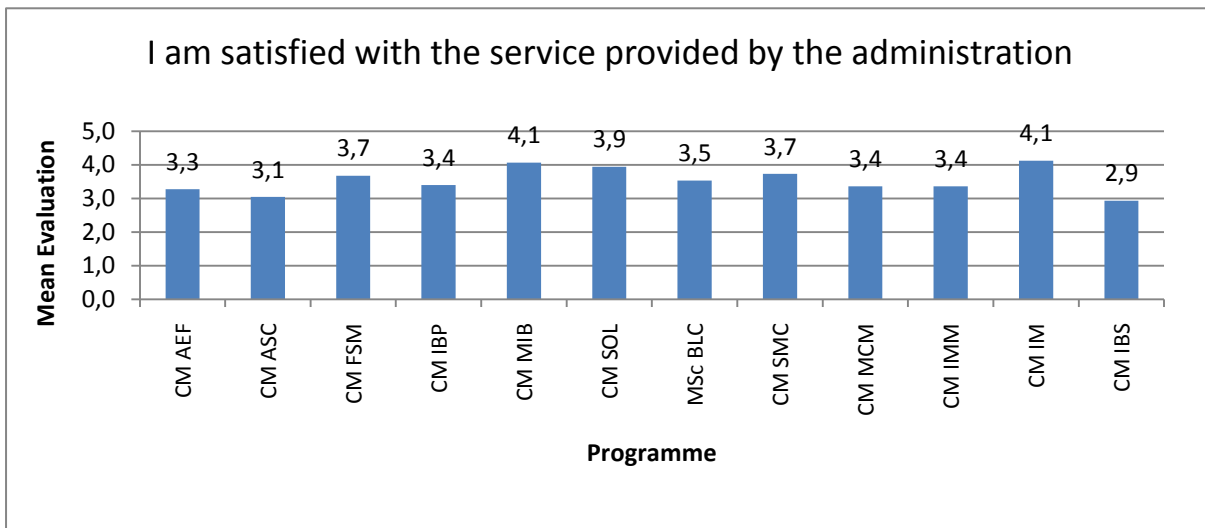
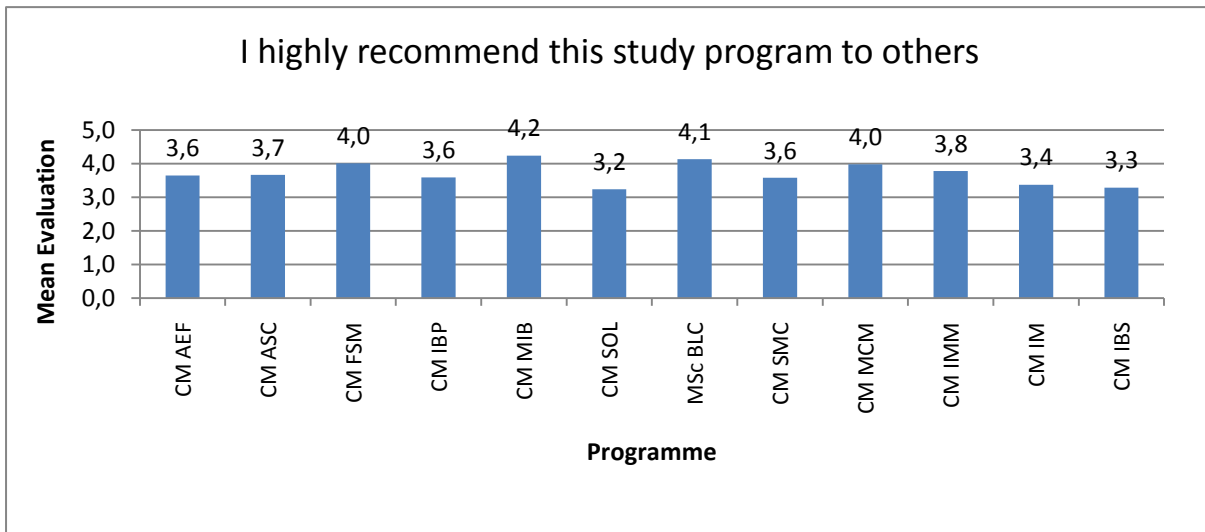
Table 5.1 Evaluation of CM concentrations in English

		CM Concentrations in English												
		CM AEF	CM ASC	CM FSM	CM IBP	CM MIB	CM SOL	MSc BLC	CM SMC	CM MCM	CM IMM	CM IM	CM IBS	Total
I highly recommend this study program to others	Mean	3,6	3,7	4,0	3,6	4,2	3,2	4,1	3,6	4,0	3,8	3,4	3,3	3,7
	No. of valid answers	74	39	85	37	46	55	29	43	64	84	8	82	646
I am satisfied with the service provided by the administration	Mean	3,3	3,1	3,7	3,4	4,1	3,9	3,5	3,7	3,4	3,4	4,1	2,9	3,5
	No. of valid answers	72	39	82	37	45	56	26	41	61	85	8	81	633
The necessary information about the program is generally easily accessible	Mean	3,7	3,3	3,7	3,4	4,2	3,9	3,7	3,5	3,5	3,7	4,1	2,9	3,6
	No. of valid answers	71	39	80	37	46	56	27	41	62	84	8	81	632
This academic year has been well planned and structured	Mean	3,4	3,3	3,6	3,0	4,0	3,8	3,7	3,2	3,4	3,5	3,5	2,9	3,4
	No. of valid answers	67	39	78	37	45	55	25	40	62	83	8	80	619
I am satisfied with the physical surroundings	Mean	4,1	4,0	4,2	4,4	4,4	4,1	4,1	4,3	3,9	4,1	4,0	4,3	4,2
	No. of valid answers	69	39	80	37	45	56	27	40	62	85	8	80	628
The program's social environment is good	Mean	3,6	3,8	3,7	4,4	3,9	3,8	4,0	4,2	3,8	4,0	3,4	4,0	3,9
	No. of valid answers	67	39	80	37	44	56	27	41	60	85	8	80	624
This academic year has been intellectually challenging	Mean	4,4	4,3	4,1	4,5	4,5	4,1	4,0	3,9	4,0	3,9	4,0	3,5	4,1
	No. of valid answers	68	39	77	36	41	55	25	39	59	82	8	77	606
All subjects have contributed to the overall study program and its context	Mean	3,6	3,7	3,4	3,7	3,9	3,6	3,9	3,6	3,9	3,5	3,0	3,1	3,6
	No. of valid answers	64	37	76	36	41	54	24	39	58	82	8	75	594
The way examinations are held allows me to demonstrate the knowledge I have acquired	Mean	3,0	3,3	3,3	3,6	3,5	3,4	3,7	3,2	3,7	3,3	3,5	2,8	3,3
	No. of valid answers	66	39	77	36	41	54	25	39	59	82	8	76	602
The academic year has given me the opportunity to immerse myself in already familiar academic problems, theories and methods	Mean	3,5	3,7	3,9	4,1	3,9	3,5	3,9	3,8	4,0	3,8	4,0	3,6	3,8
	No. of valid answers	68	39	76	36	42	55	26	39	59	81	8	75	604
The academic year has familiarized me with new academic problems, theories and methods	Mean	4,1	4,2	4,1	4,2	4,4	4,1	4,0	4,2	4,2	4,0	4,0	3,5	4,0
	No. of valid answers	68	38	78	36	42	55	26	39	59	83	8	76	608
Overall, the classes have been able to involve and motivate me whilst maintaining my interest	Mean	3,4	3,7	3,6	3,9	4,0	3,4	3,9	3,5	3,7	3,3	3,1	3,1	3,5
	No. of valid answers	66	38	76	36	41	54	24	39	59	83	8	76	600
The academic year has given me competencies that I expect to apply in my future job	Mean	3,9	4,0	4,0	3,6	4,0	3,3	3,8	3,8	3,9	3,7	3,6	3,2	3,7
	No. of valid answers	68	39	77	36	42	54	25	37	58	82	8	74	600
CBS is a highly internationally-oriented university	Mean	3,8	4,0	3,7	3,3	3,9	3,7	4,0	3,7	3,8	3,9	3,8	3,8	3,8
	No. of valid answers	68	39	77	37	45	54	28	39	60	84	8	80	619
Population		254	92	252	99	157	128	105	121	196	229	22	219	

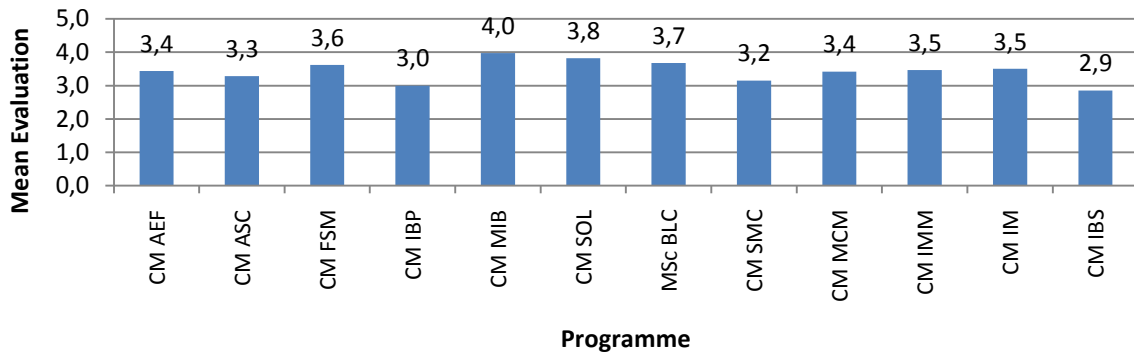
Values for calculating means:

1= "Completely disagree"; 2= "Mostly disagree"; 3= "Neither agree nor disagree"; 4= "Mostly agree"; 5= "Completely agree"

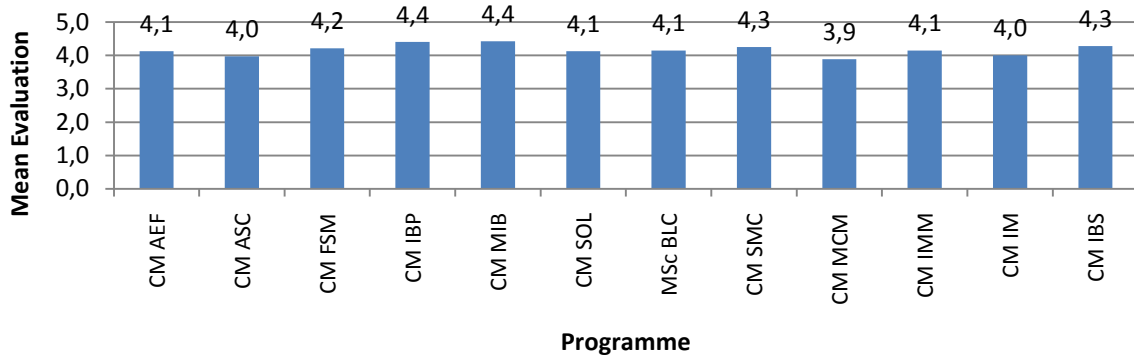
Figure 51 Evaluation Selected questions. CM concentrations in English



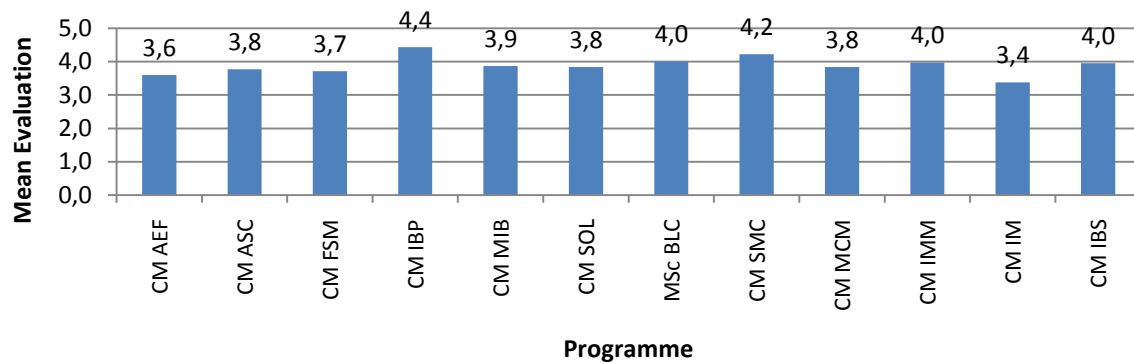
This academic year has been well planned and structured

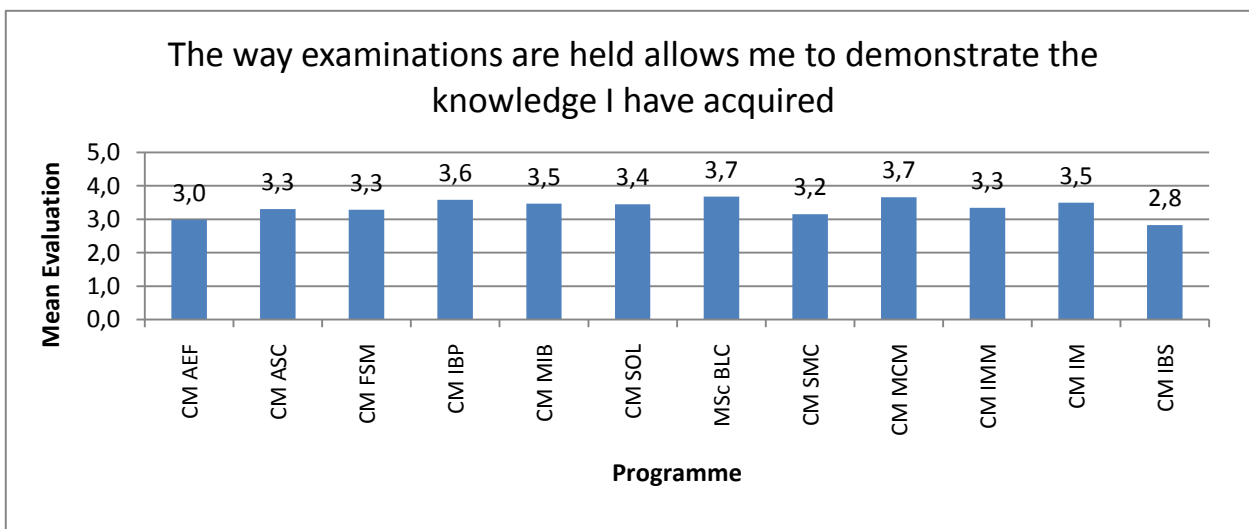
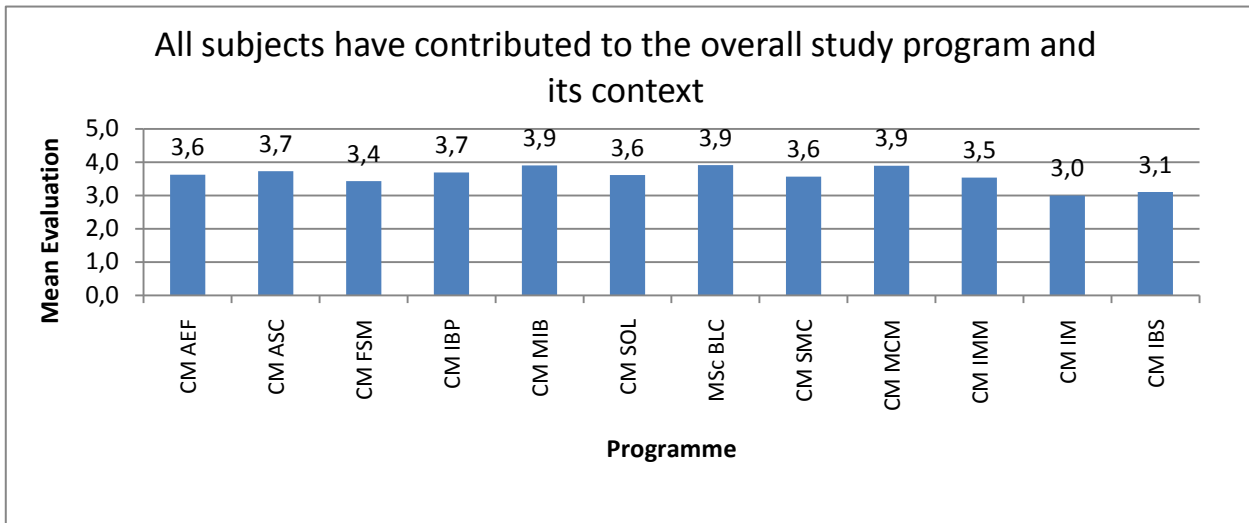
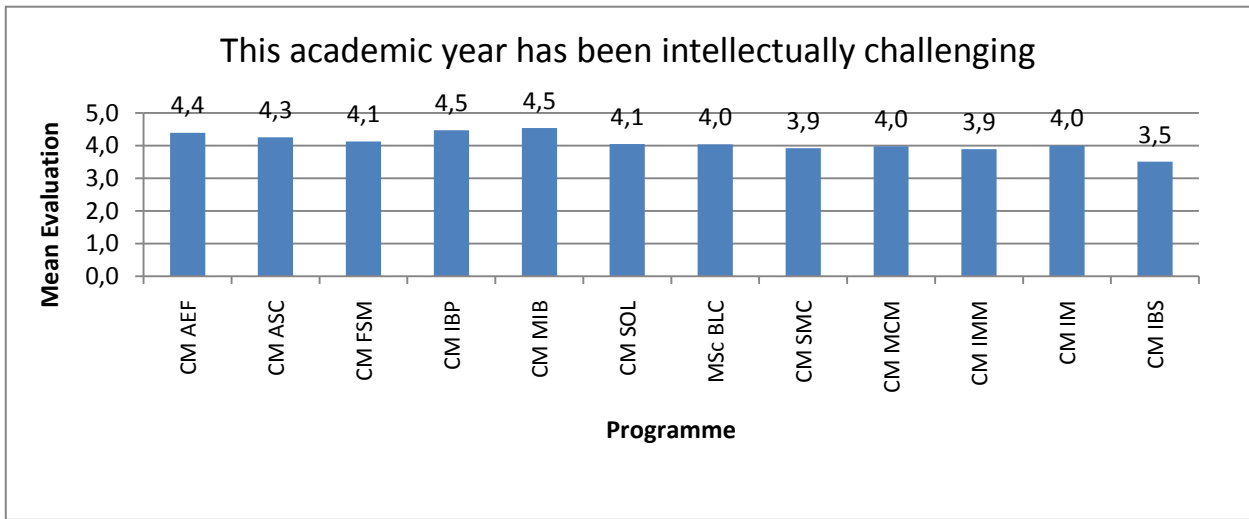


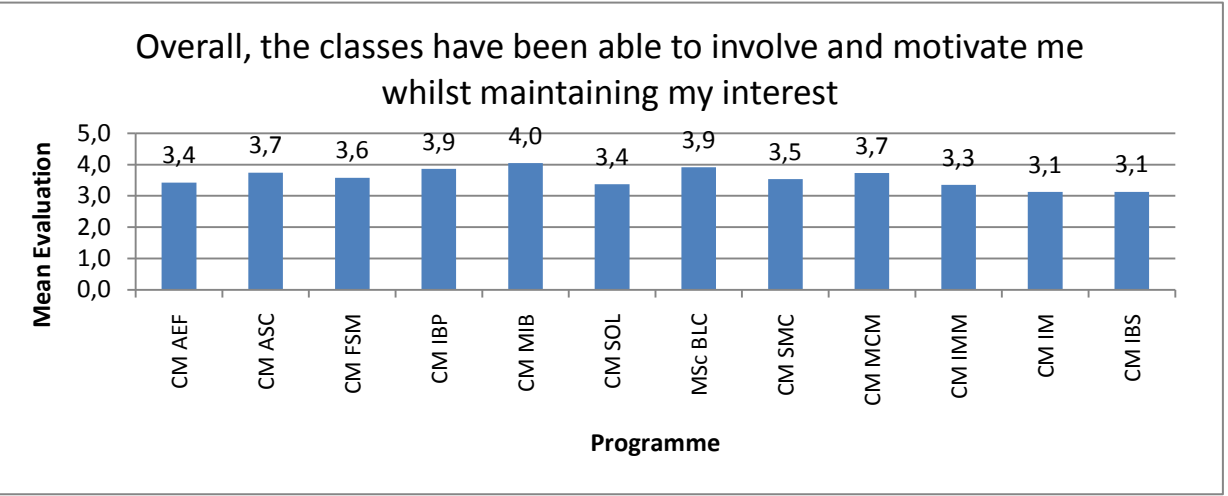
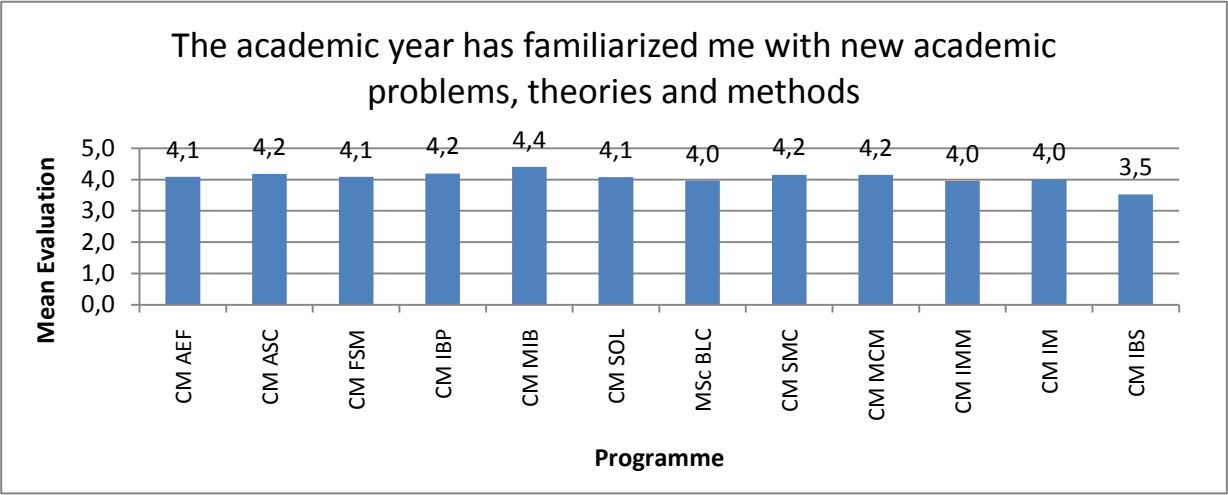
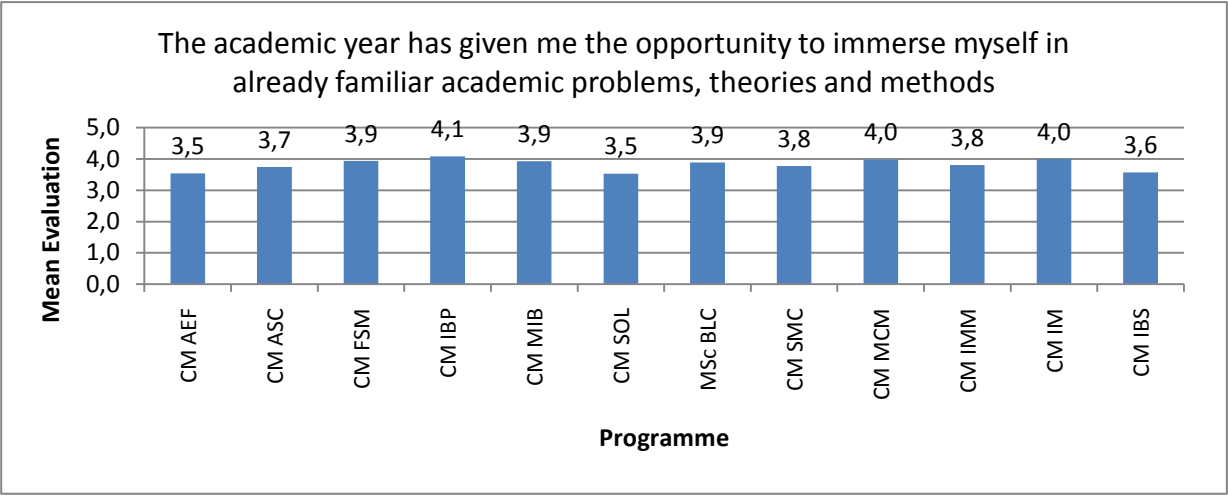
I am satisfied with the physical surroundings

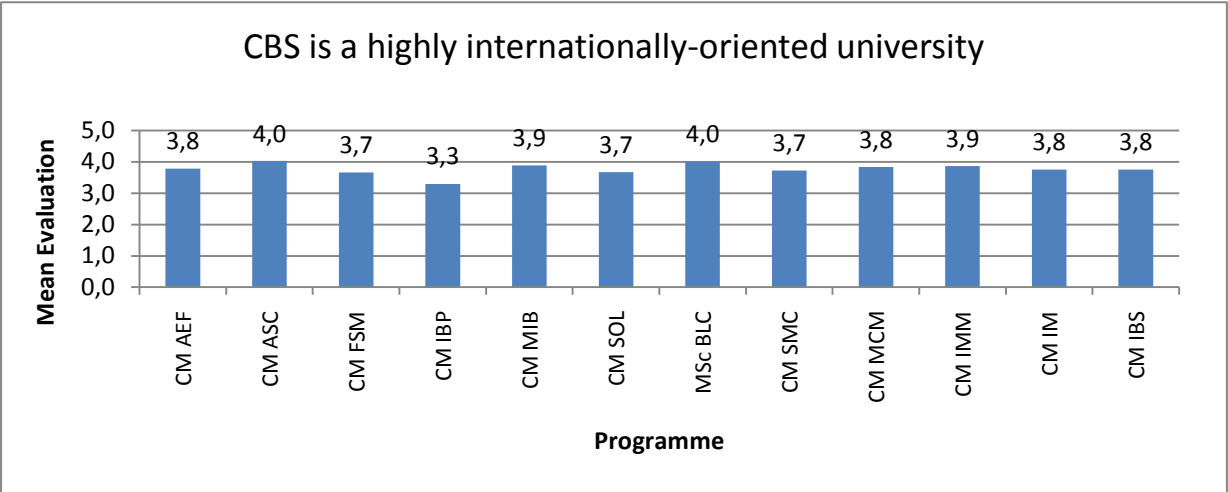
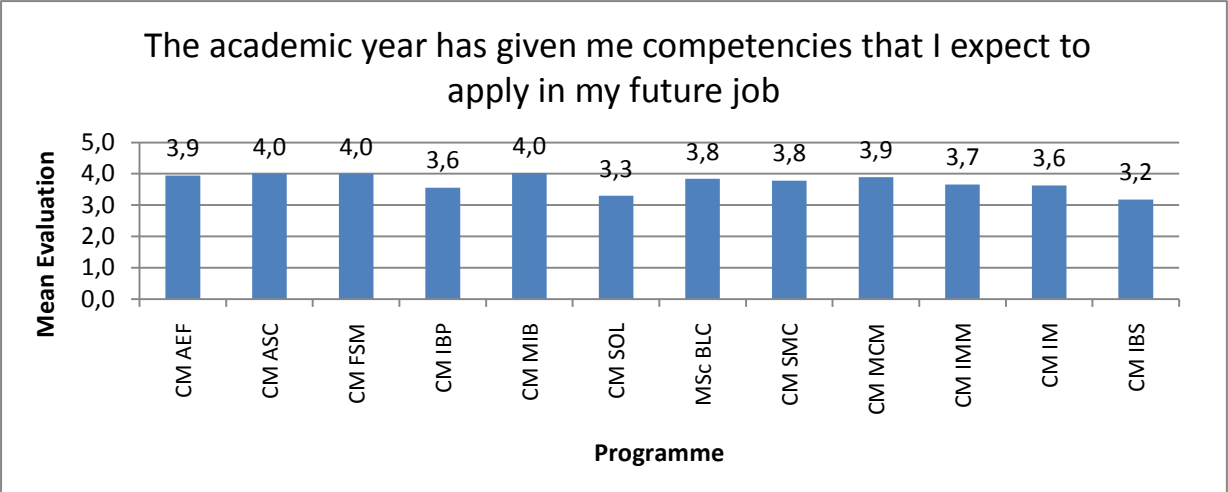


The program's social environment is good









6. Other CM programmes

6.1. Evaluation of Other CM programmes

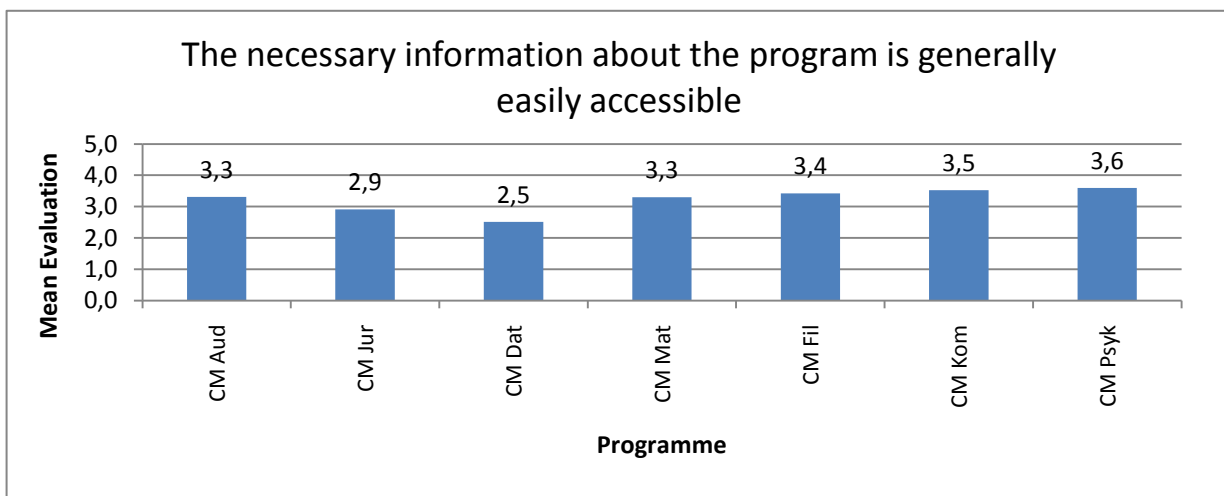
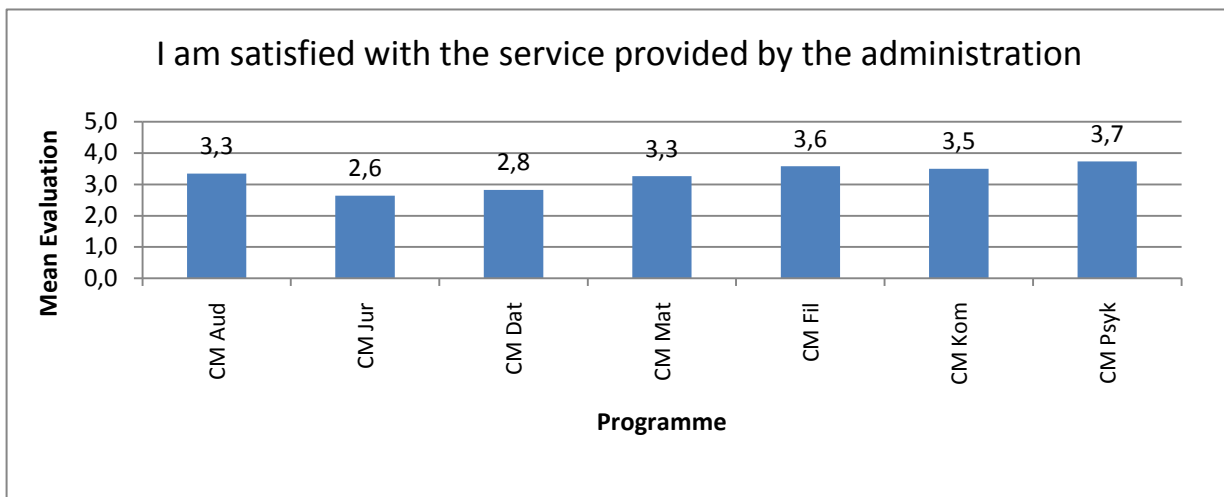
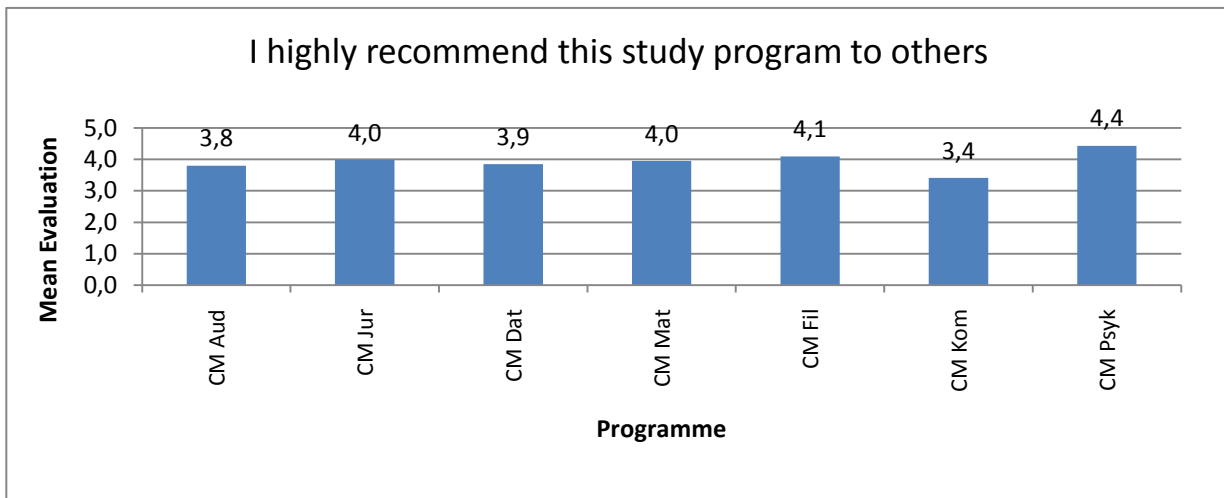
Table 6.1 Evaluation of Other CM programmes

		Other CM programmes							
		CM Aud	CM Jur	CM Dat	CM Mat	CM Fil	CM Kom	CM Psyk	Total
I highly recommend this study program to others	Mean	3,8	4,0	3,9	4,0	4,1	3,4	4,4	3,8
	No. of valid answers	101	48	27	22	20	51	16	285
I am satisfied with the service provided by the administration	Mean	3,3	2,6	2,8	3,3	3,6	3,5	3,7	3,2
	No. of valid answers	99	47	28	19	19	50	15	277
The necessary information about the program is generally easily accessible	Mean	3,3	2,9	2,5	3,3	3,4	3,5	3,6	3,2
	No. of valid answers	100	48	27	20	19	51	15	280
This academic year has been well planned and structured	Mean	3,4	2,5	2,8	3,3	2,9	2,6	3,3	3,0
	No. of valid answers	97	44	25	18	15	50	16	265
I am satisfied with the physical surroundings	Mean	3,5	3,9	4,3	3,9	3,5	4,1	4,2	3,8
	No. of valid answers	100	47	27	19	17	50	16	276
The program's social milieu is good	Mean	3,2	3,2	3,8	3,3	3,8	3,6	3,5	3,4
	No. of valid answers	84	46	26	18	16	49	15	254
This academic year has been intellectually challenging	Mean	4,0	4,3	3,6	4,5	4,1	4,0	4,3	4,1
	No. of valid answers	95	45	25	19	16	51	14	265
All subjects have contributed to the overall study program and its context	Mean	3,8	3,6	3,0	3,8	3,1	3,4	3,7	3,6
	No. of valid answers	92	40	21	18	15	50	13	249
The way examinations are held means that I am able to demonstrate my acquired knowledge	Mean	3,6	3,1	3,8	3,8	3,2	3,2	3,8	3,4
	No. of valid answers	95	41	24	18	15	50	12	255
The academic year has given me the opportunity to immerse myself in already familiar academic problems, theories and methods	Mean	3,6	3,9	3,7	3,9	3,8	3,3	4,2	3,7
	No. of valid answers	96	44	25	19	16	50	14	264
The academic year has familiarized me with new academic problems, theories and methods	Mean	4,0	3,8	3,5	4,4	4,1	4,2	4,3	4,0
	No. of valid answers	94	46	25	19	16	50	14	264
Overall, the classes have been able to involve and motivate me whilst maintaining my interest	Mean	3,6	3,6	3,3	3,4	3,4	3,1	3,8	3,5
	No. of valid answers	95	43	23	18	16	50	14	259
The academic year has given me competencies I expect being able to apply in my future job	Mean	4,0	4,0	4,0	3,8	3,5	3,6	4,4	3,9
	No. of valid answers	95	45	24	18	17	50	14	264
CBS is a highly internationally-oriented university	Mean	3,5	3,2	3,8	4,2	3,9	4,0	3,3	3,6
	No. of valid answers	91	45	25	19	15	50	13	257
Population		750	218	123	94	74	164	55	

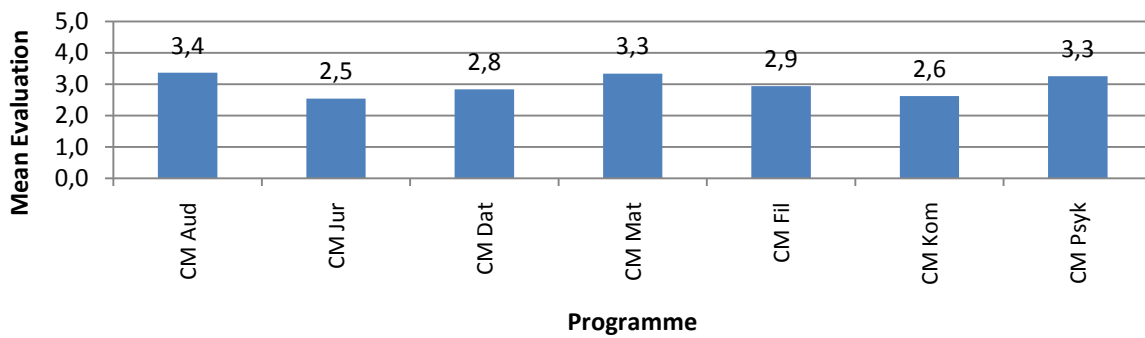
Values for calculating means:

1= "Completely disagree"; 2= "Mostly disagree"; 3= "Neither agree nor disagree"; 4= "Mostly agree"; 5= "Completely agree"

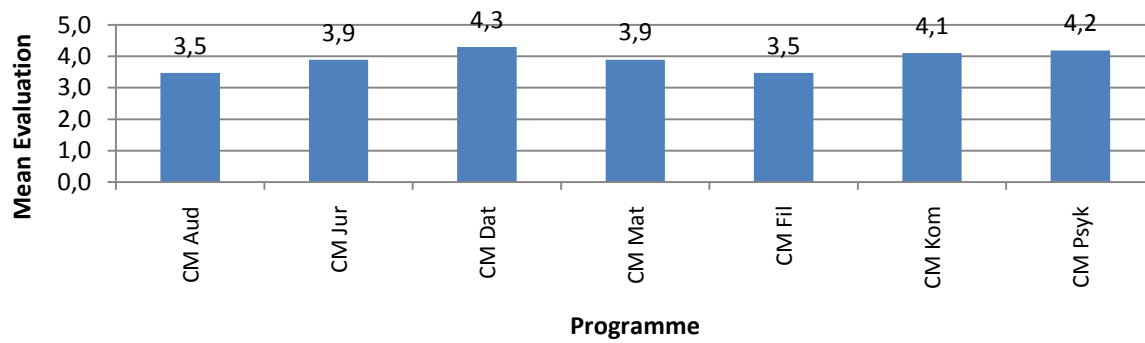
Figure 6.1. Evaluation. Selected questions. Other CM Programmes



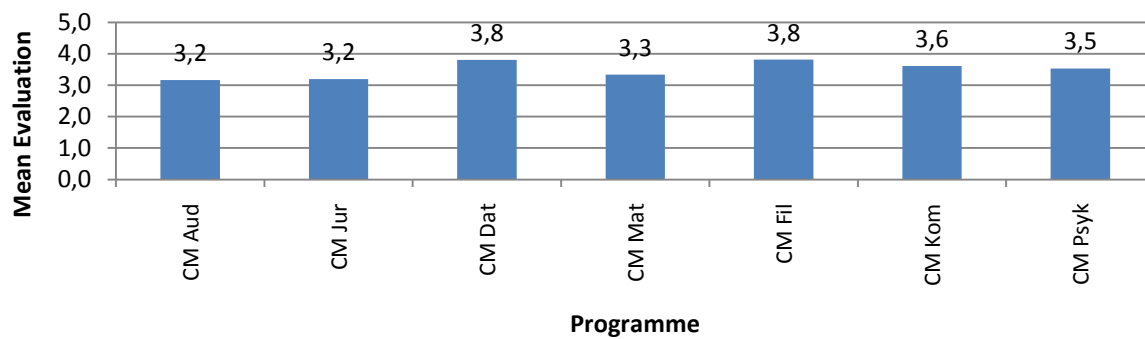
This academic year has been well planned and structured

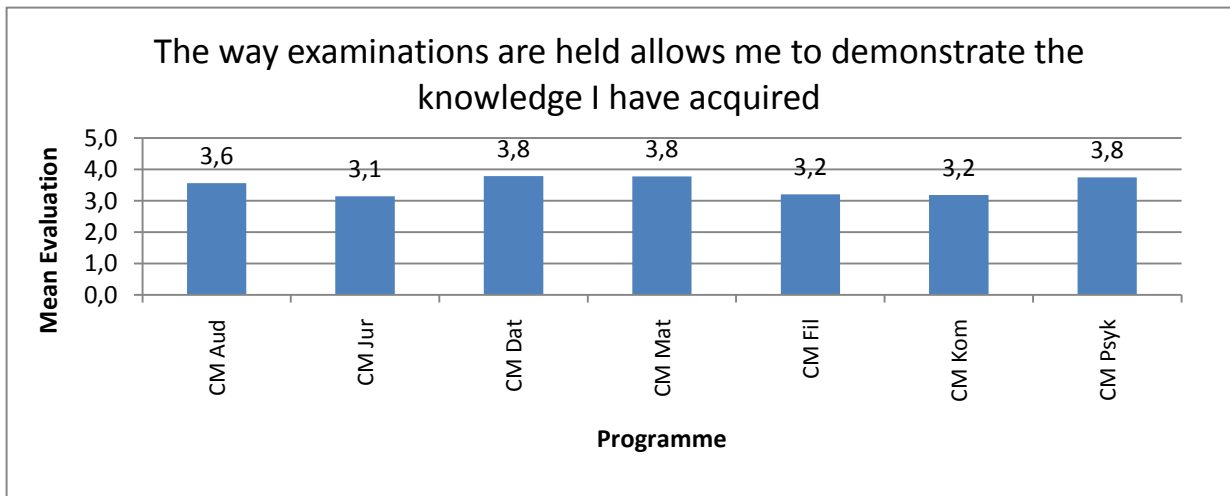
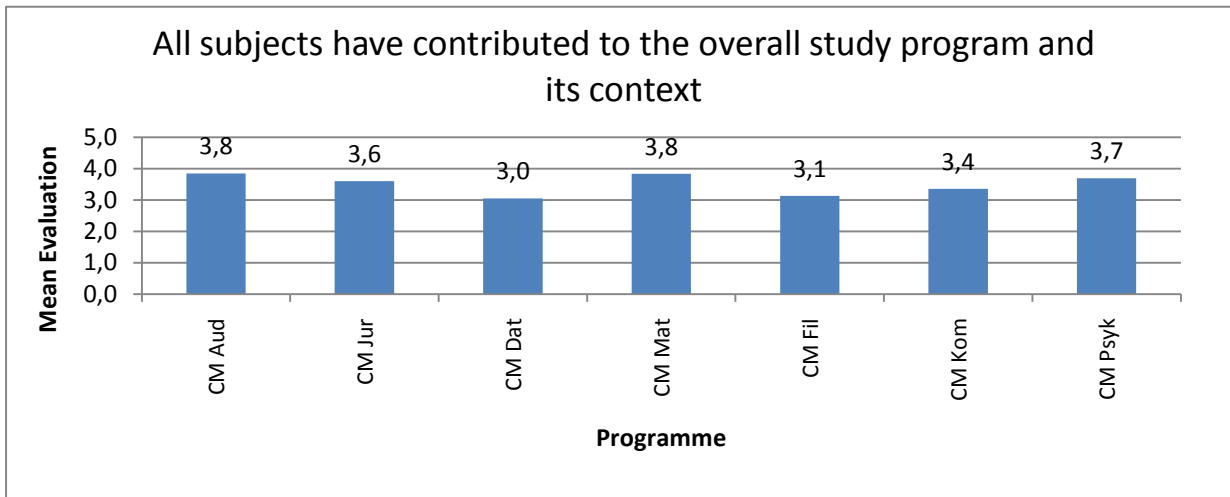
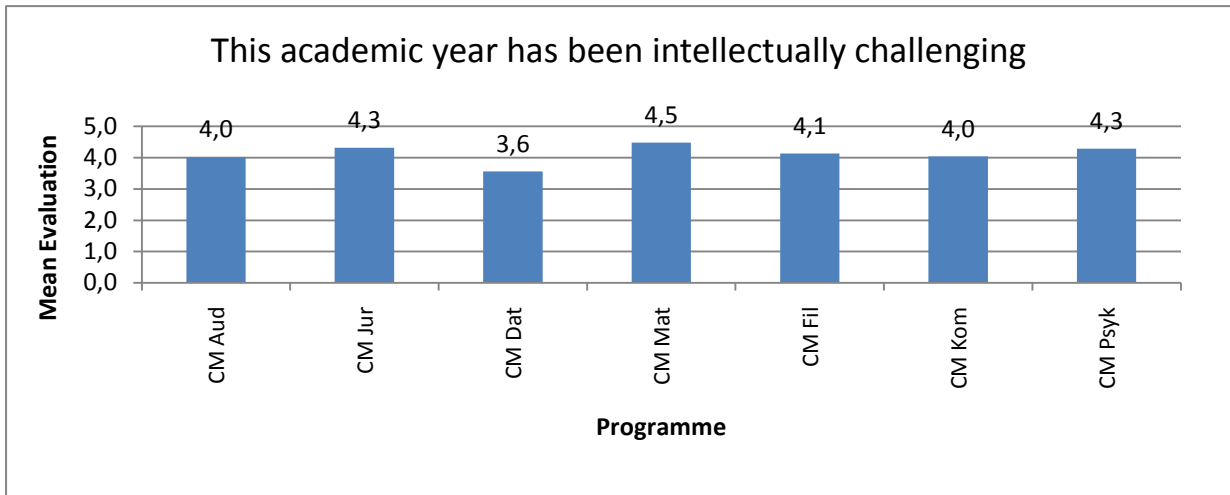


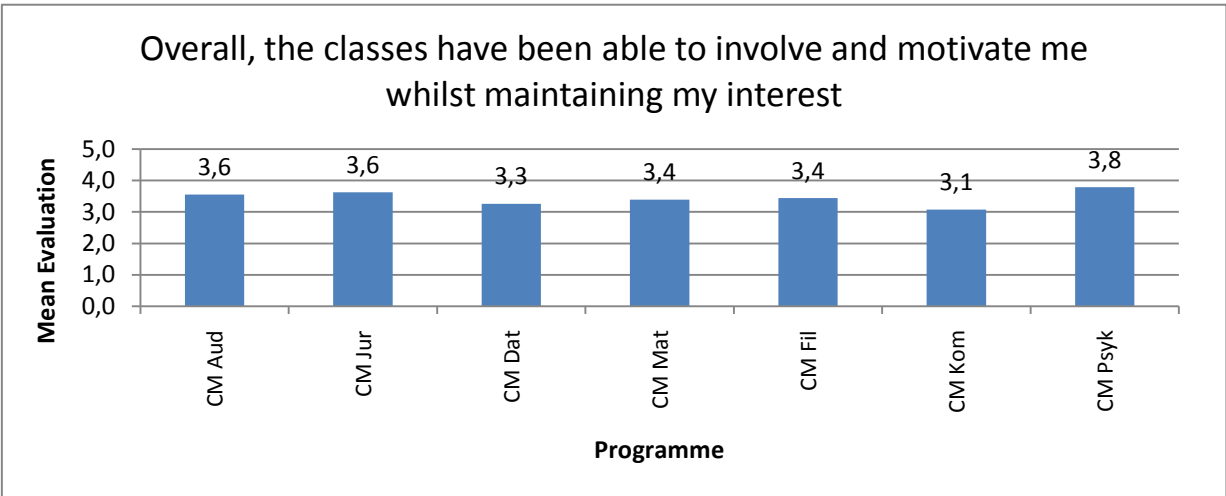
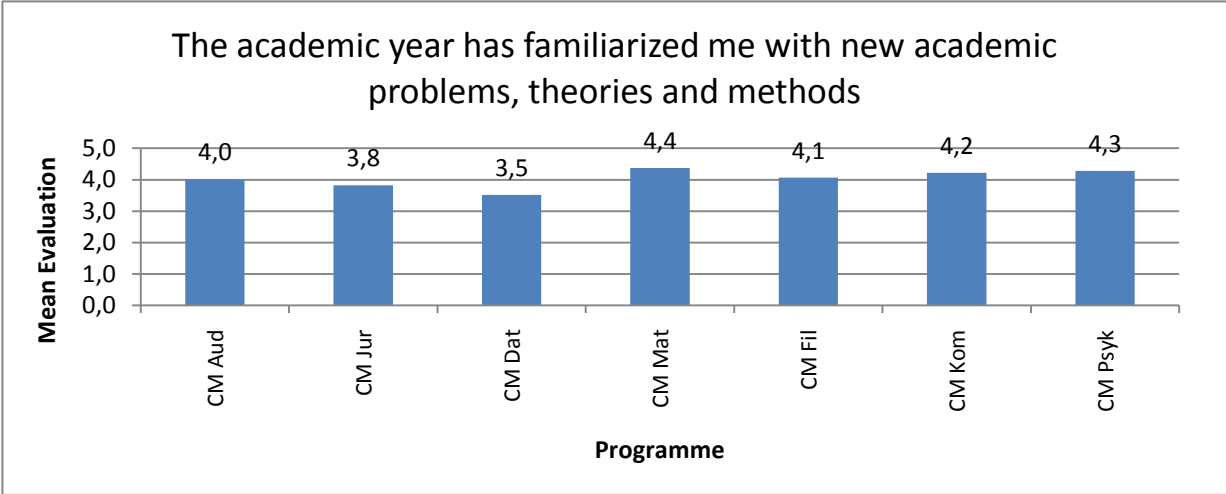
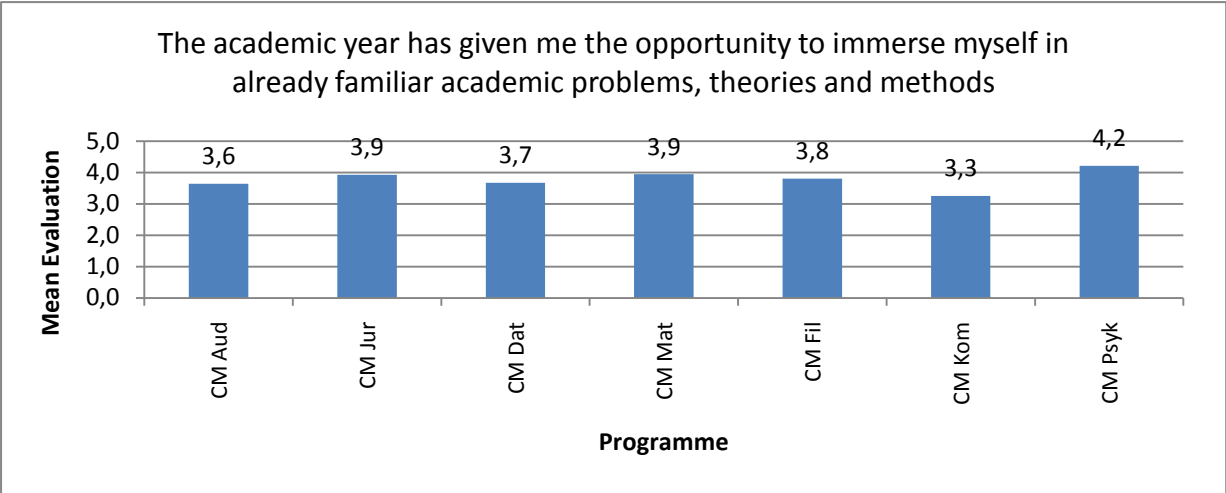
I am satisfied with the physical surroundings



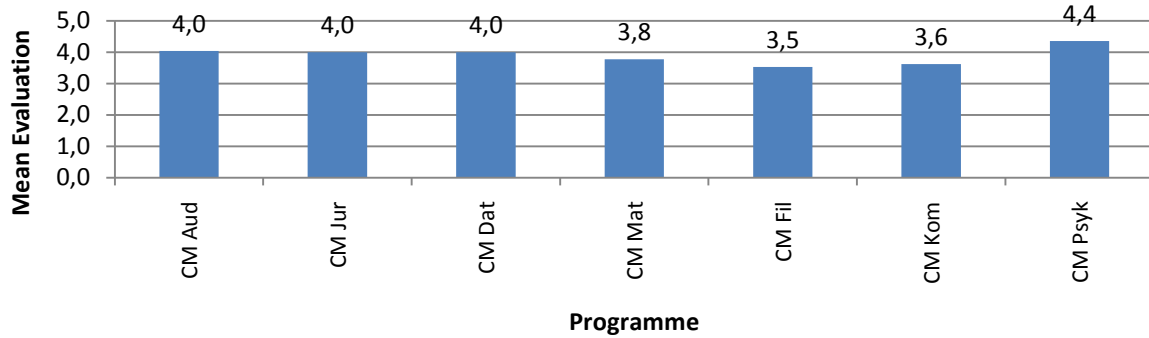
The program's social environment is good



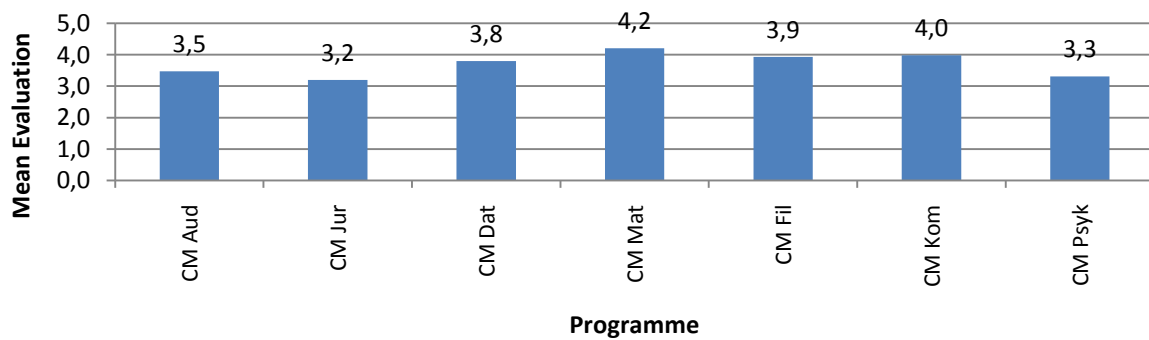




The academic year has given me competencies that I expect to apply in my future job



CBS is a highly internationally-oriented university



7.1 Cand. Soc. programmes

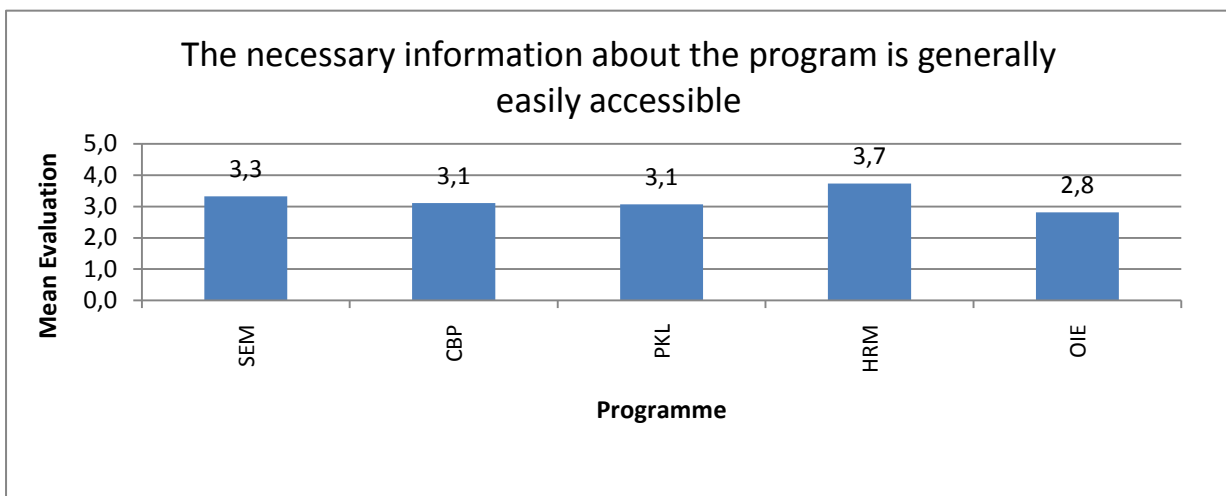
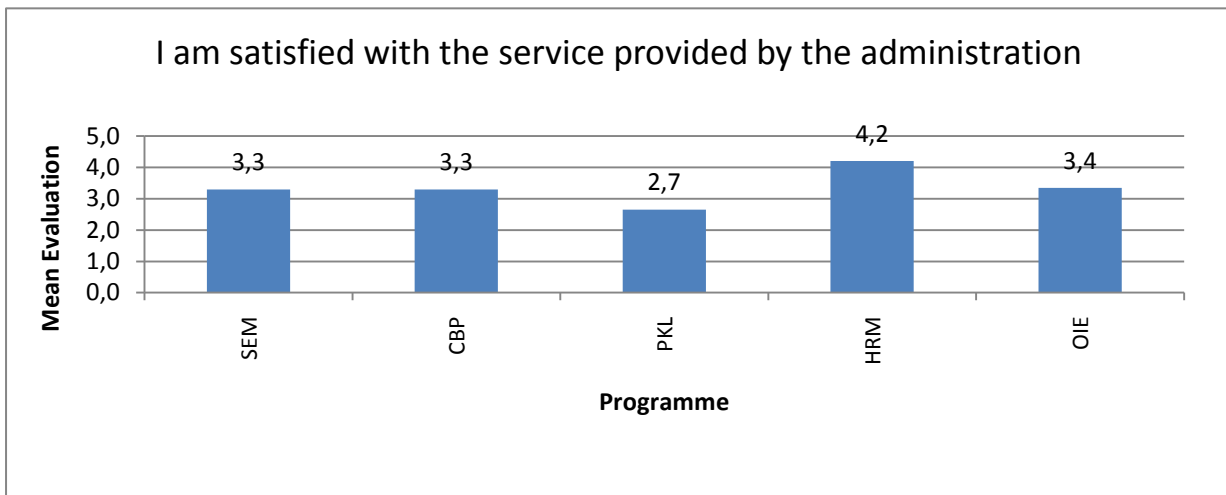
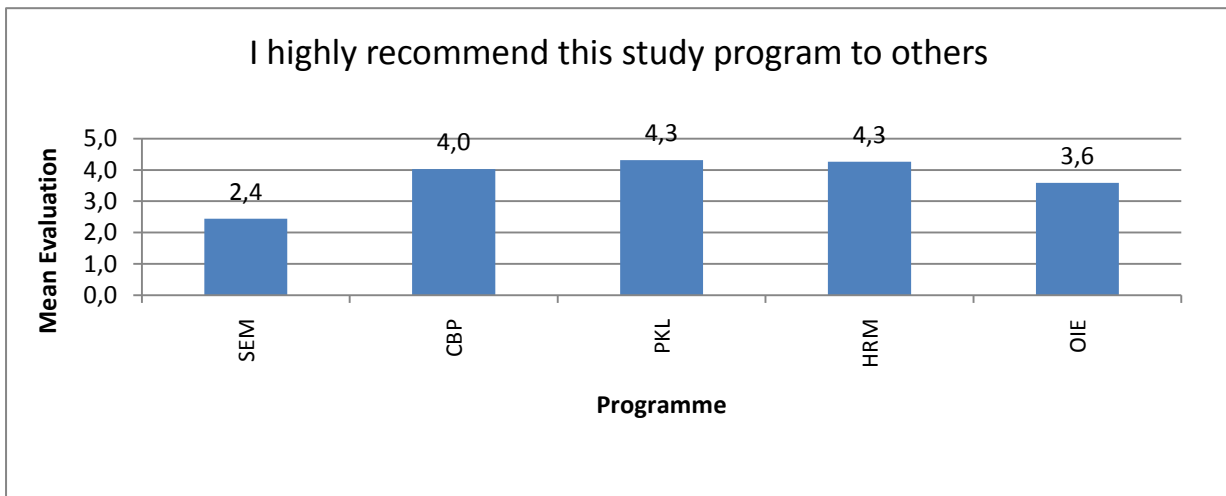
7.1. Evaluation of Cand. Soc. Programmes

Table 7.1 Evaluation of Cand. Soc. Programmes

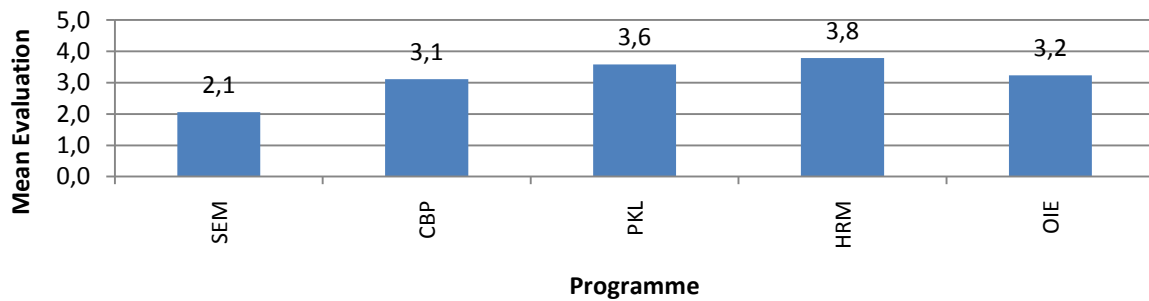
		Cand.Soc programs					Total
		SEM	CBP	PKL	HRM	OIE	
I highly recommend this study program to others	Mean	2,4	4,0	4,3	4,3	3,6	3,7
	No. of valid answers	34	36	29	19	17	135
I am satisfied with the service provided by the administration	Mean	3,3	3,3	2,7	4,2	3,4	3,3
	No. of valid answers	34	34	29	19	17	133
The necessary information about the program is generally easily accessible	Mean	3,3	3,1	3,1	3,7	2,8	3,2
	No. of valid answers	34	35	29	19	16	133
This academic year has been well planned and structured	Mean	2,1	3,1	3,6	3,8	3,2	3,1
	No. of valid answers	34	34	29	19	17	133
I am satisfied with the physical surroundings	Mean	4,1	4,4	3,9	3,9	3,4	4,0
	No. of valid answers	34	35	29	19	17	134
The program's social milieu is good	Mean	3,9	4,5	4,4	3,7	3,2	4,0
	No. of valid answers	34	35	29	18	16	132
This academic year has been intellectually challenging	Mean	2,9	4,2	4,7	4,4	3,6	3,9
	No. of valid answers	34	35	29	18	17	133
All subjects have contributed to the overall study program and its context	Mean	2,5	3,7	3,5	3,9	3,3	3,3
	No. of valid answers	34	35	29	18	17	133
The way examinations are held means that I am able to demonstrate my acquired knowledge	Mean	2,3	3,5	3,4	3,7	3,3	3,2
	No. of valid answers	34	35	29	17	17	132
The academic year has given me the opportunity to immerse myself in already familiar academic problems, theories and methods	Mean	2,9	3,9	4,0	3,7	3,4	3,6
	No. of valid answers	34	35	29	18	16	132
The academic year has familiarized me with new academic problems, theories and methods	Mean	3,2	4,3	4,7	4,4	3,9	4,1
	No. of valid answers	34	35	29	18	17	133
Overall, the classes have been able to involve and motivate me whilst maintaining my interest	Mean	2,5	3,7	4,4	4,3	3,7	3,6
	No. of valid answers	34	35	29	18	17	133
The academic year has given me competencies I expect being able to apply in my future job	Mean	2,9	3,7	4,5	4,3	3,9	3,8
	No. of valid answers	34	34	29	18	17	132
CBS is a highly internationally-oriented university	Mean	3,3	3,7	3,7	3,5	3,5	3,5
	No. of valid answers	34	36	28	17	15	130
Population		62	97	88	81	50	

Values for calculating means:
 1= "Completely disagree"; 2= "Mostly disagree"; 3= "Neither agree nor disagree"; 4= "Mostly agree"; 5= "Completely agree"

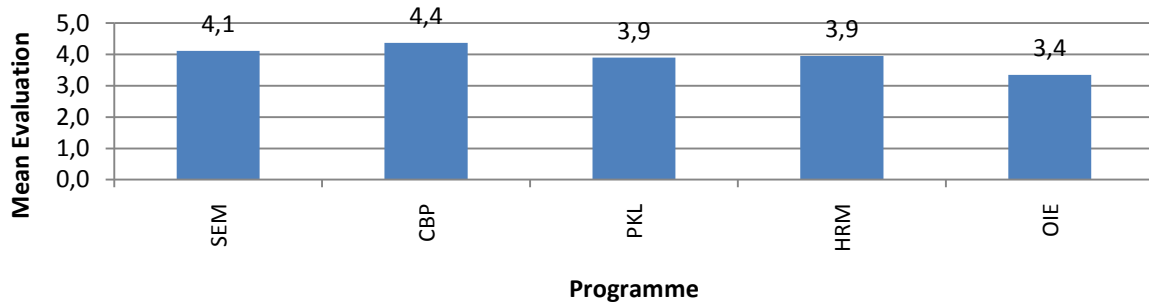
Figure 7.1 Evaluation Selected questions. Cand. Soc. Programmes



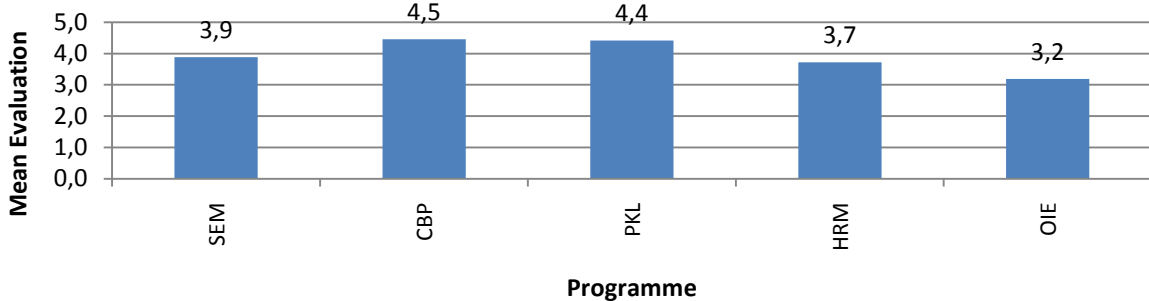
This academic year has been well planned and structured

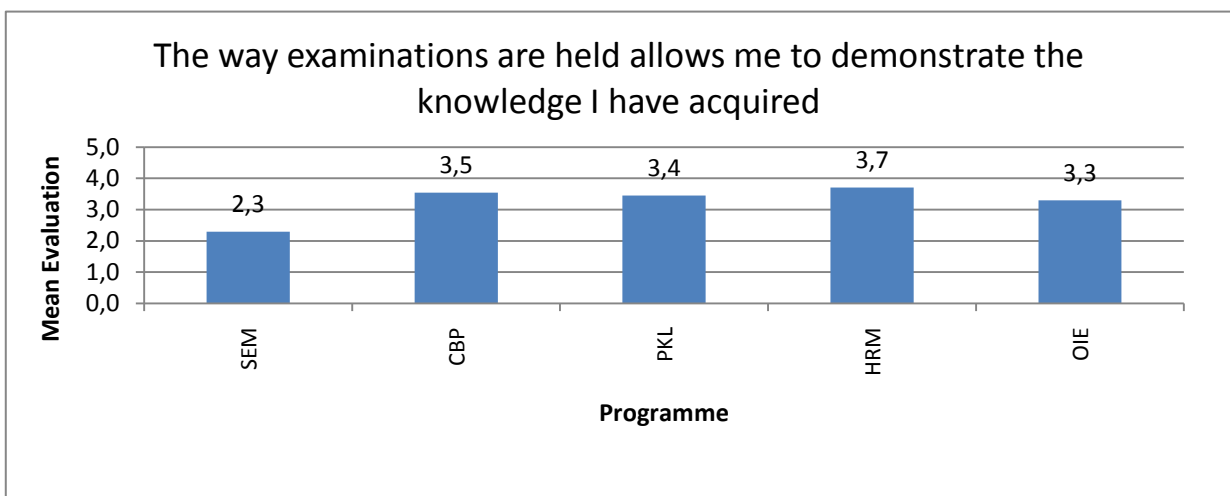
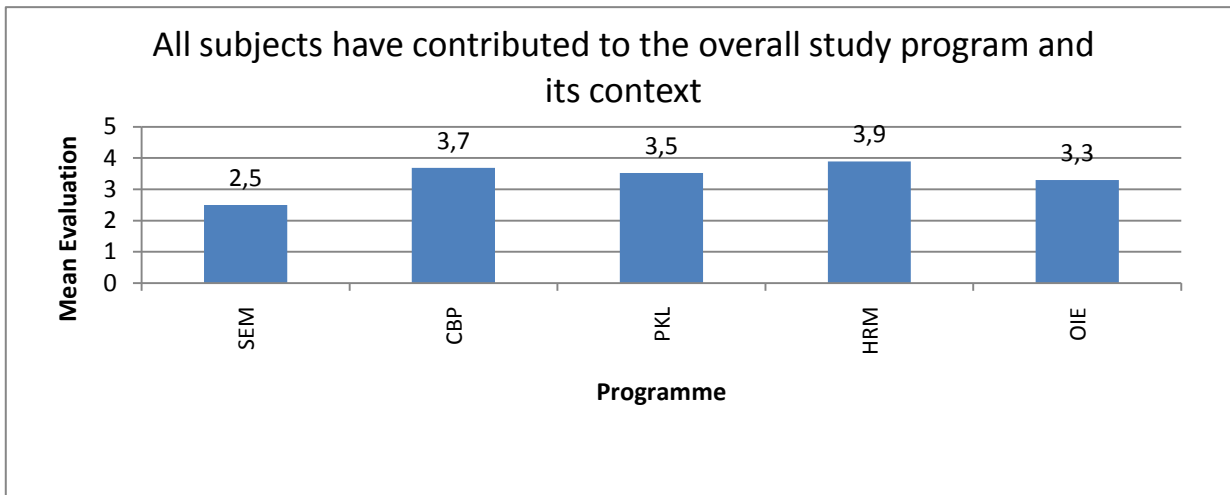
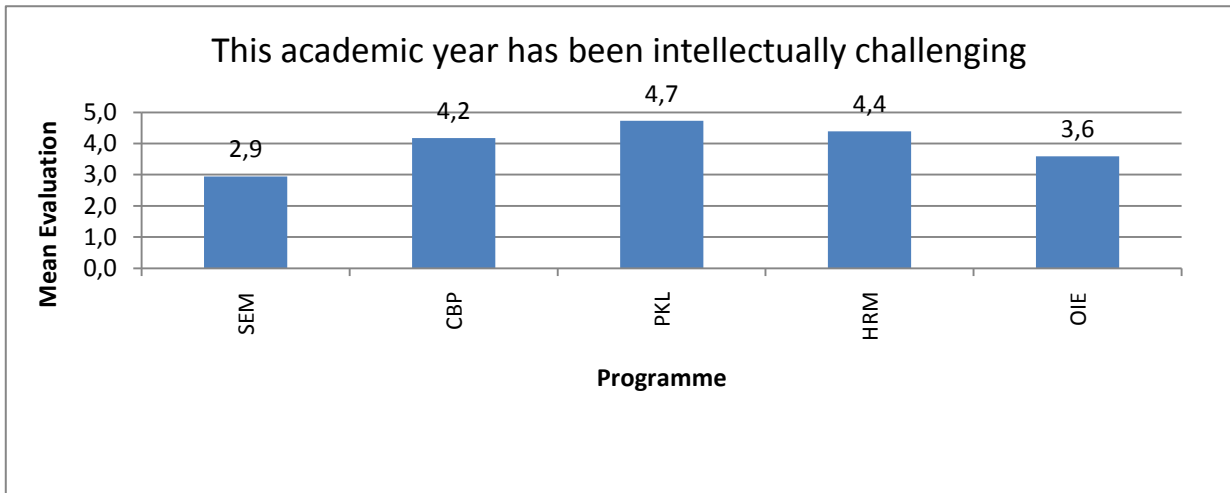


I am satisfied with the physical surroundings

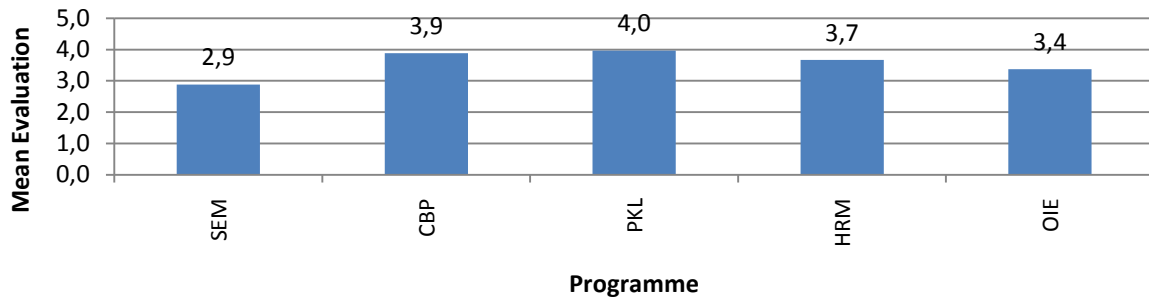


The program's social environment is good

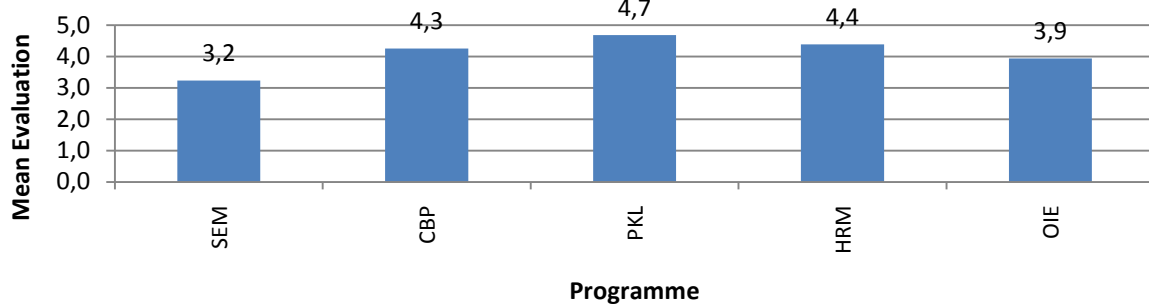




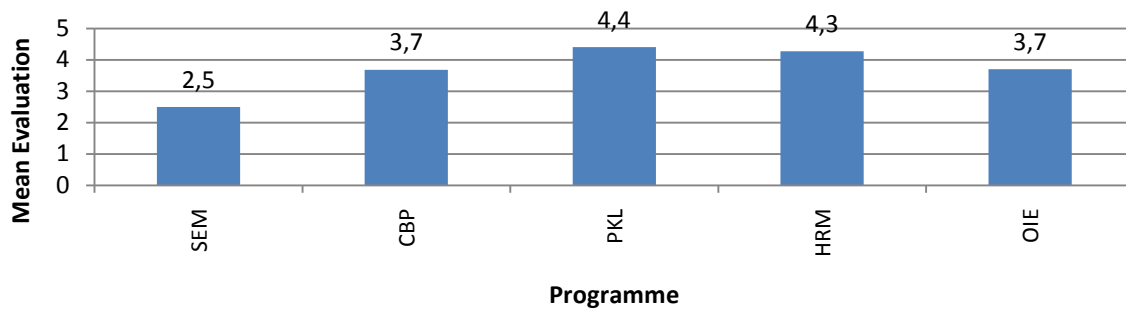
The academic year has given me the opportunity to immerse myself in already familiar academic problems, theories and methods



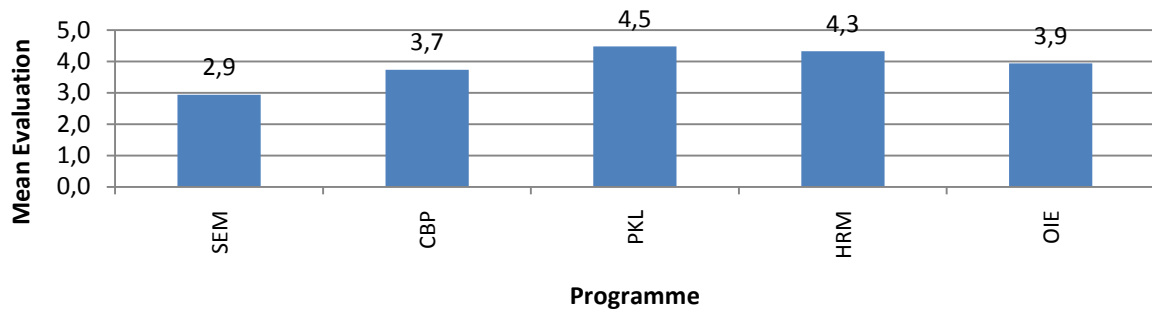
The academic year has familiarized me with new academic problems, theories and methods



Overall, the classes have been able to involve and motivate me whilst maintaining my interest



The academic year has given me competencies that I expect to apply in my future job



CBS is a highly internationally-oriented university

