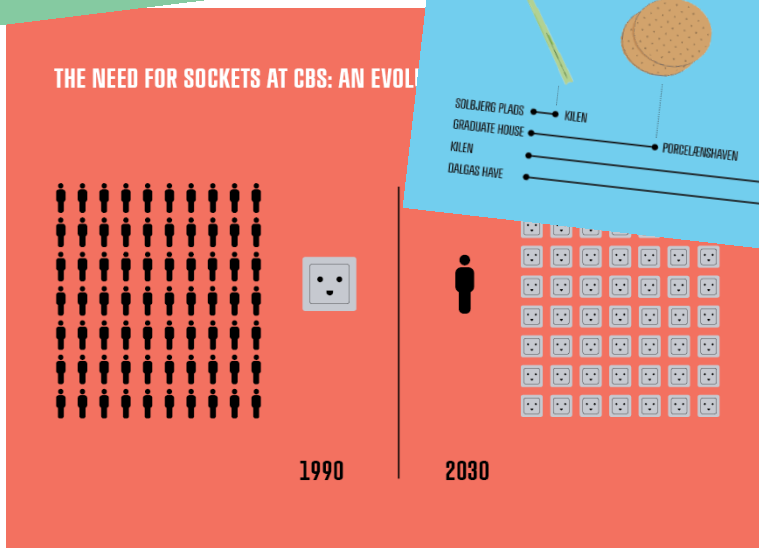
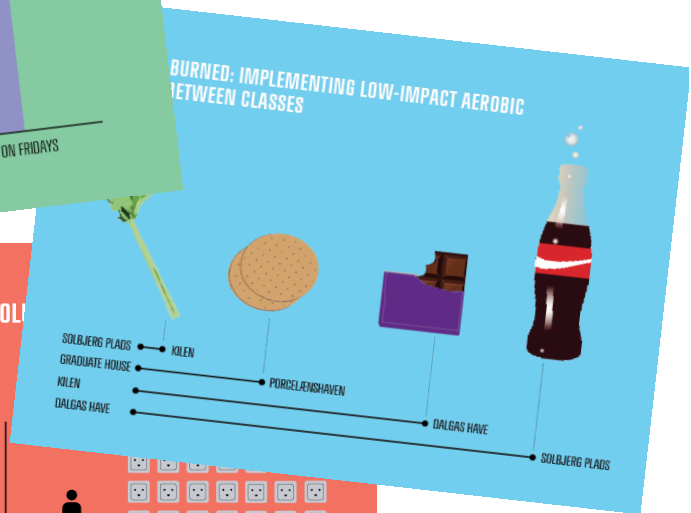
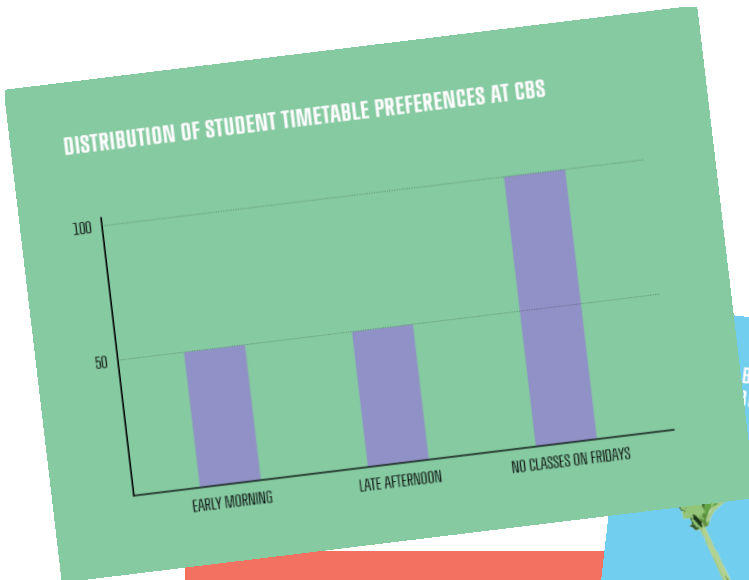


ACADEMIC YEAR EVALUATION

Copenhagen Business School



Academic Year Evaluation

Since June 2009 CBS has evaluated the academic year of each study programme. In the beginning of May, students receive a questionnaire regarding the past academic year. The questionnaire looks at the overall satisfaction with CBS, satisfaction with the administrative support, the study environment, and the academic output. Additionally this year the students was asked to evaluate the new platform my.cbs.dk the results for your study programme are shown in this report.

These evaluations serve three main purposes:

1. To collect information about the student experience as regards the continuity and progression of a programme, covering, in particular, areas that are not evaluated in the regular course evaluations.
2. To collect information to serve as documentation in the national and international accreditation process.
3. To ensure that evaluation results are systematically published on CBS' homepage without risking identification of individual teachers (under the heading 'Academic year evaluations' at <https://www.cbs.dk/en/about-cbs/profile/quality/teaching-evaluations/analyses-and-reports>).

This report shows the result for your study programme, if you wish to compare the study programme with others or look at the CBS total please find the information at CBSShare.

We hope you will find the report useful in its present form and welcome any feedback regarding structure etc. Please email eva@cbs.dk with your queries.

Business Intelligence and Development | CBS Evaluation

Content

Introduction

1 Response rates

1.1 Overall CBS - Table

1.2 Study programme – Bar chart

2 Evaluation average within study programme

2.1 CBS and Study Programme comparison - Table

3 Response distribution - study programme

3.1 Distribution of answers to each question - Bar charts

4 Comments

4.1 Regarding the Administration

4.2 Regarding the study environment

4.3 Regarding the Academic format

4.4 Regarding my.cbs.dk

4.5 Additional comments