



**Copenhagen
Business School**
HANDELSHØJSKOLEN

FACTS & FIGURES 2011



Where university means business



CBS is a unique, and we believe very special, university. We are a university in our own right – one might say a ‘business university’ – rather than simply a faculty or department

within a larger institution. As the following pages confirm, we are big by international standards and cover a much broader range of subjects than is conventionally found in a business school. We constantly strive to take full advantage of this scale and diversity by combining academic excellence with cross-disciplinarity (both in terms of our teaching and research).

Founded in 1917 by the Copenhagen business community, our Danish heritage has shaped our culture and identity. But we operate very much as an open institution with an international mindset. This means that when it comes to education, research, stakeholder collaboration and dissemination we aim to contribute locally but also globally.

We hope that this short overview will get you acquainted with – or perhaps update you on – our unique university. Do not hesitate to contact us if we can provide further information about our activities.

Alan Irwin,
Acting President.

Business in Society

What does it take to tackle large-scale societal and business challenges – whether sustainability or international debt, technological innovation or cross-cultural communication? At CBS we certainly believe that excellent teaching and research are needed to provide the sharpest analysis and insights.

Since the challenges often cross intellectual boundaries, we believe too that cross-disciplinary perspectives are important: our scale often allows us to tackle problems from a diversity of angles. And we believe that open and collaborative partnerships are essential, both with researchers and other universities but also between students, businesses, public institutions, NGOs and policy makers.

For CBS, ‘business in society’ is about taking our societal responsibilities seriously. But it is also about being open to new ways of thinking and working – including new teaching programmes and new ways of delivering education. ‘Business in society’ is more than just a slogan. We see it as a provocation, a stimulus, a challenge to current ways of working and a hope for the future.



CBS Overview



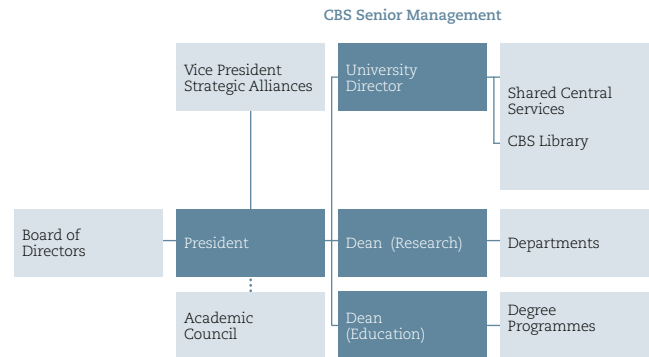
The President answers to a Board of Directors with a majority of external representatives from the business community. An elected Academic Council acts as academic advisory board.

The responsibility for research and teaching is divided between the heads of departments and the academic directors of the degree programmes respectively, and both refer directly to the deans.

CBS IN TOTALS

Student population:	18,038
Foreign students:	2,415
Full-time academic staff:	594
Visiting professors:	85
PhD students:	202
Part-time academic staff:	797
Administrative staff:	628
Funding (million Euro):	151.7
Exchange and cooperation agreements worldwide:	329

ORGANISATION



Research

CBS conducts research activities in:

- The internal relations of enterprises (organisation, management and production)
- The relations between enterprises and their surroundings (consumers, enterprises and investors)
- The social context of enterprises (politics and culture, law and economics)
- Linguistics and modern languages with a specific focus on business communication and LSP, i.e. translation/ interpreting, terminology, lexicography
- Computational linguistics
- Communication
- Cultural and area studies with a specific focus on European Studies, Asian Studies and the Study of the Americas.

Research excellence

World-Class Research Environments:

- Financial Risk Management
- Center for Strategic Management and Globalization
- Open Innovation
- Sources of National Institutional Competitiveness
- Design and Governance of Economic Institutions
- Translation Processes and Translation Systems.

Experts@CBS

The CBS expert database contains a vast number of CBS researchers who are willing to share their knowledge and experience and comment on an extensive range of issues. Visit the experts at the CBS website www.cbs.dk

Departments

Department of Accounting and Auditing

Department of Business and Politics

Department of Economics

Department of Finance

Department of Informatics

Department of Innovation and Organizational Economics

Department of Intercultural Communication and Management

Department of International Culture and Communication Studies

Department of International Economics and Management

Department of International Language Studies and Computational Linguistics

Department of Management, Politics and Philosophy

Department of Marketing

Department of Operations Management

Department of Organization

Department of Strategic Management and Globalization

Law Department

TOTALS 01.10.2010

Full-time academic staff:	594
PhD students:	202
PhD degrees conferred:	36
Research publications:	982
Articles in peer-reviewed journals:	410
Memberships of international editorial boards:	279

Research Centres

Asia Research Centre
CAMS Copenhagen
CBS Center for Corporate Social Responsibility
Center for Applied Information and Communication
Technology
Center for Applied Market Science
Centre for Art and Leadership
Centre for Business and Development Studies
Centre for Business Development and Management
Center for Business History
Center for Corporate Governance
Centre for Economic and Business Research
Centre for Financial Law
Center for Health Management
Center for Innovation and Entrepreneurship
Centre for Language, Cognition and Mentality
Center for Law, Economics & Financial Institutions
Center for Management Studies of the Building Process
CBS Centre for Negotiation
Center for Research and Innovation in Translation and
Translation Technology
Centre for School Leadership
Center for Statistics

Center for the Study of the Americas
Centre for the Study of Europe
Center for Tourism and Culture Management
Copenhagen Business Confucius Institute
Copenhagen Consensus Center
Danish Research Unit for Industrial Dynamics
DANTERMcentret
imagine.. Creative Industries Research
The Language Center
Research Centre on Biotech Business
Research Center, Management, Organization and Competence
Centre for Shipping Economics and Innovation

The challenges posed by the knowledge society, globalisation and the technological development require rapid transformation of research knowledge into a form that is practicable in the society. On this basis the centres are created to give special focus on specific research areas.

Degree Programmes

CBS offers a comprehensive range of university degrees in economics and business administration as well as within the fields of IT, philosophy, politics and other fields within the humanities. Our broad selection of full-time programmes complies with the three levels:

- 3-year Undergraduate
- 2-year Graduate
- 3-year PhD

Two of Denmark's newest Elite Master Programmes for top qualified foreign and Danish students are also offered at CBS.

Furthermore, we offer part-time programmes:

- Executive Master Programmes
- Graduate Diploma Programmes and short courses

For more information on our wide range of part-time programmes, please see page 14.



CBS Students (overall) 01.10.2010

TOTAL ENROLMENT: 7,517



TOTAL NUMBER OF STUDENTS: 18,038



TOTAL NUMBER OF GRADUATES: 4,779



Degree Programmes – Full-time Degree Programmes

	Undergraduate		Graduate		Enrolled		Students		Graduates	
BSc and MSc in Economics and Business Adm. * (13 concentrations)	635		1,304		1,598		3,723		440	828
BSc in International Business *	123				322				87	
BSc in Business Adm. and Service Management *	119				269				76	
MSc in Business Economics and Auditing			272				820			174
BSc and MSc in Business Adm. and Information Systems * (2 concentrations)	103		83		232		205		71	41
BSc and MSc in Business Adm. and Commercial Law	194		105		469		303		121	73
BSc and MSc in Business Adm. and Management Science	80		28		243		111		56	20
BSc and MSc in Business Adm. and Philosophy	104		27		253		86		79	21
BSc and MSc in Business Adm. and Organisational Communication	157		83		411		229		98	52
BSc and MSc in Business Adm. and Psychology	135		35		364		85		90	11
BSc in Business Adm. and Sociology *	71				119				*	
BSc and MSc International Business and Politics *	117		68		315		161		73	
BSc and MSc in Business, Languages and Culture * (2 concentrations)	128		113		347		314		139	60
BSc in Business, Asian Language and Culture *	44				131				33	
MSc in E-business			***				***			***
Elite MSc in Advanced Economics and Finance *			21				39			*
Elite MSocSc in International Law, Economics and Management *			**				**			**
MSocSc (5 programmes) *			315				756			133
BA in Information Management	65				180				50	
BA and MA in International Business Communication (3 concentrations)	203		311		797		801		387	147
BA in Intercultural Market Communication	224				374					
BA in English and Organisational Communication	84				135					

* Taught in English

* First graduates in 2011

** Managed at the University of Copenhagen

*** Managed at the IT University of Copenhagen

Degree Programmes

Post Experience Education

An important aspect of the university's profile is the wide range of part-time programmes and courses targeted at the business sector. They range from 2-year executive master programmes to 4-year Graduate Diplomas, Summer University and short courses.

All our programmes are research-based and are designed to meet the lifelong learning and leadership development needs for executives and professionals as well as their organisations (both private and public).

As a part of Post Experience Education, a commercial foundation, CBS-SIMI Executive, has been established to accommodate the growing need for customised executive development programmes.



Executive Programmes

GENERAL MASTER PROGRAMMES

- Full-time Master of Business Administration*
- Executive Master of Business Administration*
- Flexible Executive Master of Business Administration*
- Master of Public Administration
- Master of Public Governance
- Executive MBA in Shipping and Logistics*

SPECIALISED MASTER PROGRAMMES

- Master of Corporate Communication*
- Master of Corporate Performance*
- Master of Health Management
- Master of Management Development
- Master in Tax
- Master in Leadership and Innovation in Complex Systems*

DIPLOMA PROGRAMMES

- Graduate Certificate in Business Administration
- Graduate Diploma in Business Administration
 - Finance
 - Financial and Management Accounting
 - Financial Planning
 - International Business
 - Management Accounting and Process Management
 - Marketing Management
 - Organisation and Management
 - Retail and Key Account Management
 - Supply Chain Management

CBS-SIMI EXECUTIVE

High-level, targeted supplementary training and management development programmes by CBS-SIMI Executive

* Taught in English

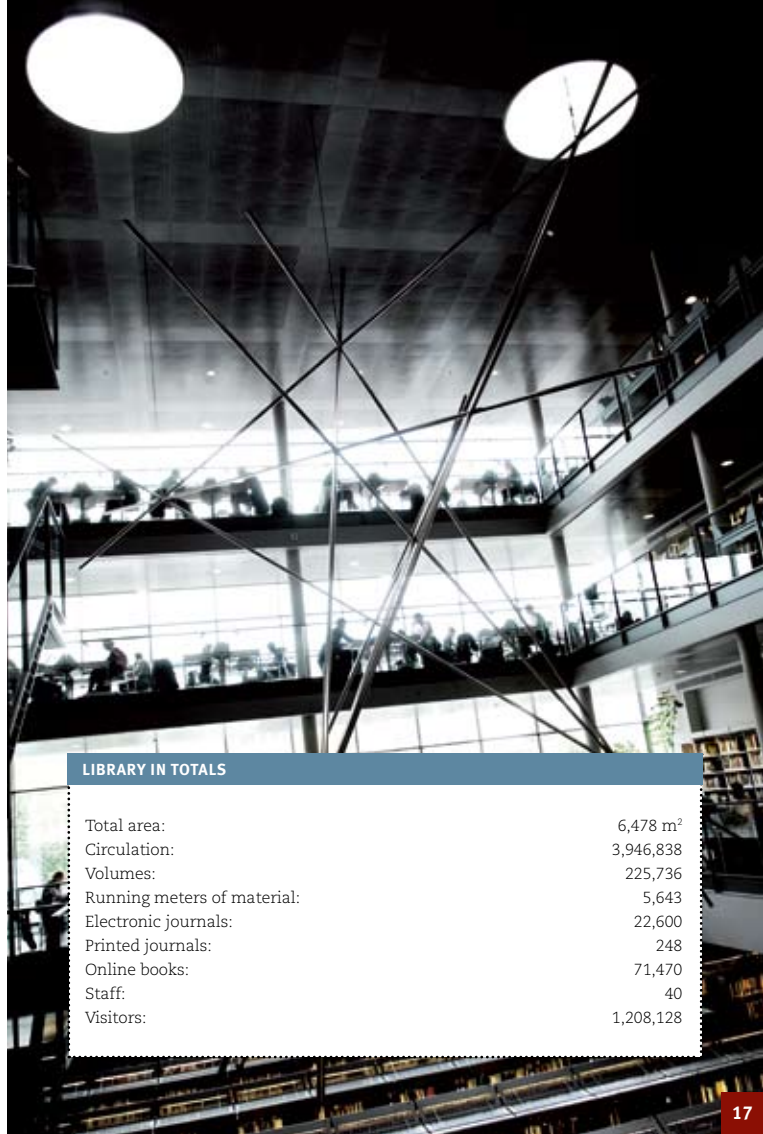
Library



CBS Library is a university library serving scholarly research and educational purposes at Copenhagen Business School. CBS Library's principal obligation is to provide access to printed and electronic information within the fields of business economics, languages, social sciences, law, culture and communication.

Besides the CBS students, faculty and the public, the Library is also used by the business community as well as CBS Alumni. It has locations on the three major campus areas, each with study facilities, collection and network access, on site or online librarian assistance.

In its strategy CBS Library focuses on four major targets: information access, knowledge organisation, support of CBS learning & research processes as well as providing access to CBS research production.



LIBRARY IN TOTALS

Total area:	6,478 m ²
Circulation:	3,946,838
Volumes:	225,736
Running meters of material:	5,643
Electronic journals:	22,600
Printed journals:	248
Online books:	71,470
Staff:	40
Visitors:	1,208,128

CBS Corporate Partners

CBS establishes close ties to a select group of Danish and international companies, providing the Corporate Partners with the possibility to take part in a large diversity of activities with students. Besides connecting with their future employees, the Corporate Partners can play an important societal role in supporting students in their career preparation and generally join knowledge development.

Our Corporate Partners have exclusive access to a variety of opportunities, including counselling and talent attraction activities, activities co-created with other Corporate Partners as well as extensive corporate branding at CBS. As a Corporate Partner you will also find easy access to research and educations through the services of CBS Business Relations.



quartz+co





RANKING

Financial Times:

CBS (Europe)	23
EMBA (World)	47
EMBA (Europe)	21
Master's in Management	22
CEMS MIM	2

Wall Street Journal

Full-time MBA (World)	12
-----------------------	----

Eduniversal:

Europe	2
World	3

Aspen Institute "Beyond Grey Pinstripes":

Full-time MBA (Europe)	8
Full-time MBA (World)	62

UTD Top 100 Business School

Research Rankings:

World:	94
Europe:	6

Webometrics:

Europe	1
World	5

Exchange programmes

CBS strongly focuses on the students' possibility of taking parts of their education at a partner university abroad. At the same time foreign students are an important value-add to the internationalisation of CBS' own study environment. CBS is the Danish member of CEMS - The Global Alliance in Management Education and a member of Partnership

TOTALS

Exchange agreements:	329
Visiting professors:	76
Programmes taught in English:	27
International conferences and workshops:	130

in International Management (PIM), and furthermore focuses on double degree agreements with other top business schools. CBS has exchange and cooperation agreements with 329 universities and business schools around the world, half of which are European.

40% of CBS programmes are taught in English, and CBS offers approx. 200 separate courses taught in English.

INTERNATIONAL STUDENTS 01.10.2010

	From CBS	To CBS - exchange	To CBS - full degree	To CBS Total
Total	1,216	1,233	2,415	3,648
Europe	524	775	2,141	2,916
North America	297	237	38	275
Latin America	70	31	43	74
Asia/Australia	311	184	101	285
Africa/the Middle East	14	6	92	98
International Summer University Program		445		

Facilities

CBS CAMPUS

CBS is primarily located in four modern buildings in Frederiksberg, close to the heart of Copenhagen. Both the main complex at Solbjerg Plads, the architecturally acclaimed building by architect Henning Larsen at Dalgas Have and Kilen (the Wedge), which was inaugurated in the beginning of 2006, reflect the characteristic Scandinavian style.

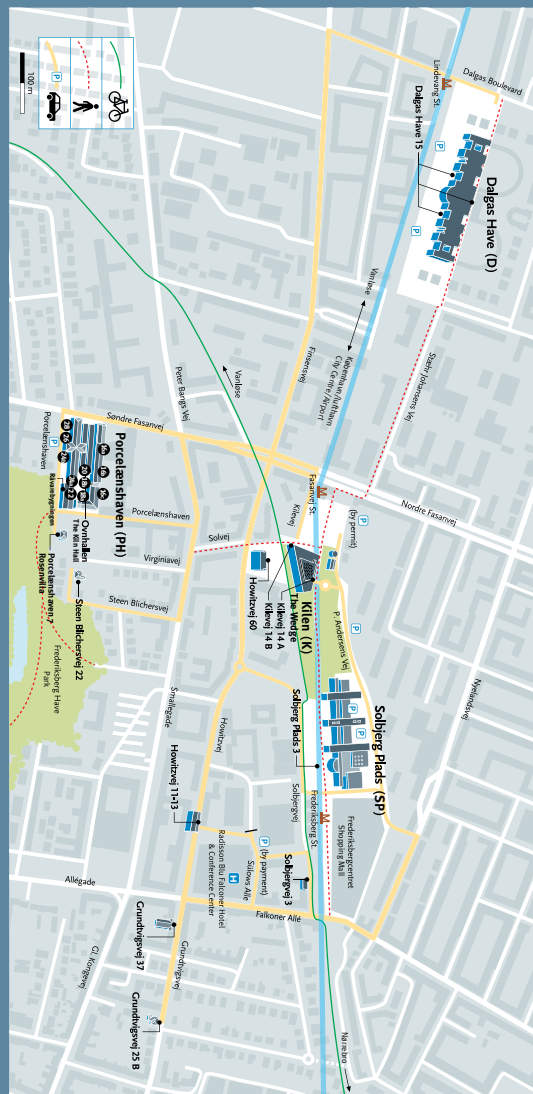
CBS has also rebuilt parts of the former Royal Copenhagen porcelain factory, and all parts of CBS Campus are within walking distance.

CBS offers accommodation for international students and visiting professors.

STUDENT FACILITIES

Student facilities include multimedia labs, interpretation labs, break-out rooms for group and project work, personal computers and Learning Resource Center. Computers are replaced with new models at least every third year. Plugs for portable laptops are readily available, and wireless connections are installed in the main buildings.

Total area in m²: 109,338
600 PCs available for students, multimedia labs,
interpretation labs and Learning Resource Center



Funding

About 73% of CBS' financial foundation is derived from state funding, research grants and grants for education on a performance-based system of resource allocation. CBS strives to increase the external share of research funding. 11% of CBS' income derives from tuition and 16% from external funding.



INCOME (MILLION €)	2010
Government grants directly to CBS	114.6
Government grants applied for against competition	7.9
Grants from private and other non-governmental bodies	6.5
Student tuition	18.5
Other income	12.3
Income, total	159.9

EXPENSES (MILLION €)	2009
Payroll costs	99.0
Rent and real property taxes	12.8
Operation and maintenance of buildings	5.4
Other operating expenses	30.3
Total operating expenses	147.5



Copenhagen

Copper-roofed town houses, world-renowned architecture, timeless design and open air swim baths by the harbour. Copenhagen was founded more than 800 years ago and combines the old-world charm of its medieval origins with the vibrant life of a modern European metropolis.

With 1.9 million inhabitants, the city is human in scale and lively in atmosphere. A network of car-free pedestrian zones and cobbled squares create a liveable and atmospheric downtown area with cafés, cinemas and museums. Home to Europe's longest pedestrian shopping street, Strøget, the city offers great shopping facilities. Since most Danes are fluent in English, you will find it easy to communicate.

INNOVATION ACROSS BORDERS

Copenhagen is located in the heart of the new Øresund Region, which has rapidly become one of the most dynamic Regions in Europe. It is liberally sprinkled with world-class innovative environments and has a well-developed relationship between industry and higher education. 9 universities in Denmark and Sweden – among them CBS – have established the Øresund University in order to encourage the cooperation between research and education across the border.

The high quality public transportation system, consisting of the metro, buses and trains, connects the centre with its suburbs and the airport (a mere 13-minute ride). With the metro, CBS is easily reachable – four minutes from the city centre with three metro stations serving the CBS campus. A direct metro line takes you from Copenhagen Airport to CBS in less than 20 minutes.

Copenhagen Business School
Solbjerg Plads 3
DK-2000 Frederiksberg
Denmark

tel: +45 3815 3815
fax: +45 3815 2015
e-mail: cbs@cbs.dk
www.cbs.dk

