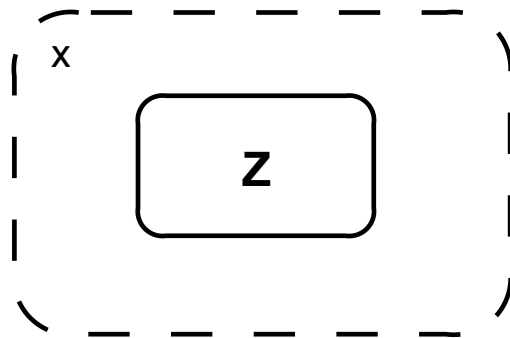


Ontology for linguistics

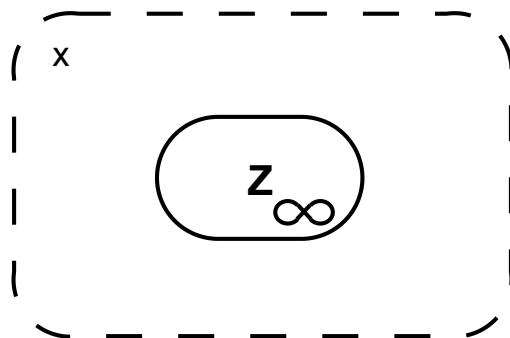
- terms and categories used for linguistic description and analysis
- => building blocks for linguistic description and analysis
- which concepts are prominent enough in a linguistic community to be included?
 - which conceptual distinctions show up in the description of linguistic phenomena?

Aktionsarten: case study questions

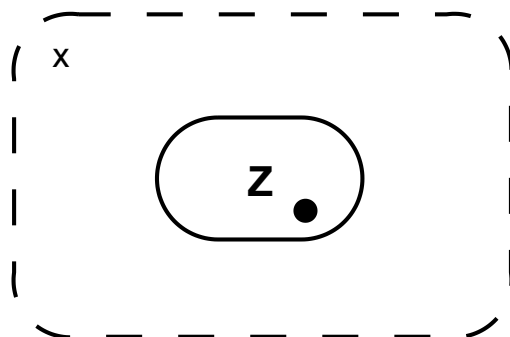
- Which of the example sentences belong to the same Aktionsarten-class (if any)?
- Which criteria did you use for your classification?
- What does your ontology look like?
- What type of ontology is it?



State

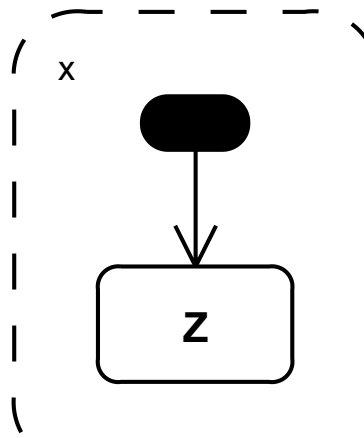


Activity

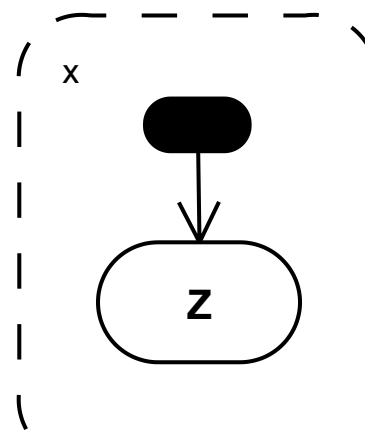


Act

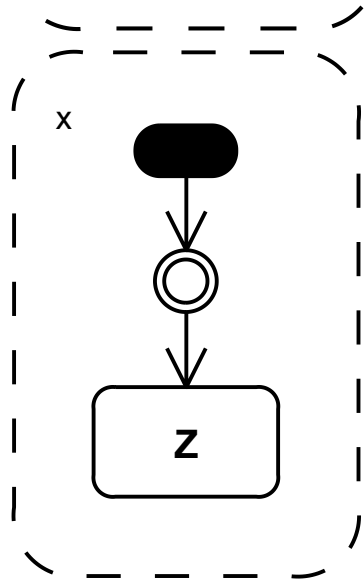
Achievement



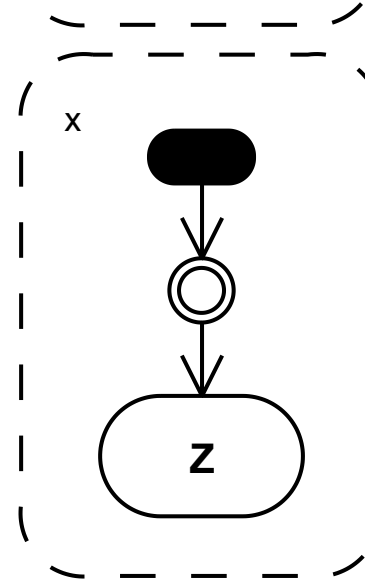
Ingressive



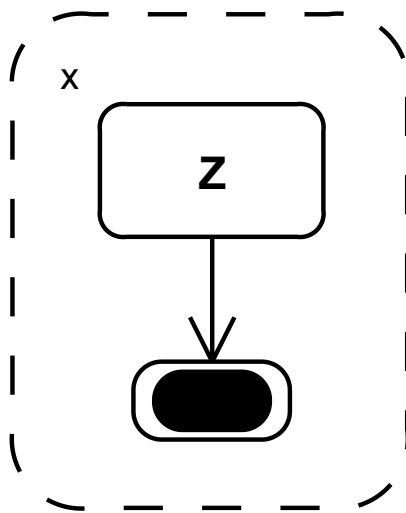
Alterative



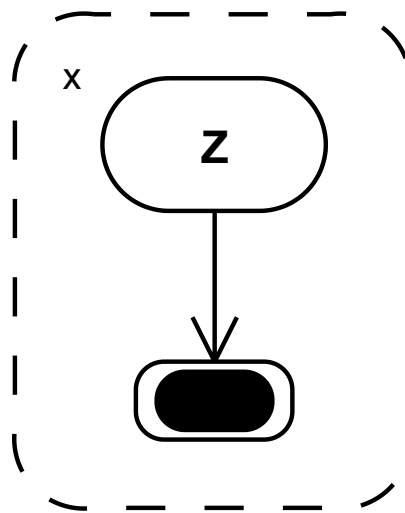
Inchoative



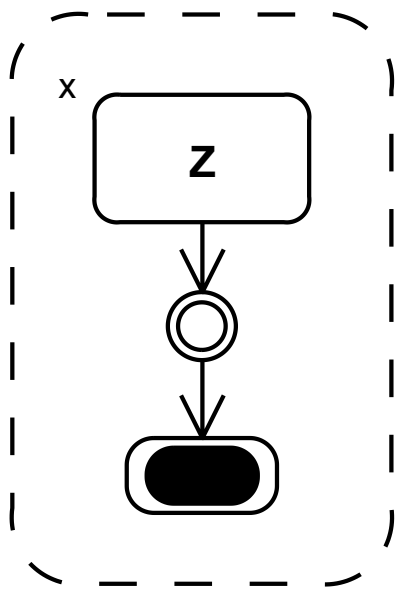
Terminative



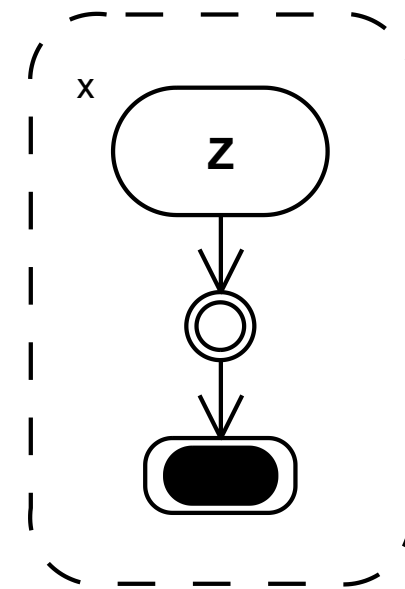
Egressive



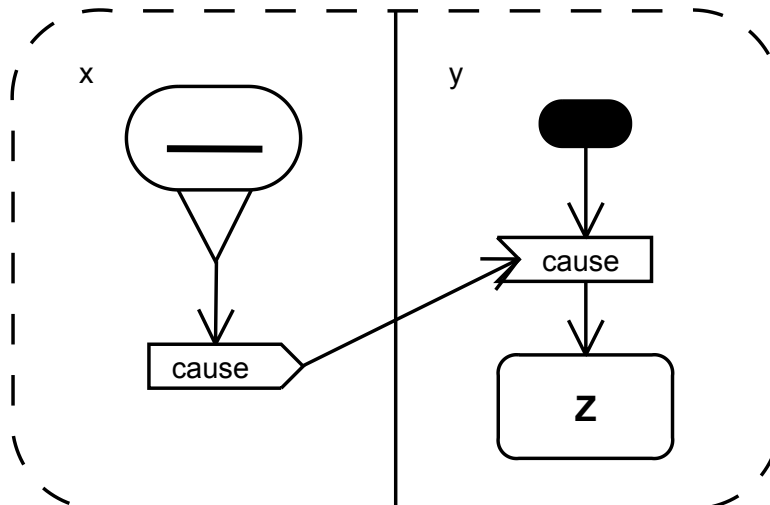
Desitive



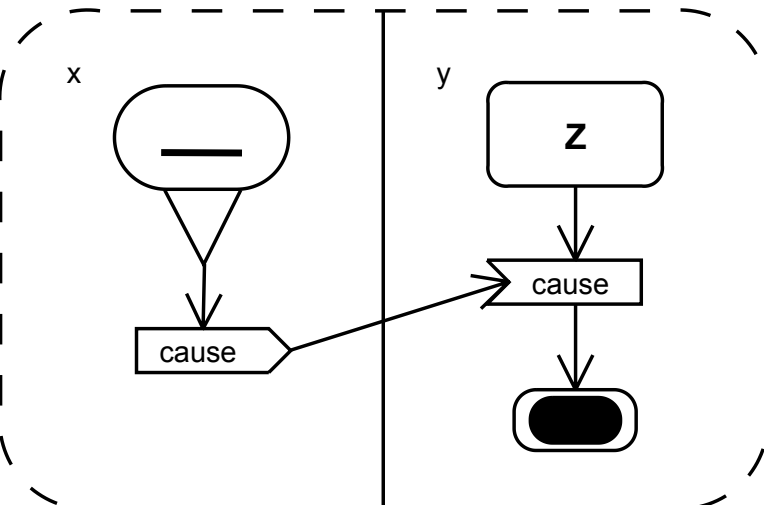
Conclusive



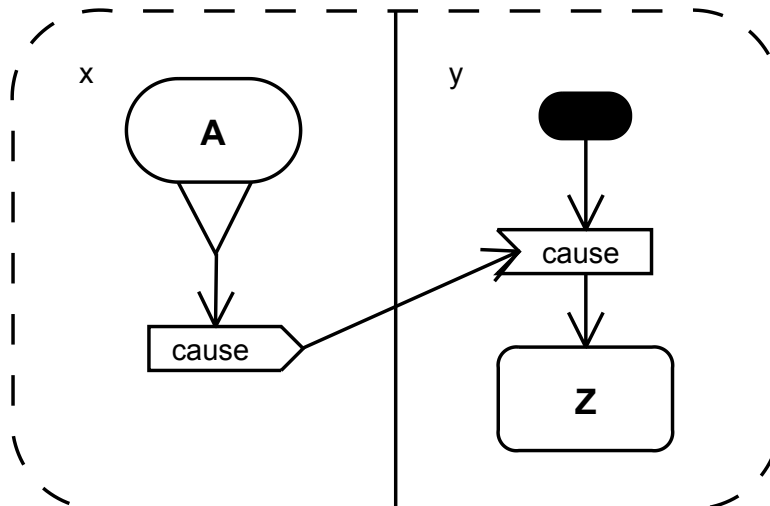
Causative



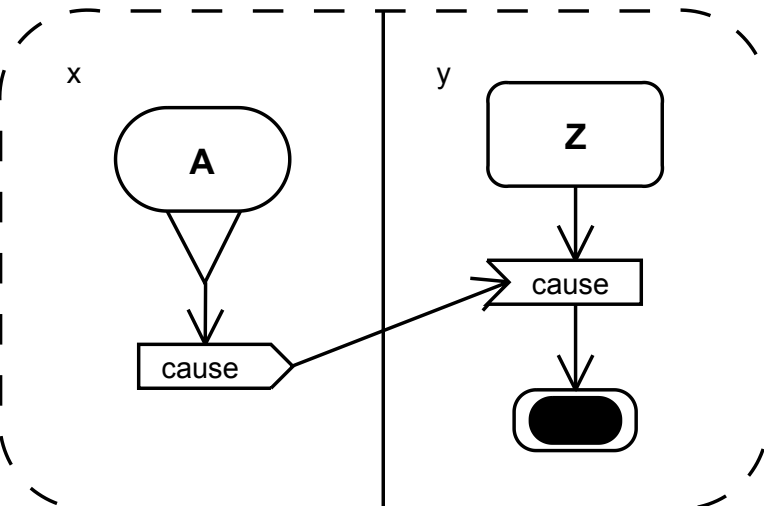
Deducive



Resultative

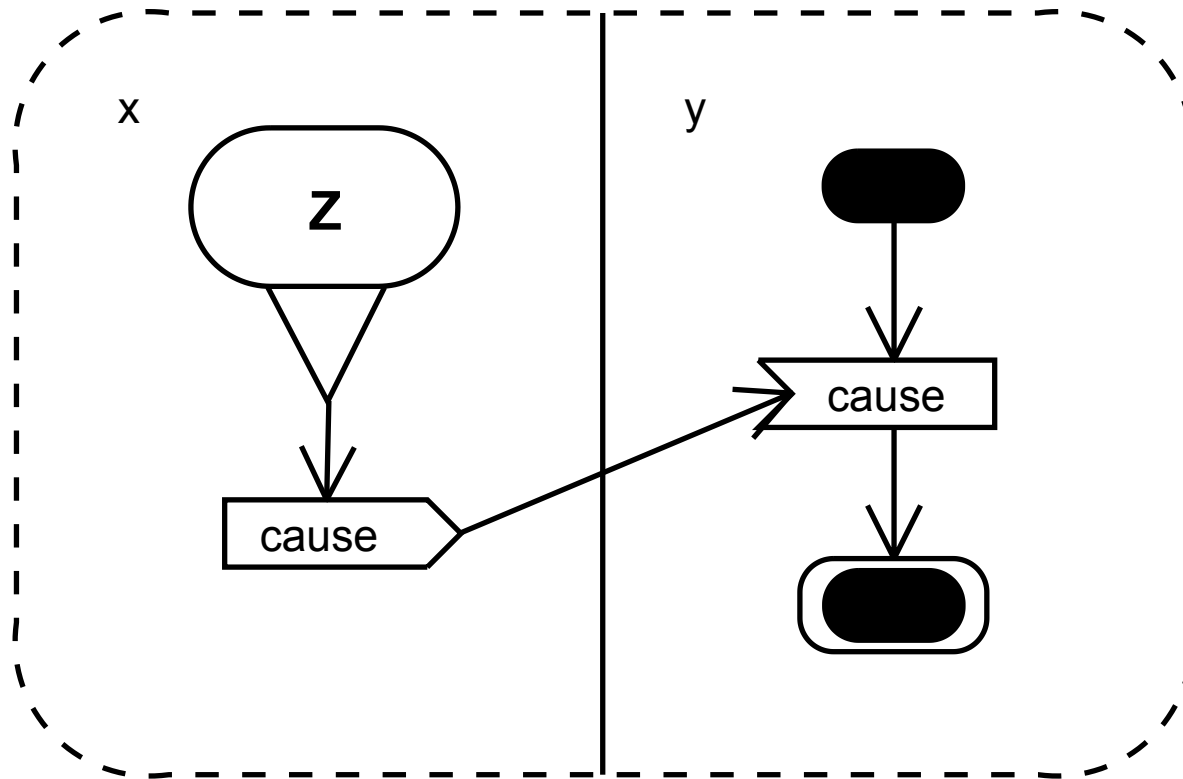


Expulsive



Aktionsarten ontology (a start at least)

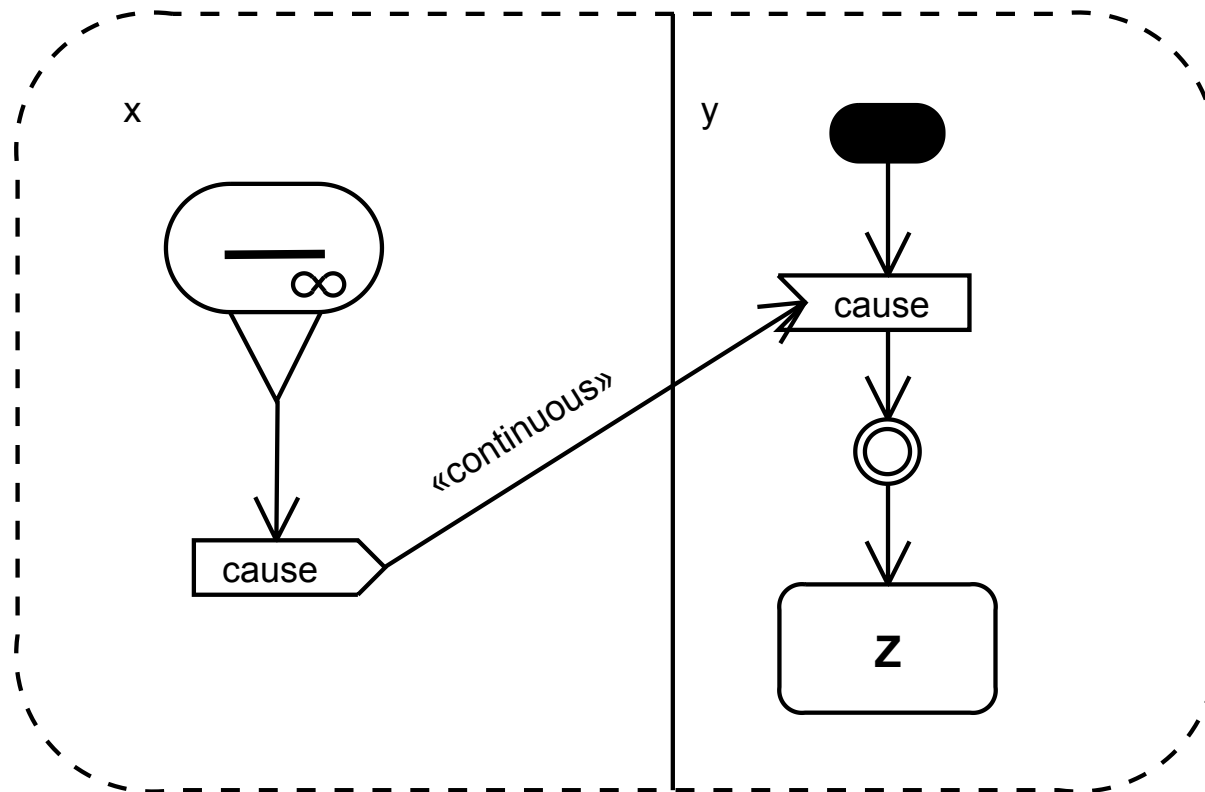




Factive

I swept the floor.

He lowered the newspaper.



Continuous causative

Ontology for linguistics

- a set of building blocks and rules used to describe and analyse language and linguistic phenomena
- ontology for linguistics
 - facilitates the discovery of conflicting terminology and development of overarching terminology
 - builds foundation for representation and overview of linguistic design resources

Ontology for linguistics

- authored by linguists (e.g. GOLD – General Ontology for Linguistic Description, cf. Farrar 2007)
- used by
 - linguists
 - computer scientists
 - language teachers
- evolves with the progress in linguistic theorising
- relevant criteria:
 - adequateness
 - usefulness

Are they related? How are they related?

LANGUAGE ONTOLOGY – ONTOLOGY FOR LINGUISTICS

Comparison

a meta-model is an explicit model of the constructs and rules needed to build specific models within a domain of interest (www.metamodel.com)

Language ontology

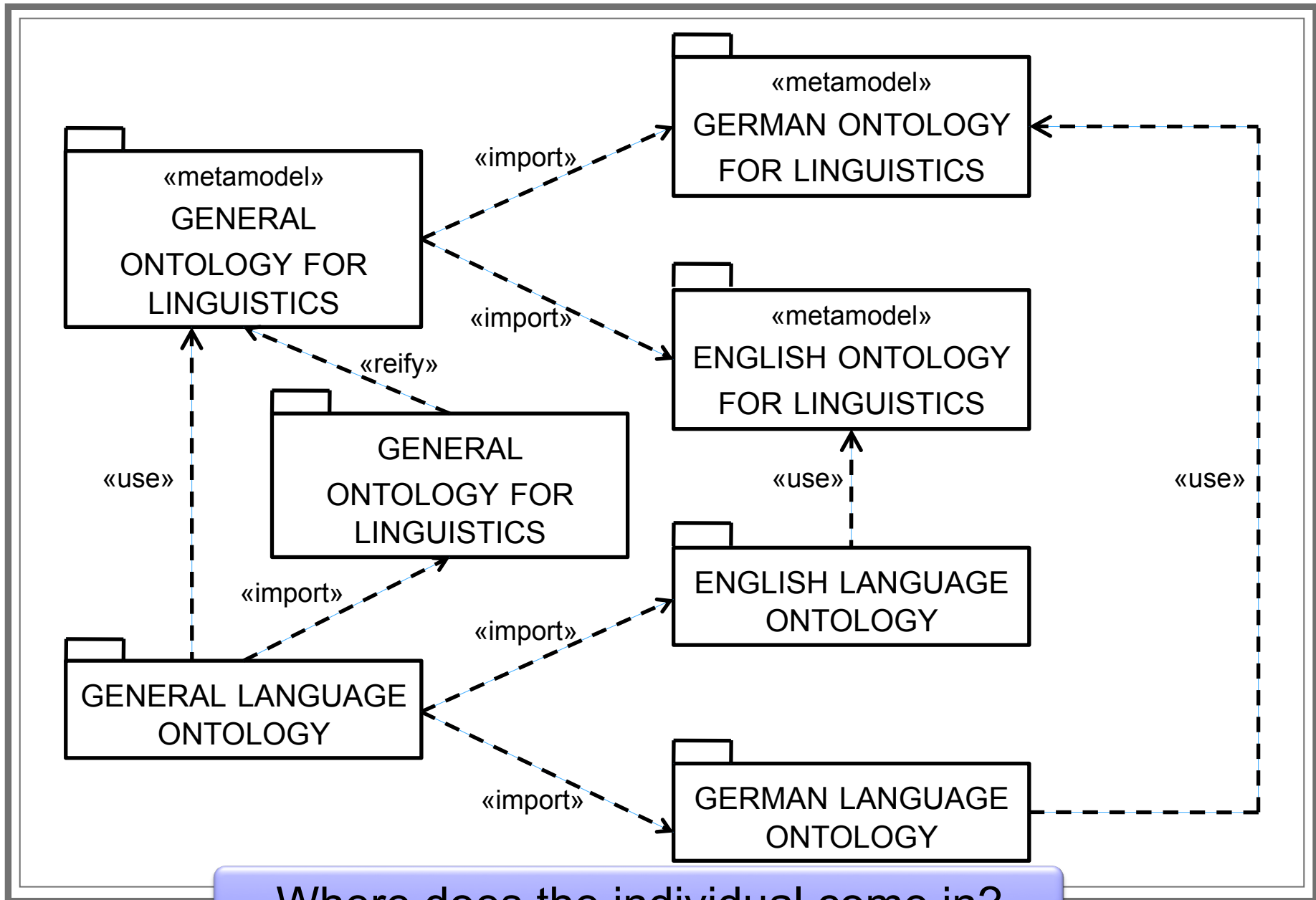
- concepts underlying and being coded by linguistic signs
- representation, i.e. model, of these concepts and their network

includes language ontology for the language that is used to describe linguistic phenomena: meta-language ontology

Ontology for linguistics

- terms and categories used for linguistic description and analysis
- building blocks for precise linguistic description and analysis and their network (hierarchy)

cf. Unified Modeling Language (UML) model vs. metamodel



Where does the individual come in?

Where does the lexicon come in?

OUTLOOK

Future work

- systematic, cross-linguistic approach to one particular field to see what ontology-driven approach can deliver wrt:
 - systematicity and inventory development
 - terminology support
 - knowledge about language ontologies

Categories of social cognition
and their grammaticalisation

References

- Aikhenvald, Alexandra Y. 2000. *Classifiers: A Typology of Noun Categorization Devices*. (Oxford Studies in Typology and Linguistic Theory.) Oxford: Oxford University Press.
- Apresjan, Jurij D. 1974. Regular polysemy. *Linguistics. An International Review* 142: 5–32.
- Crowley, Terry 1998. *An Erromangan (Sye) Grammar*. Oceanic linguistics special publication no. 27. Honolulu: University of Hawaii Press.
- Dowty, David R. 1979. *Word Meaning and Montague Grammar: The semantics of verbs and times in generative semantics and Montague's PTQ*. Dordrecht/Boston/London: Kluwer Academic Publishers.
- Evans, Nicholas 2003. Context, culture and structuration in the languages of Australia. *Annual Review of Anthropology* 32: 13-40.
- Evans, Nicholas 2008. Grammar and psychosocial cognition: What linguistic diversity can tell us about social cognition. Kioloa Project Retreat Presentation, May 2008.
- Farrar, Scott. 2007. Using 'Ontolinguistics' for language description. In Andrea C. Schalley & Dietmar Zaefferer (eds.), *Ontolinguistics. How Ontological Status Shapes the Linguistic Coding of Concepts*. Berlin/New York: Mouton de Gruyter, 175–191.
- Goddard, Cliff 2005. *The Languages of East and Southeast Asia: An Introduction*. Oxford: Oxford University Press.
- Gruber, Thomas R. 1993. A translation approach to portable ontology specification. *Knowledge Acquisition* 5: 199–220.

References

- Gruber, Thomas R. 2008. Ontology. To appear in Ling Liu & M. Tamer Özsu (eds.), *Encyclopedia of Database Systems*. Berlin: Springer. <http://tomgruber.org/writing/ontology-definition-2007.htm>.
- Nickles, Matthias, Adam Pease, Andrea C. Schalley & Dietmar Zaefferer 2007. Ontologies across disciplines. In Andrea C. Schalley & Dietmar Zaefferer (eds.), *Ontolinguistics. How Ontological Status Shapes the Linguistic Coding of Concepts*. Berlin/New York: Mouton de Gruyter, 23–67.
- Schalley, Andrea C. 2004. *Cognitive Modeling and Verbal Semantics. A Representational Framework Based on UML*. (Trends in Linguistics. Studies and Monographs 154.) Berlin/New York: Mouton de Gruyter.
- Schalley, Andrea C & Dietmar Zaefferer 2007. Ontolinguistics – An outline. In Andrea C. Schalley & Dietmar Zaefferer (eds.), *Ontolinguistics. How Ontological Status Shapes the Linguistic Coding of Concepts*. Berlin/New York: Mouton de Gruyter, 3-22.
- Talmy, Leonard 1985. Lexicalization patterns: semantic structure in lexical forms. In Timothy Shopen (ed.), *Language Typology and Syntactic Description: Grammatical Categories and the Lexicon*. Cambridge: Cambridge University Press, 57–149.
- Zaefferer, Dietmar 2007. Language as mind sharing device: Mental and linguistic concepts in a general ontology of everyday life. In Andrea C. Schalley & Dietmar Zaefferer (eds.), *Ontolinguistics. How Ontological Status Shapes the Linguistic Coding of Concepts*. Berlin/New York: Mouton de Gruyter, 193–227.